



WONDER & WHIMSY

*Wonder & Whimsy*

# Before You Go

A wooden boardwalk path leads through tall, dry grass under a cloudy sky. The path is made of dark wooden planks and stretches into the distance. The grass is tall and golden-brown, and the sky is filled with soft, grey clouds. A large red quotation mark is positioned at the top left of the image.

“

So many beautiful  
sights to see,  
amazing places to  
eat, and fun  
surprises to explore!

-GUESS WHERE TRIPPER



# How does a surprise road trip work?



## Pick a Date

We recommend doing the trip within **6 months** of receiving this road trip. Pay close attention to the 'When To Go' within the 'Navigating the Road' section of this booklet.



## Get Ready

The only requirement is having a vehicle, GPS and a driver. The trip is completely **self-guided**, so nothing needs to be booked in advance.



## Check Updates

Before leaving, please check **travel updates** on our website. This will provide you with any major changes to the itinerary.



## Pack Your Bag

Please refer to the '**What to Pack**' list in this booklet for items we recommend bringing with you.

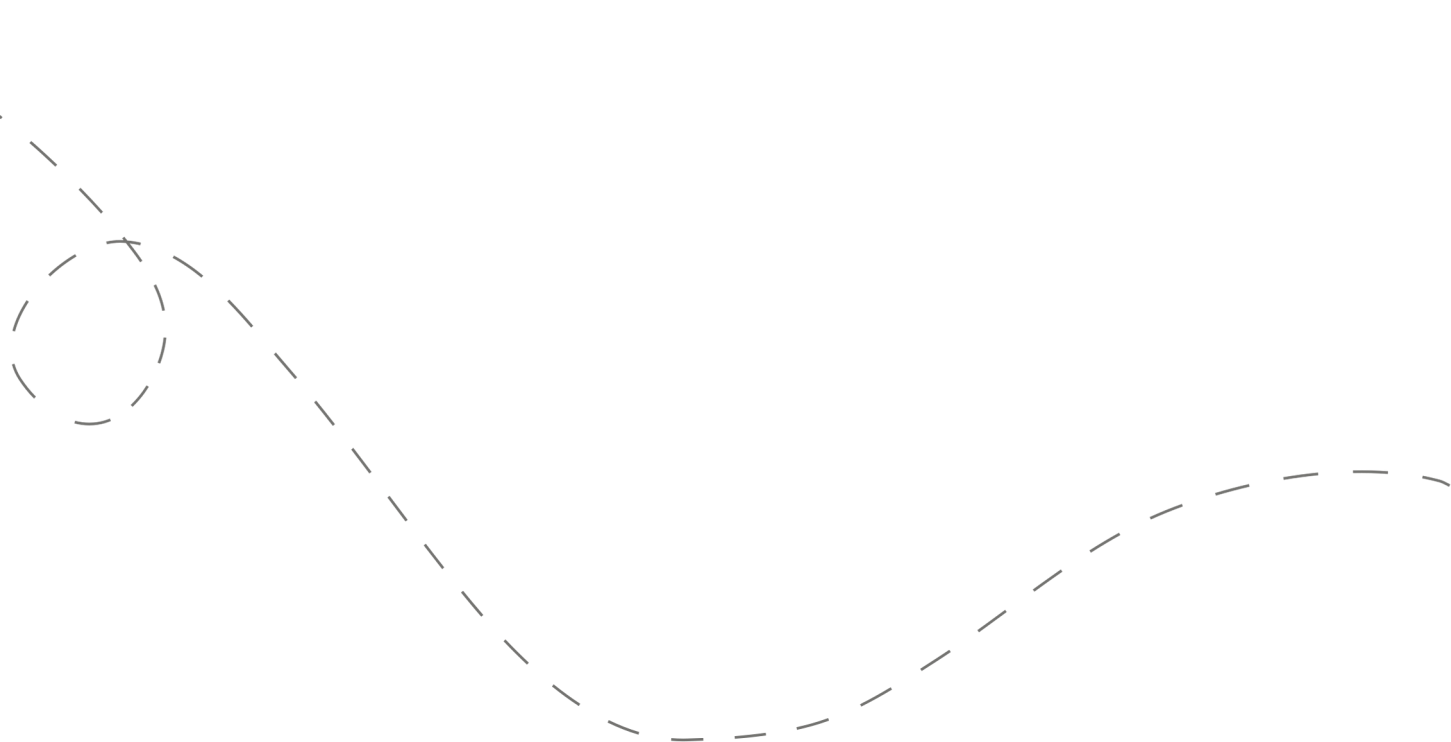


## Hit the Road!

Don't open the first envelope until you're ready to leave. Once you're finished at the first stop, you can open the second envelope. Four stops are included within your road trip.

# Your day ahead! Without giving away too many details.

We often include a variety of recommendations at each stop. You do not have to go to all of them, pick and choose what works best for you and your travel mates. If you can't get through all of the stops during the day - come back and explore them at a later date!





## DETAILED ITINERARY



### Time to Depart!

We recommend departing **between 9:00 - 9:30 am if you're coming from Dallas or Waco**. Depart at 10 am if you're coming from Fort Worth. The later you leave, the less time you'll have to explore all of the stops.

1

### Boardwalk Bliss

Recommended duration: 30 - 45 minutes

Drive time to second stop: 20 minutes

2

### Funky Florals

Recommended duration: 1 - 1.5 hours

Drive time to third stop: 20 minutes

*\*Multiple food options are available at this stop.*

3

### Pick Your Park

Recommended duration: 1 hour

Drive time to fourth stop: 12 minutes

4

### A Crazy Ending!

Recommended duration: 1 - 2 hours

Our featured stop closes at 6pm (Mon. - Sat.) and 5pm on Sundays.

*\*Multiple food options are available at this stop.*

# Navigating the Road



## When to Go

- ✓ This trip is best done **Tuesday - Sunday, any time of year.**
- ✓ A few options on stop #2 are closed Sundays. We do not recommend traveling on Mondays or holidays.



## Stay Overnight

Head to the following link for a list of recommended accommodations close to the last stop.

**[guesswheretrips.com/pages/hotels](https://guesswheretrips.com/pages/hotels)**

*\*The link above will only reveal the general area of where your trip will end.*



## Itinerary Changes

Descriptions, dates and hours may have changed since publishing the itinerary. Find out if changes have been made to your trip by heading to:

**[guesswheretrips.com/updates](https://guesswheretrips.com/updates)**

Tip: Scan below for the most updated trip!



## Get the Digital Version

Every road trip package includes a QR code that you can scan to get the full digital version of the trip. This is a great option if you are traveling with a group of people in multiple cars!





## What to Pack:

- ☐ A vehicle with a full tank of gas
- ☐ **Comfortable walking footwear**
- ☐ Weather-appropriate clothing
- ☐ Sunscreen & bug spray
- ☐ Reusable shopping bags
- ☐ **Small shovel and bucket**  
(optional suggestion on stop #4)
- ☐ Some form of GPS device  
(ie. Google Maps)
- ☐ Road trip snacks
- ☐ Wallet (~\$15 pp in cash/coins  
may be required)
- ☐ Your Guess Where Trips package
- ☐ Don't forget road trip music! Head  
to GWT's road trip playlist on  
Spotify here:



## Questions?

If you have any questions before your trip, please check out the FAQs on our website. If you can't find the answer to your question, please send us an email at [questions@guesswheretrips.com](mailto:questions@guesswheretrips.com).

**Please note:** We are out of the office over the weekend.



## Land Acknowledgement

We recognize that some of the stops listed in this trip date back to a time when not everyone was free. These places also exist on the traditional and ancestral territories of Indigenous peoples who have stewarded this land for generations.

As we acknowledge both the history of slavery and the impact of colonization, we recognize the profound inequalities and systemic racism these legacies have bred. These horrific institutions dehumanized millions and displaced countless Indigenous peoples, leaving lasting social, economic, and cultural consequences. Confronting these truths allows us to reflect, foster dialogue, and work towards a more just society. As you travel, we encourage you to inquire about this history, ask sites to prominently display their history and honor the Indigenous lands on which they stand, ensuring these histories are neither overlooked nor diminished.



# Frequently Asked Questions

## How much will the stops cost?

**First Stop:** No fee

**Second Stop:** Our featured stop requires an entrance fee of \$5 per person. We've provided a few free alternatives.

**Third Stop:** Two options require entrance fees (\$5-10). We've provided one free alternative.

**Fourth Stop:** No fee

*\*Please note: gas, tolls, and food are additional costs at your own expense.*

## When should we leave?

We recommend departing **between 9:00 - 9:30 am if you're coming from Dallas or Waco**. Depart at 10 am if you're coming from Fort Worth. The later you leave, the less time you'll have to explore all of the stops.

## Can I bring my dog?

This trip is **somewhat pet friendly!** On every stop there will be at least one option that allows dogs; however, you will be limited to our outdoor options and eateries with patios. We recommend coordinating with the weather if you're bringing your furry friend.



## How long will the total trip take?

See the approximate **round-trip driving distances/times** below. These are driving distances only and do not factor in time spent at stops.

### From **Fort Worth, TX:**

2 hours and 15 minutes / 106 miles

### From **Dallas, TX:**

3 hours and 9 minutes / 169 miles

### From **Waco, TX\*:**

4 hours and 36 minutes / 272 miles

*\*We recommend booking an overnight hotel if the driving distance is greater than 4 hours round-trip.*

## How many people can I bring with me?

We recommended **bringing up to 5 people** on your surprise road trip.

If you're bringing a larger group, we highly recommend having one person in charge of booking reservations at restaurants and attractions in advance. Please see the previous page for a copy of the digital itinerary.

## Is this wheelchair or stroller accessible?

**First Stop:** This stop is somewhat accessible.

**Second Stop:** There are multiple accessible options at this stop.

**Third Stop:** One trail option is not accessible. Two other options are only somewhat accessible.

**Fourth Stop:** There are multiple accessible options at this stop.

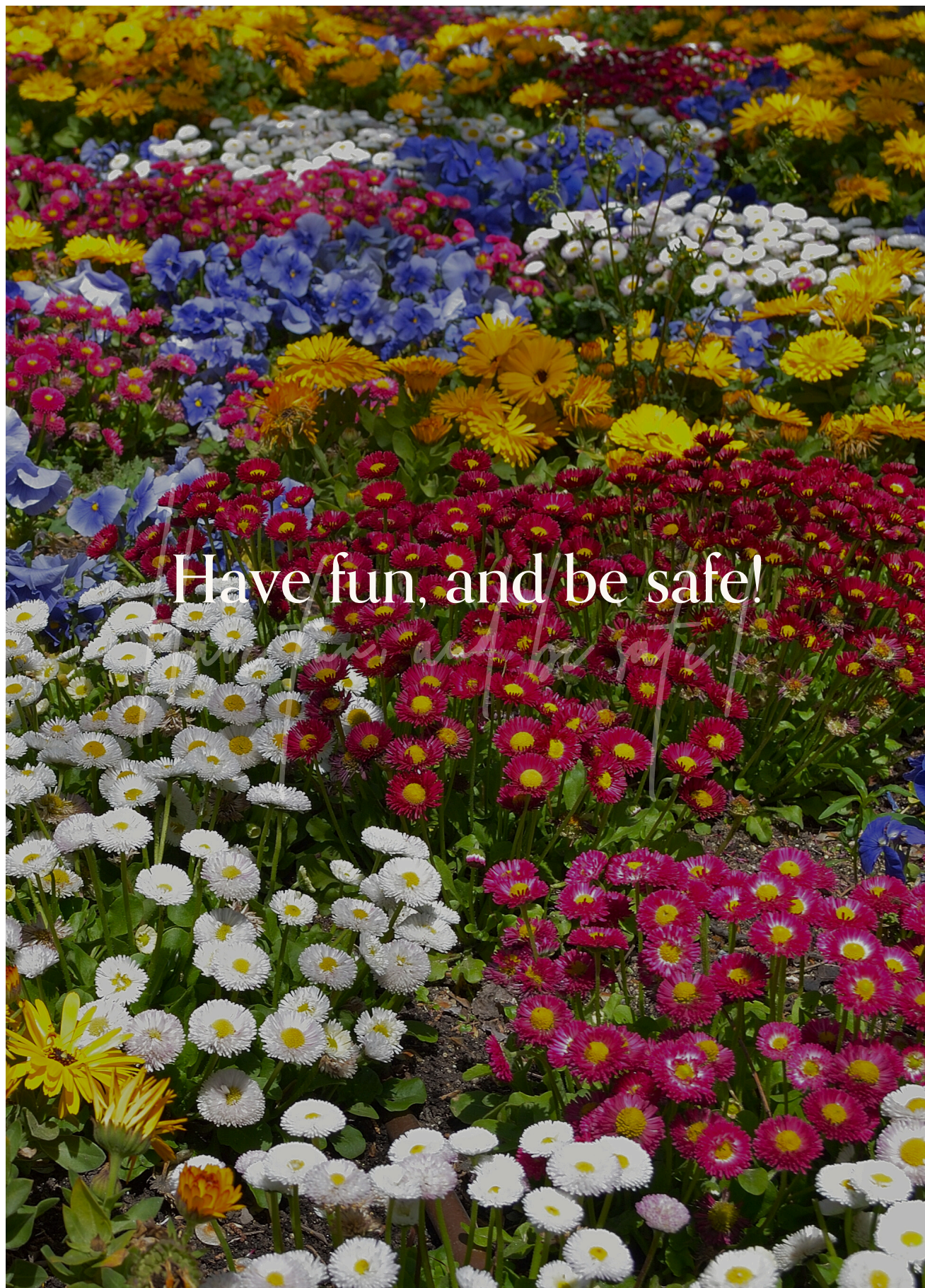
# Risk

Get out on the road and have fun, but please be careful. Obey all road signs, never drink and drive, and use caution and common sense at all times. The risk of injury can be significant, including the potential for permanent disability and death. While particular precautions and personal discipline will minimize this risk, the risk of personal and emotional injury, illness, physical disability, or death does exist. Guess Where Trips Inc., its owners, officers, publishers, and agents assume NO liability for your actions or activities as a result of recommendations within this guide. You agree and acknowledge that you will do some, or all, of the recommendations suggested in this book with full and complete knowledge of the risk and dangers involved, and you agree to accept and assume any and all risks of any nature whatsoever.

More information is available on our website at [www.guesswheretrips.com](http://www.guesswheretrips.com).

The Guess Where Trips Team









## Redefining Road Trips

Copyright © 2026 Guess Where Trips Inc.®

---

 Share Your Trip With Us @guesswheretrips | #guesswheretrips

---