



PRETTY LITTLE FINDS

# Before You Go





“

I received this trip  
as a birthday gift,  
and it has been one  
of the best gifts I  
have ever received!

-GUESS WHERE TRIPPER



# How does a surprise road trip work?



## Pick a Date

We recommend doing the trip within **6 months** of receiving this road trip. Pay close attention to the 'When To Go' within the 'Navigating the Road' section of this booklet.



## Get Ready

The only requirement is having a vehicle, GPS and a driver. The trip is completely **self-guided**, so nothing needs to be booked in advance.



## Check Updates

Before leaving, please check **travel updates** on our website. This will provide you with any major changes to the itinerary.



## Pack Your Bag

Please refer to the '**What to Pack**' list in this booklet for items we recommend bringing with you.

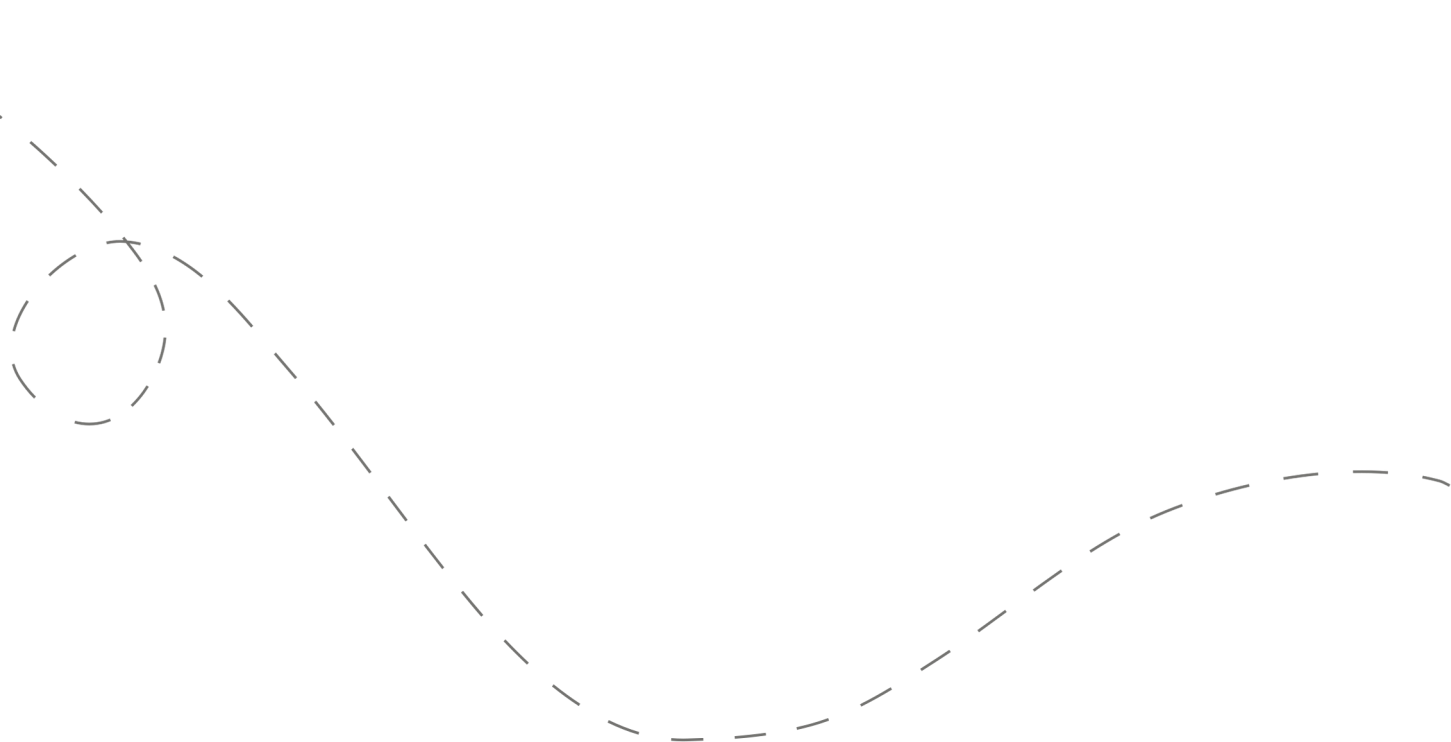


## Hit the Road!

Don't open the first envelope until you're ready to leave. Once you're finished at the first stop, you can open the second envelope. Four stops are included within your road trip.

# Your day ahead! Without giving away too many details.

We often include a variety of recommendations at each stop. You do not have to go to all of them, pick and choose what works best for you and your travel mates. If you can't get through all of the stops during the day - come back and explore them at a later date!





## DETAILED ITINERARY



### Time to Depart!

We recommend departing **between 8:00 - 8:30 am** if you're coming from Austin, San Antonio or Houston. The later you leave, the less time you'll have to explore all of the stops.

1

### Beautiful Botanicals

Recommended duration: 45 minutes - 1 hour

Drive time to second stop: 8 minutes

*\*Light food options are available at this stop.*

2

### Fill Your Camera Roll

Recommended duration: 1 hour

Drive time to third stop: 20 minutes

3

### Brews, Barns or Bees?

Recommended duration: 1 hour

Drive time to fourth stop: 15 - 30 minutes

*\*One farm market and one winery available at this stop.*

4

### Antique Adventures

Recommended duration: 2 hours

Note that many shops on this stop close around 5pm.

*\*Multiple food options are available at this stop.*

# Navigating the Road



## When to Go

- ✓ This trip is **best done Thursday - Saturday, year round.**
- ✓ We do not recommend travelling between Sunday - Wednesday or on holidays. This area also has two huge antique shows every year (late March & early October) which make traffic here extremely busy!



## Stay Overnight

Head to the following link for a list of recommended accommodations close to the last stop.

**[guesswheretrips.com/pages/hotels](https://www.guesswheretrips.com/pages/hotels)**

*\*The link above will only reveal the general area of where your trip will end.*



## Itinerary Changes

Descriptions, dates and hours may have changed since publishing the itinerary. Find out if changes have been made to your trip by heading to:

**[guesswheretrips.com/updates](https://www.guesswheretrips.com/updates)**

Tip: Scan below for the most updated trip!



## Get the Digital Version

Every road trip package includes a QR code that you can scan to get the full digital version of the trip. This is a great option if you are traveling with a group of people in multiple cars!





## What to Pack:

- ☐ A vehicle with a full tank of gas
- ☐ Comfortable walking footwear
- ☐ Weather-appropriate clothing / warm layers for winter
- ☐ Sunscreen & bug spray
- ☐ **Reusable shopping bags**
- ☐ Some form of GPS device (ie. Google Maps)
- ☐ Road trip snacks
- ☐ Wallet (~\$20 in cash/coins may be required)
- ☐ Your Guess Where Trips package
- ☐ Don't forget road trip music! Head to GWT's road trip playlist on Spotify here:



## Questions?

If you have any questions before your trip, please check out the FAQs on our website. If you can't find the answer to your question, please send us an email at [questions@guesswheretrips.com](mailto:questions@guesswheretrips.com).

**Please note:** We are out of the office over the weekend.



## Land Acknowledgement

We recognize that some of the stops listed in this trip date back to a time when not everyone was free. These places also exist on the traditional and ancestral territories of Indigenous peoples who have stewarded this land for generations.

As we acknowledge both the history of slavery and the impact of colonization, we recognize the profound inequalities and systemic racism these legacies have bred. These horrific institutions dehumanized millions and displaced countless Indigenous peoples, leaving lasting social, economic, and cultural consequences. Confronting these truths allows us to reflect, foster dialogue, and work towards a more just society. As you travel, we encourage you to inquire about this history, ask sites to prominently display their history and honor the Indigenous lands on which they stand, ensuring these histories are neither overlooked nor diminished.



# Frequently Asked Questions

## How much will the stops cost?

**First Stop:** No fee

**Second Stop:** No fee

**Third Stop:** Our featured stop requires a small entrance fee per person (\$). One farm stop offers optional self-guided tours for a fee (\$). We've provided one free alternative.

**Fourth Stop:** No fee

*\*Please note: gas, tolls, and food are additional costs at your own expense.*

## When should we leave?

We recommend departing **between 8:00 - 8:30 am** if you're coming from Austin, San Antonio or Houston. The later you leave, the less time you'll have to explore all of the stops.

Please note that many of our shop suggestions on stop #4 close around 5pm, so please plan your time accordingly.

## Can I bring my dog?

This trip is **somewhat pet-friendly!** There will be at least one dog-friendly option on every stop. However, note that our shop and eatery suggestions only allow dogs on outdoor patios, so we recommend coordinating with the weather.



## How long will the total trip take?

See the approximate **round-trip driving distances/times** below. These are driving distances only and do not factor in time spent at stops.

From **Austin, TX:**

3 hours and 55 minutes / 210 miles

From **Houston, TX:**

4 hours / 242 miles

From **San Antonio, TX\*:**

4 hours and 50 minutes / 278 miles

From **San Marcos\*:**

4 hours and 6 minutes / 210 miles

*\*We recommend booking an overnight hotel if the driving distance is greater than 4 hours round-trip.*

## How many people can I bring with me?

We recommended **bringing up to 5 people** on your surprise road trip.

If you're bringing a larger group, we highly recommend having one person in charge of booking reservations at restaurants and attractions in advance. Please see the previous page for a copy of the digital itinerary.

## Is this wheelchair or stroller accessible?

**First Stop:** There are multiple accessible options at this stop.

**Second Stop:** This stop is somewhat accessible.

**Third Stop:** One historic trail is not accessible and one farm stop is somewhat accessible. We've provided an accessible winery option.

**Fourth Stop:** There are multiple accessible options at this stop.

# Risk

Get out on the road and have fun, but please be careful. Obey all road signs, never drink and drive, and use caution and common sense at all times. The risk of injury can be significant, including the potential for permanent disability and death. While particular precautions and personal discipline will minimize this risk, the risk of personal and emotional injury, illness, physical disability, or death does exist. Guess Where Trips Inc., its owners, officers, publishers, and agents assume NO liability for your actions or activities as a result of recommendations within this guide. You agree and acknowledge that you will do some, or all, of the recommendations suggested in this book with full and complete knowledge of the risk and dangers involved, and you agree to accept and assume any and all risks of any nature whatsoever.

More information is available on our website at [www.guesswheretrips.com](http://www.guesswheretrips.com).

The Guess Where Trips Team



A photograph of a park scene. On the left, a large, thick tree trunk with rough bark stands prominently. In the foreground, a bush of bright yellow flowers is in bloom. The background features a green lawn, a stone monument with a statue, and more trees under a clear blue sky. The text "Have fun, and be safe!" is overlaid in the center.

Have fun, and be safe!





## Redefining Road Trips

Copyright © 2026 Guess Where Trips Inc.®

---

 Share Your Trip With Us @guesswheretrips | #guesswheretrips

---