



JOSHUA TREE JOURNEY

# Before You Go

A desert landscape at sunset. The sun is low on the horizon, creating a warm orange glow. Several Joshua trees are visible, with one prominent one on the right side. The sky is a mix of blue and orange. The ground is sandy with some dry grass and small shrubs.

“

GWT made this  
iconic route way  
more fun. We  
found so many  
cute hidden gems  
and views I didn't  
know existed.

-GUESS WHERE TRIPPER

# How does a surprise road trip work?



## Pick a Date

We recommend doing the trip within **6 months** of receiving this road trip. Pay close attention to the 'When To Go' within the 'Navigating the Road' section of this booklet.



## Get Ready

The only requirement is having a vehicle, GPS and a driver. The trip is completely **self-guided**, so nothing needs to be booked in advance.



## Check Updates

Before leaving, please check **travel updates** on our website. This will provide you with any major changes to the itinerary.



## Pack Your Bag

Please refer to the '**What to Pack**' list in this booklet for items we recommend bringing with you.

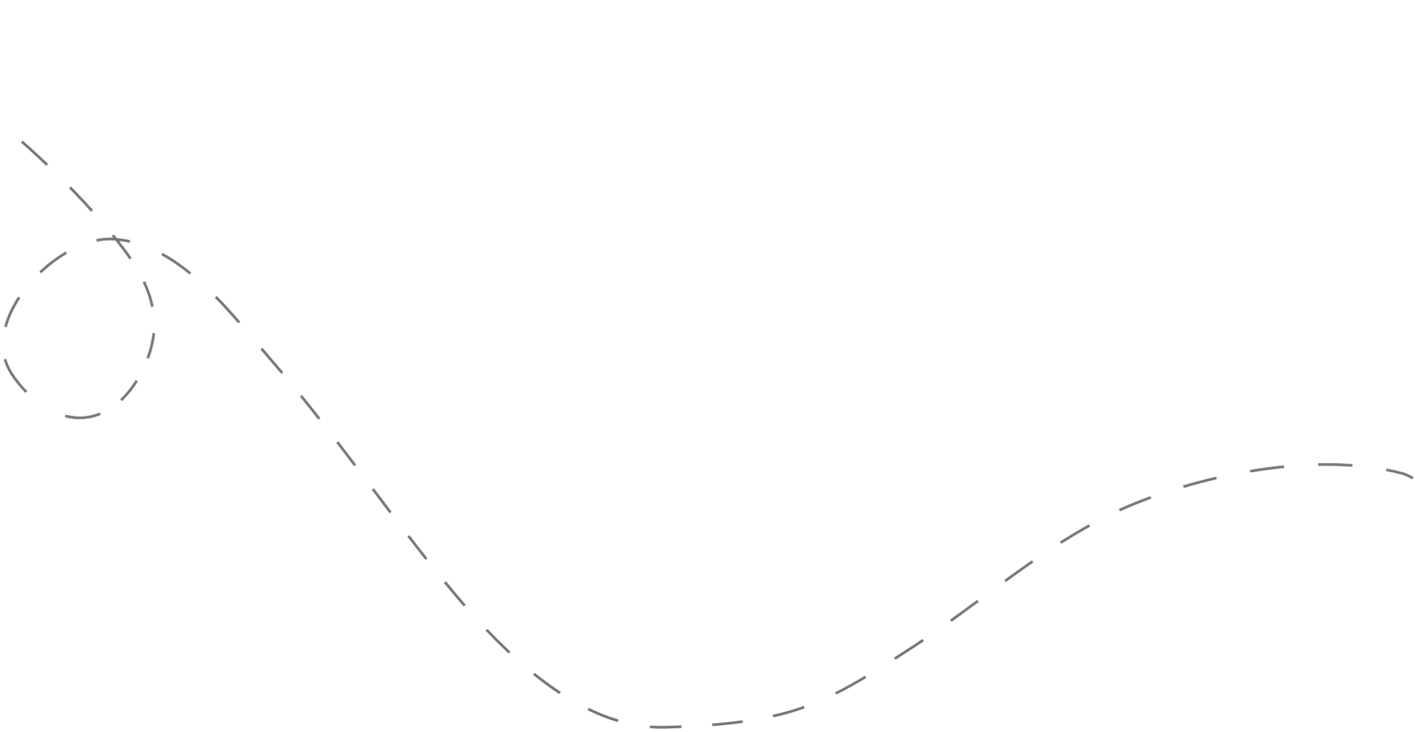


## Hit the Road!

Don't open the first envelope until you're ready to leave. Once you're finished at the first stop, you can open the second envelope. Four stops are included within your road trip.

# Your day ahead! Without giving away too many details.

We often include a variety of recommendations at each stop. You do not have to go to all of them, pick and choose what works best for you and your travel mates. If you can't get through all of the stops during the day - come back and explore them at a later date!



# DETAILED ITINERARY



## Time to Depart!

**We recommend getting to the area around 10:30 am**, so plan your departure time accordingly.



## Stroll, Sip or Shop

Recommended duration: 1 hour

Drive time to second stop: 7 minutes

*\*One light food option available at this stop*



## Giddy Up, Partner!

Recommended duration: 1 hour

Drive time to third stop: 25 minutes

*\*One food option available at this stop*



## An Outdoor Art Oasis

Recommended duration: 1 - 1.5 hours

Drive time to fourth stop: 10 - 25 minutes

*\*Two food options available at this stop*



## Choose Your Own Ending

Recommended duration: 1 - 2 hours

*\*Multiple food options available at this stop*



# Navigating the Road



## When to Go

- ✓ This trip is best done from **September - May**. We do not recommend traveling in the hot summer months and many places are closed.
- ✓ This trip is **best done between Thursday - Monday**.



## Stay Overnight

As this trip is quite far, we do recommend spending the night to make the most of the Joshua Tree area. Head to the following link for a list of recommended accommodations.

[guesswheretrips.com/pages/hotels](https://guesswheretrips.com/pages/hotels)



## Itinerary Changes

Descriptions, dates and hours may have changed since publishing the itinerary. Find out if changes have been made to your trip by heading to:

[guesswheretrips.com/updates](https://guesswheretrips.com/updates)

Tip: scan below for the most updated trip!



## Get the Digital Version

Every road trip package includes a QR code that you can scan to get the full digital version of the trip. This is a great option if you are traveling with a group of people in multiple cars!





## What to Pack:

- ☐ A vehicle with a full tank of gas
- ☐ Comfortable walking footwear
- ☐ Sunscreen & **a refillable water bottle**
- ☐ Camera
- ☐ Some form of GPS device (ie. Google Maps)
- ☐ Cell phone charging cables
- ☐ Wallet (cash/coins for parking fees and admission costs)
- ☐ Your Guess Where Trips package
- ☐ Don't forget road trip music! Head to GWT's road trip playlist on Spotify here:



## Questions?

If you have any questions before your trip, please send us an email to **[questions@guesswheretrips.com](mailto:questions@guesswheretrips.com)**. We try to get back to all email inquiries within one business day.

Please note: we are out of the office over the weekend.



## Land Acknowledgement

We recognize that some of the stops listed in this trip date back to a time when not everyone was free.

As we acknowledge slavery and its impact on our history, we recognize the profound inequalities and systemic racism it has bred. This horrific institution dehumanized millions, leaving lasting social and economic consequences. Confronting these truths allows us to reflect, foster dialogue, and work towards a more just society. As you travel, we encourage you to inquire about this history, and ask sites to prominently display their history and its ongoing impact, ensuring it is neither overlooked nor diminished.



# Frequently Asked Questions

How much will the stops cost?

**First Stop:** No fee

**Second Stop:** No fee

**Third Stop:** No fee; however, donations are requested at our featured stop.

**Fourth Stop:** No fee

*\*Please note: parking, gas, tolls, and food may be additional costs.*

Can I bring my dog?

This trip is **pet-friendly!** On every stop there will be at least one option that allows furry friends; however, many of our eatery and shop options only allow pets on outdoor patios. Please coordinate with the weather if you're bringing your furry friend.

When should we leave?

**We recommend getting to the area around 10:30 am.** The later you leave, the less time you'll have to explore all of the stops.

Can I make a reservation for lunch?

We've provided two restaurant options on your third stop where you can have lunch. One option is open daily and does not require reservations; however, our second option is only open between Thursday - Sunday from 11 am - 4 pm, and **reservations are recommended.**

If you'd like to book your table for lunch in advance, scan the QR code below and give them a call. We recommend booking a time around **12 pm - 1 pm**, or hit up our other lunch option instead!





## How long will the total trip take?

See the approximate **round-trip driving distances/times** below. These are driving distances only and do not factor in time spent at stops.

### From **Palm Springs:**

2 hours and 6 minutes / 96 miles

### From **San Bernardino:**

3 hours and 12 minutes / 175 miles

### From **Anaheim\*:**

4 hours and 25 minutes / 246 miles

### From **Pasadena\*:**

4 hours and 45 minutes / 277 miles

### From **Downtown LA\*:**

4 hours and 51 minutes / 279 miles

### From **San Diego\*:**

5 hours and 41 minutes / 342 miles

*\*We recommend booking an overnight hotel if the driving distance is greater than 4 hours.*

## How many people can I bring with me?

We recommended **bringing up to 5 people** on your surprise road trip.

If you're bringing a larger group, we highly recommend having one person in charge of booking reservations at the restaurants and attractions in advance. A digital itinerary can be found in your confirmation email or on **page 5** of this booklet.

## Is this wheelchair or stroller accessible?

**First Stop:** Our featured trail stop is not accessible. We've provided several accessible alternatives.

**Second Stop:** Our featured stop is only somewhat accessible.

**Third Stop:** Our featured stop is only somewhat accessible. We've provided two accessible lunch options.

**Fourth Stop:** There are multiple accessible options on this stop.



Have questions? Email us at [questions@guesswheretrips.com](mailto:questions@guesswheretrips.com).

---

# Risk

Get out on the road and have fun, but please be careful. Obey all road signs, never drink and drive, and use caution and common sense at all times. The risk of injury can be significant, including the potential for permanent disability and death. While particular precautions and personal discipline will minimize this risk, the risk of personal and emotional injury, illness, physical disability, or death does exist. Guess Where Trips Inc., its owners, officers, publishers, and agents assume NO liability for your actions or activities as a result of recommendations within this guide. You agree and acknowledge that you will do some, or all, of the recommendations suggested in this book with full and complete knowledge of the risk and dangers involved, and you agree to accept and assume any and all risks of any nature whatsoever.

More information is available on our website at [www.guesswheretrips.com](http://www.guesswheretrips.com).

The Guess Where Trips Team





Have fun, and be safe!

*Have fun, and be safe!*





## Redefining Road Trips

Copyright © 2026 Guess Where Trips Inc.®

---

 Share Your Trip With Us @guesswheretrips | #guesswheretrips

---