



VISTAS & CAVES

Before You Go

A person with long dark hair is seen from the back, looking through a large telescope. The background is a blurred landscape with hills and a body of water under a soft, hazy sky. The text is overlaid on the left side of the image.

“

So many little hidden
gem destinations in
this trip. I've lived
nearby for years &
have now discovered
a few of my new
favourite places
thanks to GWT!

-GUESS WHERE TRIPPER

How does a surprise road trip work?



Pick a Date

We recommend doing the trip within **6 months** of receiving this road trip. Pay close attention to the 'When To Go' within the 'Navigating the Road' section of this booklet.



Get Ready

The only requirement is having a vehicle, GPS and a driver. The trip is completely **self-guided**, so nothing needs to be booked in advance.



Check Updates

Before leaving, please check **travel updates** on our website. This will provide you with any major changes to the itinerary.



Pack Your Bag

Please refer to the '**What to Pack**' list in this booklet for items we recommend bringing with you.

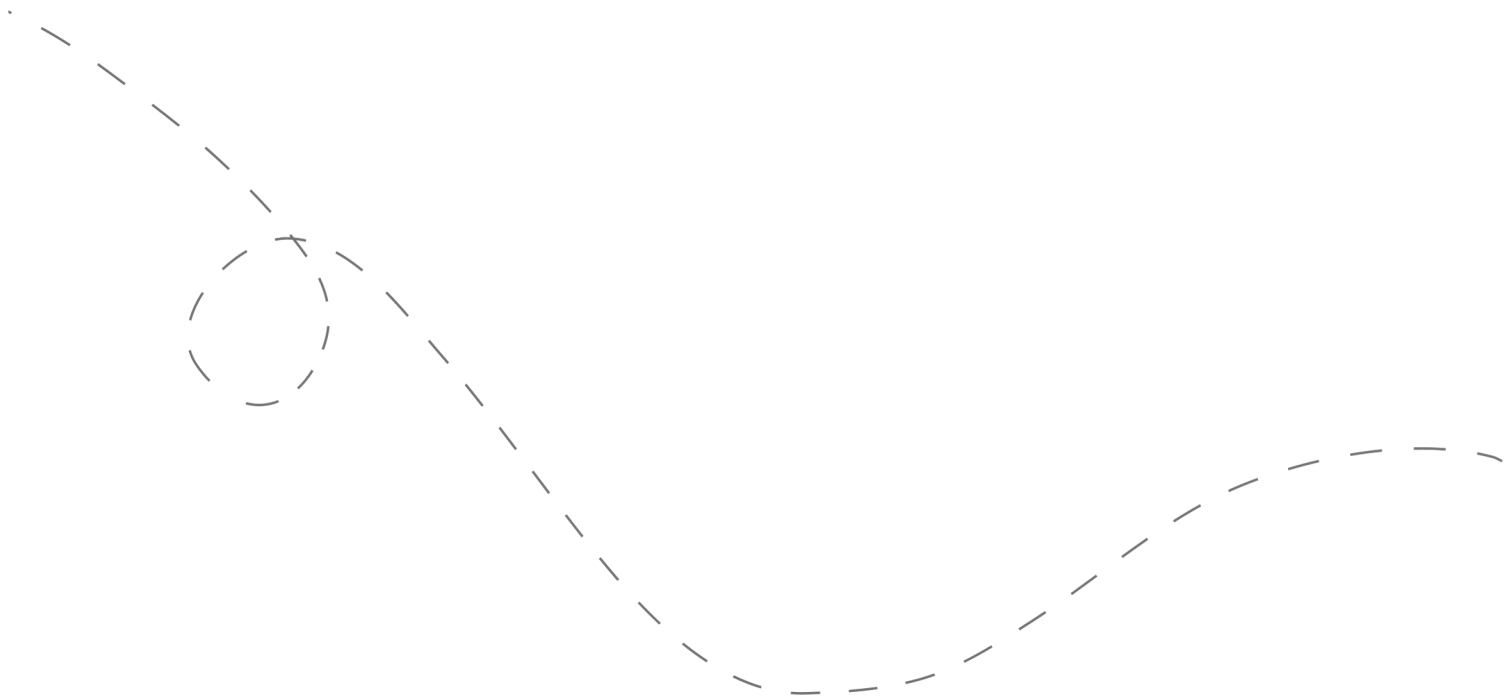


Hit the Road!

Don't open the first envelope until you're ready to leave. Once you're finished at the first stop, you can open the second envelope. Four stops are included within your road trip.

Your day ahead! Without giving away too many details.

We often include a variety of recommendations at each stop. You do not have to go to all of them, pick and choose what works best for you and your travel mates. If you can't get through all of the stops during the day - come back and explore them at a later date!



DETAILED ITINERARY



Time to Depart!

We recommend departing between **8:30 and 9:30 am**. The later you leave, the less time you'll have to explore all of the stops. Note that you may want to leave earlier in the winter time to ensure you don't lose sunlight!



An Adorable Hamlet

Recommended duration: 30 minutes
Drive time to second stop: 12 minutes

**Light food options are available at this stop*



An Outdoor Art Project

Recommended duration: 30 minutes - 1 hour
Drive time to third stop: 15 minutes



Choose Your Own Lunch Stop

Recommended duration: 45 minutes - 1 hour
Drive time to fourth stop: 10 - 20 minutes

**Multiple food options are available at this stop*



A Hiker's Haven

Recommended duration: 1 - 2 hours

**Multiple food options available at this stop*

Navigating the Road



When to Go

- ✓ This trip can be done in **any season** throughout the year.
- ✓ Best done **Wednesday-Saturday**. Some closures may occur on holidays. This trip can be done on Sundays, but many options on stop 3 are closed.



Stay Overnight

Head to the following link for a list of recommended accommodations close to the last stop.

[guesswheretrips.com/pages/hotels](https://www.guesswheretrips.com/pages/hotels)

**The link above will only reveal the general area where your trip will end.*



Itinerary Changes

Descriptions, dates and hours may have changed since publishing the itinerary. Find out if changes have been made to your trip by heading to:

[guesswheretrips.com/updates](https://www.guesswheretrips.com/updates)

Tip: scan below for the most updated trip!



Get the Digital Version

Every road trip package includes a QR code that you can scan to get the full digital version of the trip. This is a great option if you are traveling with a group of people in multiple cars!





What to Pack:

- ☐ A vehicle with a full tank of gas
- ☐ Comfortable walking footwear
- ☐ Weather appropriate clothing
- ☐ Some form of GPS device (ie. Google Maps)
- ☐ Cell phone charging cables
- ☐ **Road trip snacks**
- ☐ Wallet (cash may be required)
- ☐ Your Guess Where Trips package
- ☐ Don't forget road trip music! Head to GWT's road trip playlist on Spotify here:



About the Trip Creator

Jessica Off has been planning road trip itineraries around the world for the last 14 years. She's always been obsessed with connecting the dots of the unexpected and is excited to continue doing so with Guess Where Trips.



Questions?

If you have any questions before your trip, please check out the FAQs on our website. If you can't find the answer to your question, please send us an email at **questions@guesswheretrips.com**.

Please note: we are out of the office over the weekend.

Frequently Asked Questions



How much will the stops cost?

First Stop: No fee

Second Stop: No fee

Third Stop: No fee

Fourth Stop: No fee

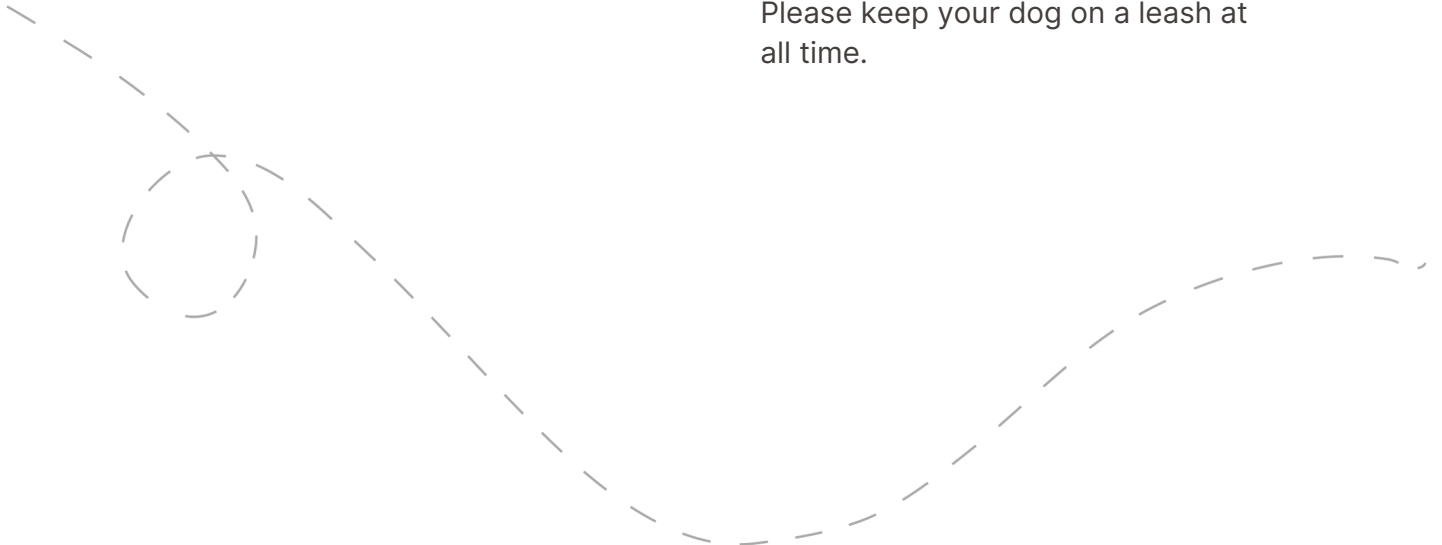
**Please note: gas, tolls, and food may be additional costs.*

When should we leave?

We recommend leaving anytime **between 9:00 and 9:30 am if you're coming from the GTA.** The later you leave, the less time you may have to complete all of the stops.

Can I bring my dog?

You can bring your furry friend, but it may limit you from going into some of the recommended stops. Please keep your dog on a leash at all time.



How long will the total trip take?

See the approximate **round-trip driving distances/times** below. These are driving distances only and do not factor in time spent at stops.

From **Toronto:**

3 hours and 8 minutes / 230 km

From **Oakville/Burlington:**

3 hours and 5 minutes / 206 km

From **Kitchener:**

3 hours and 18 minutes / 210 km

From **Hamilton:**

3 hours and 25 minutes / 260 km

From **Barrie:**

3 hours / 218 km

From **London*:**

5 hours and 14 minutes / 410 km

**We recommend booking an overnight hotel if the driving distance is greater than 4 hours round-trip.*

How many people can I bring with me?

We recommended **bringing up to 5 people** on your surprise road trip.

If you're bringing a larger group, we highly recommend having one person in charge of booking reservations at restaurants and attractions in advance. Please see the previous page for a copy of the digital itinerary.

Is this wheelchair or stroller accessible?

First Stop: Our featured stops are accessible.

Second Stop: The entire stop is accessible

Third Stop: Our featured stop is accessible. Alternative stops are stroller accessible.

Fourth Stop: The stop has one stroller accessible suggestion.

Risk

Get out on the road and have fun, but please be careful. Obey all road signs, never drink and drive, and use caution and common sense at all times. The risk of injury can be significant, including the potential for permanent disability and death. While particular precautions and personal discipline will minimize this risk, the risk of personal and emotional injury, illness, physical disability, or death does exist. Guess Where Trips Inc., its owners, officers, publishers, and agents assume NO liability for your actions or activities as a result of recommendations within this guide. You agree and acknowledge that you will do some, or all, of the recommendations suggested in this book with full and complete knowledge of the risk and dangers involved, and you agree to accept and assume any and all risks of any nature whatsoever.

More information is available on our website at www.guesswheretrips.com.

The Guess Where Trips Team



Have fun, and be safe!

Have fun, and be safe!



Redefining Road Trips

Copyright © 2026 Guess Where Trips Inc.®

 Share Your Trip With Us @guesswheretrips | #guesswheretrips
