



VIEWS & SECRET STOPS

# Before You Go



“

Not to be  
dramatic but  
I went on one  
of your trips last  
weekend and  
it was the best  
day of my life.

-GUESS WHERE TRIPPER

# How does a surprise road trip work?



## Pick a Date

We recommend doing the trip within **6 months** of receiving this road trip. Pay close attention to the 'When To Go' within the 'Navigating the Road' section of this booklet.



## Get Ready

The only requirement is having a vehicle, GPS and a driver. The trip is completely **self-guided**, so nothing needs to be booked in advance.



## Check Updates

Before leaving, please check **travel updates** on our website. This will provide you with any major changes to the itinerary.



## Pack Your Bag

Please refer to the '**What to Pack**' list in this booklet for items we recommend bringing with you.

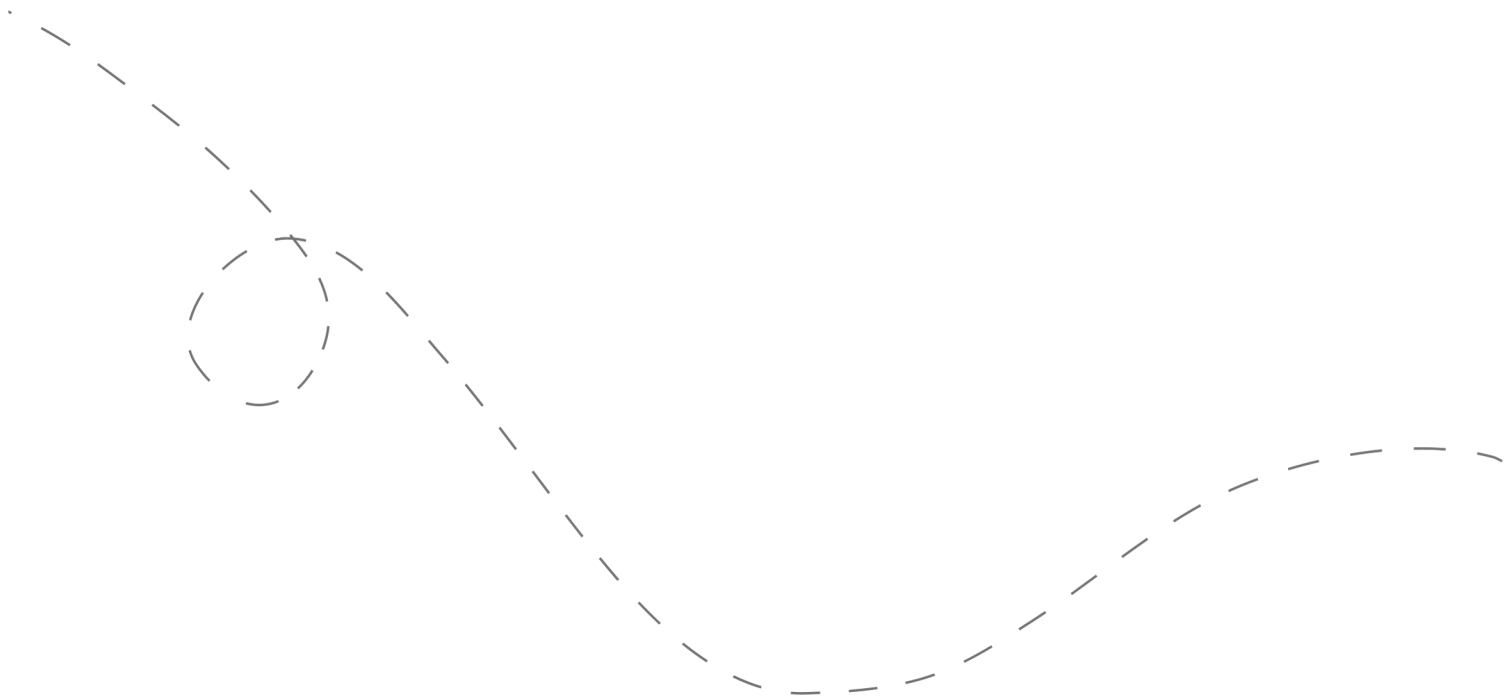


## Hit the Road!

Don't open the first envelope until you're ready to leave. Once you're finished at the first stop, you can open the second envelope. Four stops are included within your road trip.

# Your day ahead! Without giving away too many details.

We often include a variety of recommendations at each stop. You do not have to go to all of them, pick and choose what works best for you and your travel mates. If you can't get through all of the stops during the day - come back and explore them at a later date!



# DETAILED ITINERARY



## Time to Depart!

We recommend departing between **8 am - 9 am.**

1

## A Historic Canadian City

Recommended duration: 30 minutes - 1 hour

Drive time to second stop: 20 minutes

*\*One food option is available at this stop*

2

## The Scenic Route

Recommended duration: 1 hour

Drive time to third stop: 25 minutes

*\*Multiple food options are available at this stop*

3

## All About the Views

Recommended duration: 30 minutes

Drive time to fourth stop: 10 minutes

4

## The Cutest Waterfront Town

Recommended duration: 1 - 2 hours

*\*Multiple food option are available at this stop*



Have questions? Email us at [questions@guesswheretrips.com](mailto:questions@guesswheretrips.com).

# Navigating the Road



## When to Go

- ✓ This trip is **best done from spring - fall**. Can be done in the winter; however, our featured suggestion on stop #1 is closed between mid-Oct to mid-Apr.
- ✓ Can be done **any day of the week**. Some closures may occur on holidays.



## Stay Overnight

Head to the following link for a list of recommended accommodations close to the last stop.

**[guesswheretrips.com/pages/hotels](https://www.guesswheretrips.com/pages/hotels)**

*\*The link above will only reveal the general area where your trip will end.*



## Itinerary Changes

Descriptions, dates and hours may have changed since publishing the itinerary. Find out if changes have been made to your trip by heading to:

**[guesswheretrips.com/updates](https://www.guesswheretrips.com/updates)**

Tip: scan below for the most updated trip!



## Get the Digital Version

Every road trip package includes a QR code that you can scan to get the full digital version of the trip. This is a great option if you are traveling with a group of people in multiple cars!







## What to Pack:

- ☐ A vehicle with a full tank of gas
- ☐ Comfortable walking footwear
- ☐ Weather appropriate clothing
- ☐ Some form of GPS device (ie. Google Maps)
- ☐ Cell phone charging cables
- ☐ Road trip snacks
- ☐ Wallet (cash may be required)
- ☐ Your Guess Where Trips package
- ☐ Don't forget road trip music! Head to GWT's road trip playlist on Spotify here:



## About the Trip Creator

Nina is an Ottawa-based travel blogger and Instagrammer at @ninanearandfar, where she writes about exploring locally, day trips, and destinations for short trips. Nina works full-time as a researcher and is pursuing graduate studies, so she is passionate about encouraging people to balance work and higher education with travel and local experiences.



## Land Acknowledgement

We acknowledge that the land you will be travelling on is the traditional unsundered territory of the Wendake-Nionwentsio, people.

Guess Where Trips believes land acknowledgments are an important way of recognizing and expressing gratitude to the First Nations, Inuit and Métis whose that was stolen from them. Please respect this land.

# Frequently Asked Questions



How much will the stops cost?

**First Stop:** No fee

**Second Stop:** Our trail stop has a fee per vehicle (\$). There are free alternatives.

**Third Stop:** Our trail stop has a fee per vehicle (\$). There are free alternatives.

**Fourth Stop:** No fee

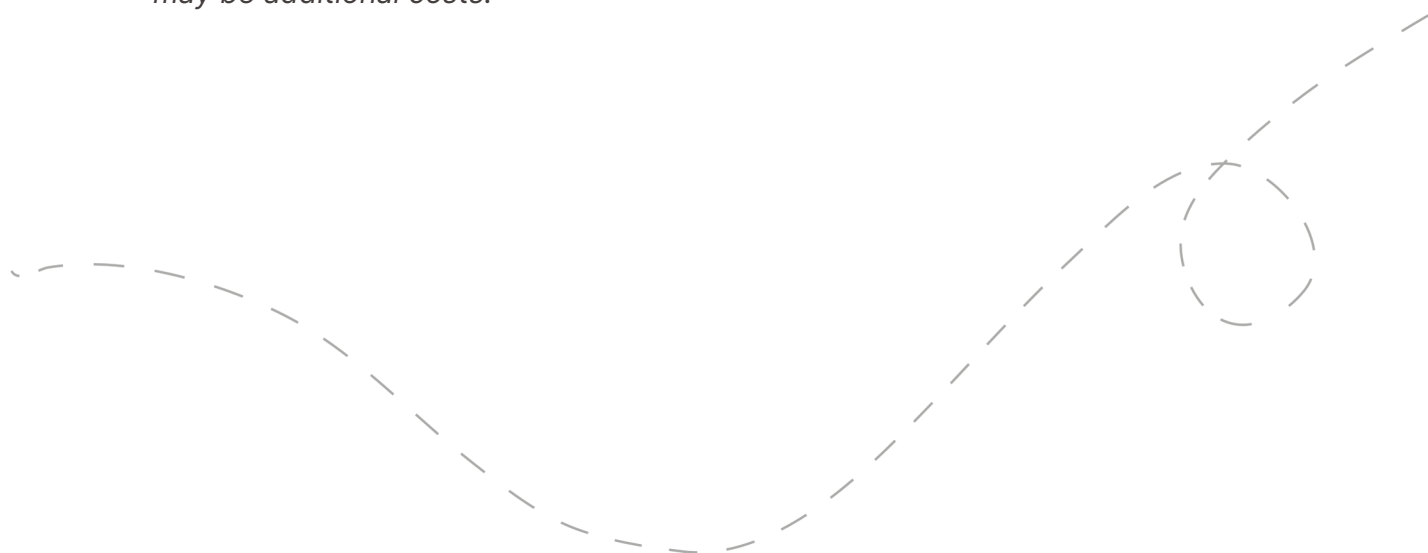
*\*Please note: gas, tolls, and food may be additional costs.*

When should we leave?

We recommend leaving anytime **between 8:00 am - 9:00 am**. The later you leave, the less time you may have to complete all of the stops.

Can I bring my dog?

You can bring your furry friend, but it may limit you from going into some of the recommended stops. Please keep your dog on a leash at all time.





## How long will the total trip take?

See the approximate **round-trip driving distances/times** below. These are driving distances only and do not factor in time spent at stops.

From **Kingston:**

2 hours and 56 minutes / 256 km

From **Ottawa:**

3 hours and 27 minutes / 332 km

From **Winchester:**

2 hours and 5 minutes / 150 km

From **Gatineau:**

3 hours and 49 minutes / 294 km

*\*We recommend booking an overnight hotel if the driving distance is greater than 4 hours round-trip.*

## How many people can I bring with me?

We recommended **bringing up to 5 people** on your surprise road trip.

If you're bringing a larger group, we highly recommend having one person in charge of booking reservations at restaurants and attractions in advance. Please see the previous page for a copy of the digital itinerary.

## Is this wheelchair or stroller accessible?

**First Stop:** There are multiple accessible options at this stop.

**Second Stop:** There are multiple accessible options at this stop.

**Third Stop:** This stop is not accessible.

**Fourth Stop:** There are multiple accessible options at this stop.



Have questions? Email us at [questions@guesswheretrips.com](mailto:questions@guesswheretrips.com).

---

# Risk

Get out on the road and have fun, but please be careful. Obey all road signs, never drink and drive, and use caution and common sense at all times. The risk of injury can be significant, including the potential for permanent disability and death. While particular precautions and personal discipline will minimize this risk, the risk of personal and emotional injury, illness, physical disability, or death does exist. Guess Where Trips Inc., its owners, officers, publishers, and agents assume NO liability for your actions or activities as a result of recommendations within this guide. You agree and acknowledge that you will do some, or all, of the recommendations suggested in this book with full and complete knowledge of the risk and dangers involved, and you agree to accept and assume any and all risks of any nature whatsoever.

More information is available on our website at [www.guesswheretrips.com](http://www.guesswheretrips.com).

The Guess Where Trips Team



Have fun, and be safe!

*Have fun, and be safe!*



## Redefining Road Trips

Copyright © 2026 Guess Where Trips Inc.®

---

 Share Your Trip With Us @guesswheretrips | #guesswheretrips

---