



TIMELESS TOWNS & SCENIC SIPS

Before You Go

A photograph of a lush green forest. In the foreground, a dirt path covered in small stones leads from the bottom right towards the center. To the left of the path, a small stream flows over rocks. The background is filled with dense green foliage and trees. A large red quotation mark is positioned in the upper left area of the image.

“

Not to be dramatic
but I went on one
of your trips last
weekend and
it was the best day
of my life.

-GUESS WHERE TRIPPER

How does a surprise road trip work?



Pick a Date

We recommend doing the trip within **6 months** of receiving this road trip. Pay close attention to the 'When To Go' within the 'Navigating the Road' section of this booklet.



Get Ready

The only requirement is having a vehicle, GPS and a driver. The trip is completely **self-guided**, so nothing needs to be booked in advance.



Check Updates

Before leaving, please check **travel updates** on our website. This will provide you with any major changes to the itinerary.



Pack Your Bag

Please refer to the '**What to Pack**' list in this booklet for items we recommend bringing with you.

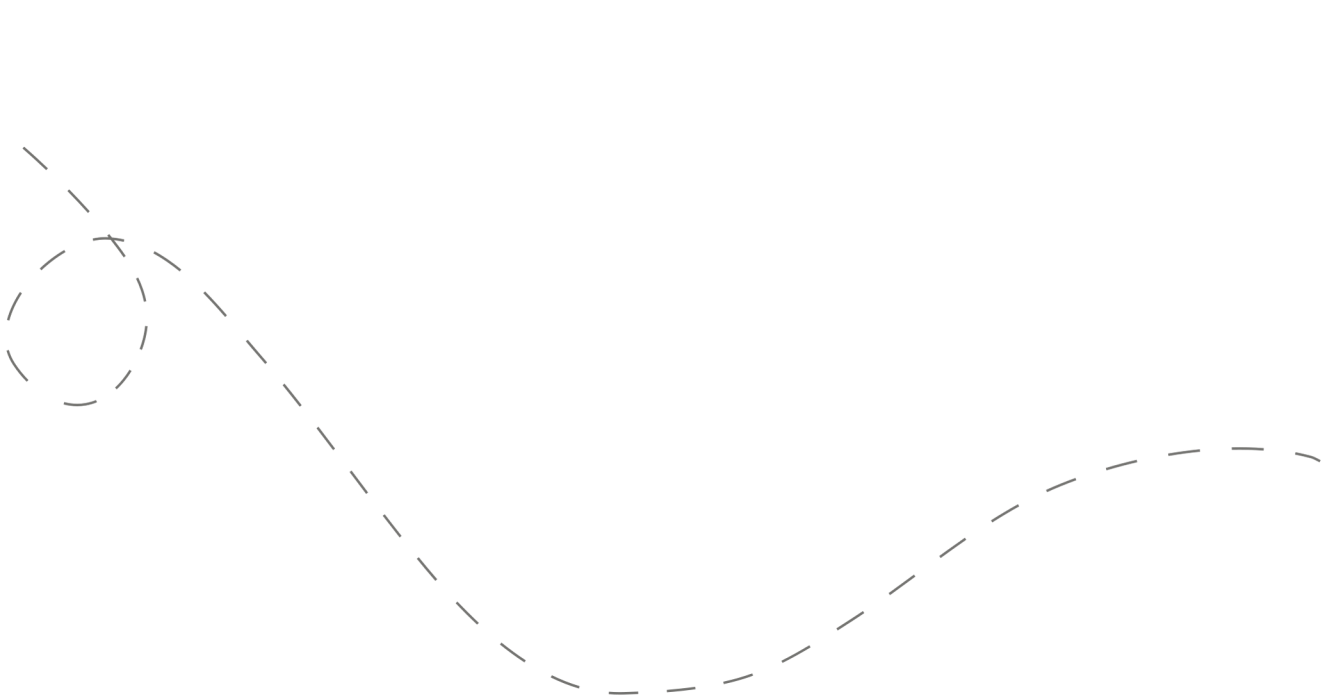


Hit the Road!

Don't open the first envelope until you're ready to leave. Once you're finished at the first stop, you can open the second envelope. Four stops are included within your road trip.

Your day ahead! Without giving away too many details.

We often include a variety of recommendations at each stop. You do not have to go to all of them, pick and choose what works best for you and your travel mates. If you can't get through all of the stops during the day - come back and explore them at a later date!



DETAILED ITINERARY



Time to Depart!

We recommend departing between **9:00 - 9:30 am**. The later you leave, the less time you'll have to explore all of the stops.

1

Island Adventures

Recommended duration: 45 minutes - 1 hour

Drive time to second stop: 5 - 22 minutes

**Light food options are available at this stop*

2

Brews or Blooms?

Recommended duration: 45 minutes - 1 hour

Drive time to third stop: 10 - 20 minutes

3

Bites & Historic Sites

Recommended duration: 1 - 1.5 hours

Drive time to fourth stop: 22 minutes

**Multiple food options are available at this stop*

4

Choose Your Own Adventure

Recommended duration: 1-2 hours

**Multiple food options are available at this stop*

Navigating the Road



When to Go

- ✓ This trip is best done **Tuesday - Sunday, year round.**
- ✓ You can travel on a Monday; however, a few of our suggestions will be closed.



Stay Overnight

Head to the following link for a list of recommended accommodations close to the last stop.

[guesswheretrips.com/pages/hotels](https://www.guesswheretrips.com/pages/hotels)

**The link above will only reveal the general area where your trip will end.*



Itinerary Changes

Descriptions, dates and hours may have changed since publishing the itinerary. Find out if changes have been made to your trip by heading to:

[guesswheretrips.com/updates](https://www.guesswheretrips.com/updates)

Tip: scan below for the most updated trip!



Get the Digital Version

Every road trip package includes a QR code that you can scan to get the full digital version of the trip. This is a great option if you are traveling with a group of people in multiple cars!





What to Pack:

- ☐ A vehicle with a full tank of gas
- ☐ Comfortable walking footwear
- ☐ Weather appropriate clothing/apparel
- ☐ Sunscreen & bug spray (lots of easy outdoor activities)
- ☐ **A book to donate** to a Free Little Library on stop #4!
- ☐ Bring a **frisbee** or two if you're traveling on the weekend.
- ☐ Some form of GPS device (ie. Google Maps)
- ☐ Cell phone charging cables
- ☐ Wallet (cash/coins might be required)
- ☐ Your Guess Where Trips package
- ☐ Don't forget road trip music! Head to GWT's road trip playlist on Spotify here:



About the Trip Creator

As a 16th generation North Carolinian, Megan wants to inspire others to live abundantly local and enjoy all the riches of her home state. She helps locals discover great food and activities for sensible budgets and everyday play. You can follow her daily adventures on Instagram at **@nceatandplay**.



Land Acknowledgement

We recognize that some of the stops listed in this trip date back to a time when not everyone was free.

As we acknowledge slavery and its impact on our history, we recognize the profound inequalities and systemic racism it has bred. This horrific institution dehumanized millions, leaving lasting social and economic consequences. Confronting these truths allows us to reflect, foster dialogue, and work towards a more just society. As you travel, we encourage you to inquire about this history, and ask sites to prominently display their history and its ongoing impact, ensuring it is neither overlooked nor diminished.

Frequently Asked Questions

How much will the stops cost?

First Stop: No fee

Second Stop: No fee

Third Stop: Parking fees may apply

Fourth Stop: No fee

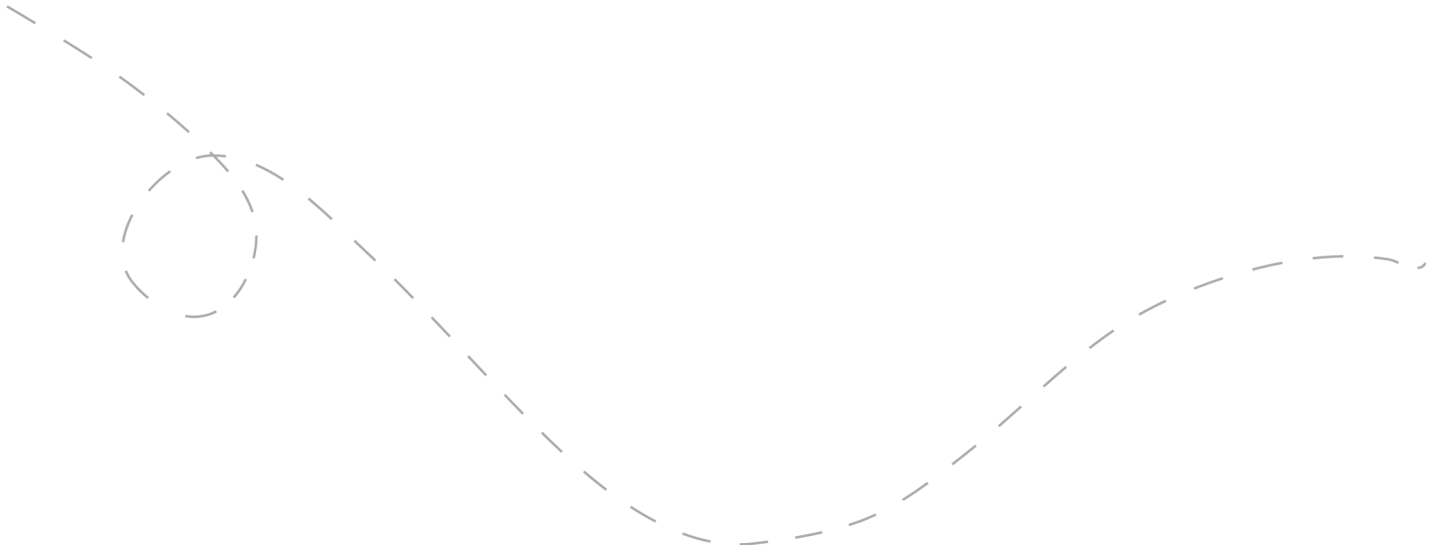
**Please note: gas, tolls, and food may be additional costs.*

When should we leave?

We recommend leaving **between 9:00 - 9:30 am**. The later you leave, the less time you'll have to explore all of the stops.

Can I bring my dog?

This trip is **somewhat pet friendly!** On every stop, there will be at least one option that allows your furry friends. However, most of our shop and eatery suggestions only allow dogs on outdoor patios, so please coordinate with the weather.



How long will the total trip take?

See the approximate **round-trip driving distances/times** below. These are driving distances only and do not factor in time spent at stops.

From **Raleigh:**

2 hours and 30 minutes / 118 miles

From **Durham:**

1 hour and 50 minutes / 78 miles

From **Greensboro:**

2 hours and 15 minutes / 106 miles

From **Winston-Salem:**

3 hours / 160 miles

From **Fayetteville:**

3 hours and 56 minutes / 207 miles

From **Charlotte*:**

4 hours and 45 minutes / 286 miles

**We recommend booking an overnight accommodation if your roundtrip driving time is greater than 4 hours.*

How many people can I bring with me?

We recommended **bringing up to 5 people** on your surprise road trip.

If you're bringing a larger group, we highly recommend having one person in charge of booking reservations at restaurants and attractions in advance. Please see the previous page for a copy of the digital itinerary.

Is this wheelchair or stroller accessible?

First Stop: Our featured stop is somewhat accessible. We've provided other accessible options.

Second Stop: Two suggestions are accessible; one option is only somewhat accessible.

Third Stop: There are multiple accessible options at this stop.

Fourth Stop: There are multiple accessible options at this stop.



Have questions? Email us at questions@guesswheretrips.com.

Risk

Get out on the road and have fun, but please be careful. Obey all road signs, never drink and drive, and use caution and common sense at all times. The risk of injury can be significant, including the potential for permanent disability and death. While particular precautions and personal discipline will minimize this risk, the risk of personal and emotional injury, illness, physical disability, or death does exist. Guess Where Trips Inc., its owners, officers, publishers, and agents assume NO liability for your actions or activities as a result of recommendations within this guide. You agree and acknowledge that you will do some, or all, of the recommendations suggested in this book with full and complete knowledge of the risk and dangers involved, and you agree to accept and assume any and all risks of any nature whatsoever.

More information is available on our website at www.guesswheretrips.com.

The Guess Where Trips Team



Have fun, and be safe!

Have fun, and be safe!



Redefining Road Trips

Copyright © 2026 Guess Where Trips Inc.®

 Share Your Trip With Us @guesswheretrips | #guesswheretrips
