



THE LONG & UNKNOWN ROAD

Before You Go

A person is seen from behind, walking away on a dirt path through a dense forest. They are wearing a tan beanie, an orange jacket, and a large grey quilted backpack. A silver water bottle is visible in a side pocket of the backpack. The path is covered with fallen leaves, and the trees are tall and thin, creating a dappled light effect on the ground.

“

Not to be dramatic
but I went on one
of your trips last
weekend and
it was the best day
of my life.

-GUESS WHERE TRIPPER

How does a surprise road trip work?



Pick a Date

We recommend doing the trip within **6 months** of receiving this road trip. Pay close attention to the 'When To Go' within the 'Navigating the Road' section of this booklet.



Get Ready

The only requirement is having a vehicle, GPS and a driver. The trip is completely **self-guided**, so nothing needs to be booked in advance.



Check Updates

Before leaving, please check **travel updates** on our website. This will provide you with any major changes to the itinerary.



Pack Your Bag

Please refer to the '**What to Pack**' list in this booklet for items we recommend bringing with you.

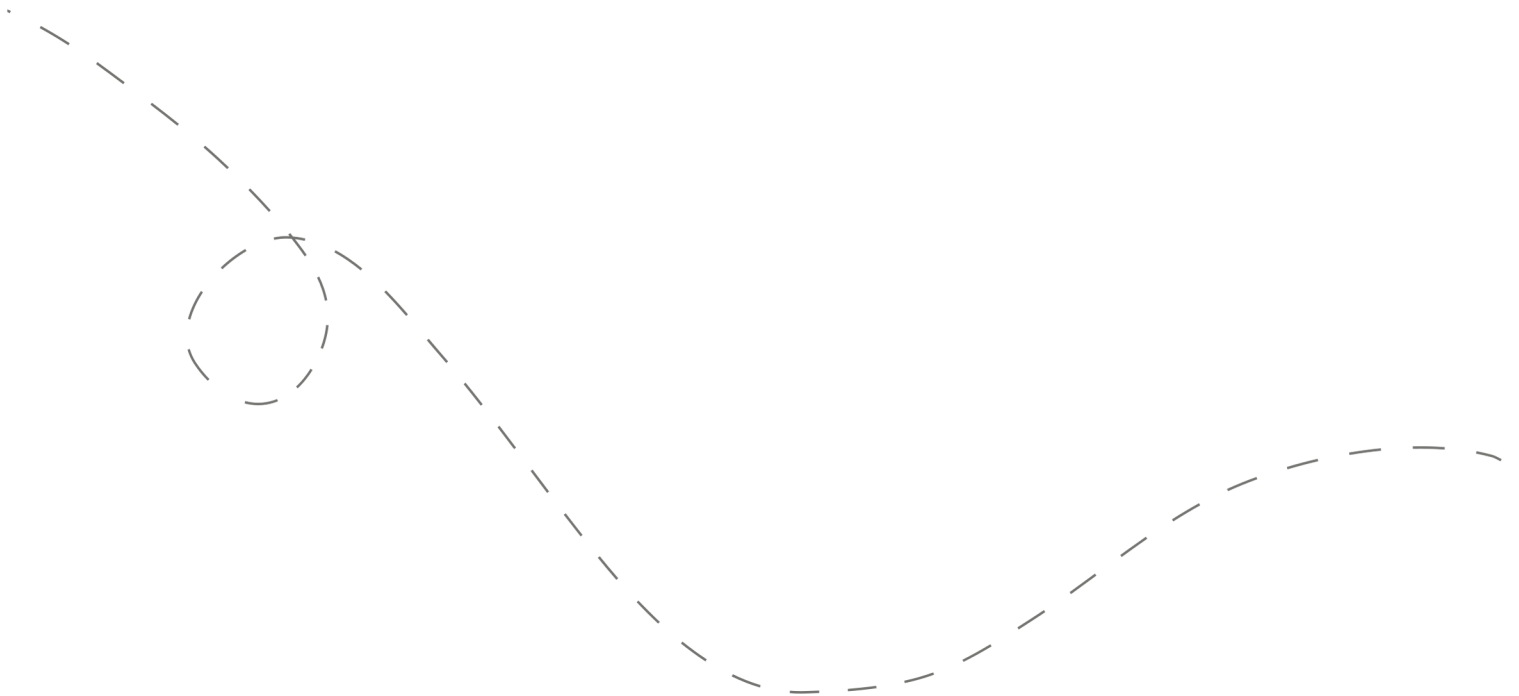


Hit the Road!

Don't open the first envelope until you're ready to leave. Once you're finished at the first stop, you can open the second envelope. Four stops are included within your road trip.

Your day ahead! Without giving away too many details.

We often include a variety of recommendations at each stop. You do not have to go to all of them, pick and choose what works best for you and your travel mates. If you can't get through all of the stops during the day - come back and explore them at a later date!



DETAILED ITINERARY



Time to Depart!

We recommend departing **around 8:30 am.**

1

A Berry Good Time

Recommended duration: 30 minutes

Drive time to second stop: 1 hour and 30 minutes

**Light food options are available at this stop*

2

Views & Falls

Recommended duration: 45 minutes

Drive time to third stop: 7 minutes

3

Quirky History

Recommended duration: 30 minutes

Drive time to fourth stop: 8 minutes

4

The Power of Nature

Recommended duration: 45 minutes - 1 hour

**Light food options are available at this stop*

Navigating the Road



When to Go

- ✓ This trip is best done **from spring to fall**.
- ✓ Best done between **Wednesday to Sunday**. Some closures may occur on holidays. We do not recommend travelling on Mondays, Tuesdays, or in the winter months.



Stay Overnight

Head to the following link for a list of recommended accommodations close to the last stop.

guesswheretrips.com/pages/hotels

**The link above will only reveal the general area where your trip will end.*



Itinerary Changes

Descriptions, dates and hours may have changed since publishing the itinerary. Find out if changes have been made to your trip by heading to:

guesswheretrips.com/updates

Tip: scan below for the most updated trip!



Get the Digital Version

Every road trip package includes a QR code that you can scan to get the full digital version of the trip. This is a great option if you are traveling with a group of people in multiple cars!





What to Pack:

- ☐ A vehicle with a full tank of gas
- ☐ Comfortable walking footwear
- ☐ Warm clothes & layers (winter)
- ☐ Some form of GPS device
(ie. Google Maps)
- ☐ Wallet (cash may be required)
- ☐ Road trip snacks
- ☐ Your Guess Where Trips package
- ☐ Bring your AB Provincial Parks
pass if you have one!
- ☐ Don't forget road trip music! Head
to GWT's road trip playlist on
Spotify here:



About the Trip Creator

Tamara Elliott is an award-winning travel writer/travel blogger behind the blog and Instagram @globeguide. In 2013 she founded Globe Guide, which offers savvy tips for exploring destinations around the world while showcasing unique experiences.



Land Acknowledgement

We acknowledge that the land you will be travelling on is the traditional unsundered territory of the Tsuu T'ina people.

Guess Where Trips believes land acknowledgments are an important way of recognizing and expressing gratitude to the First Nations, Inuit or Métis land that was stolen from them.

Frequently Asked Questions

How much will the stops cost?

First Stop: No fee

Second Stop: No fee

Third Stop: No fee

Fourth Stop: A few options require admission fees (\$), but we've provided free alternatives.

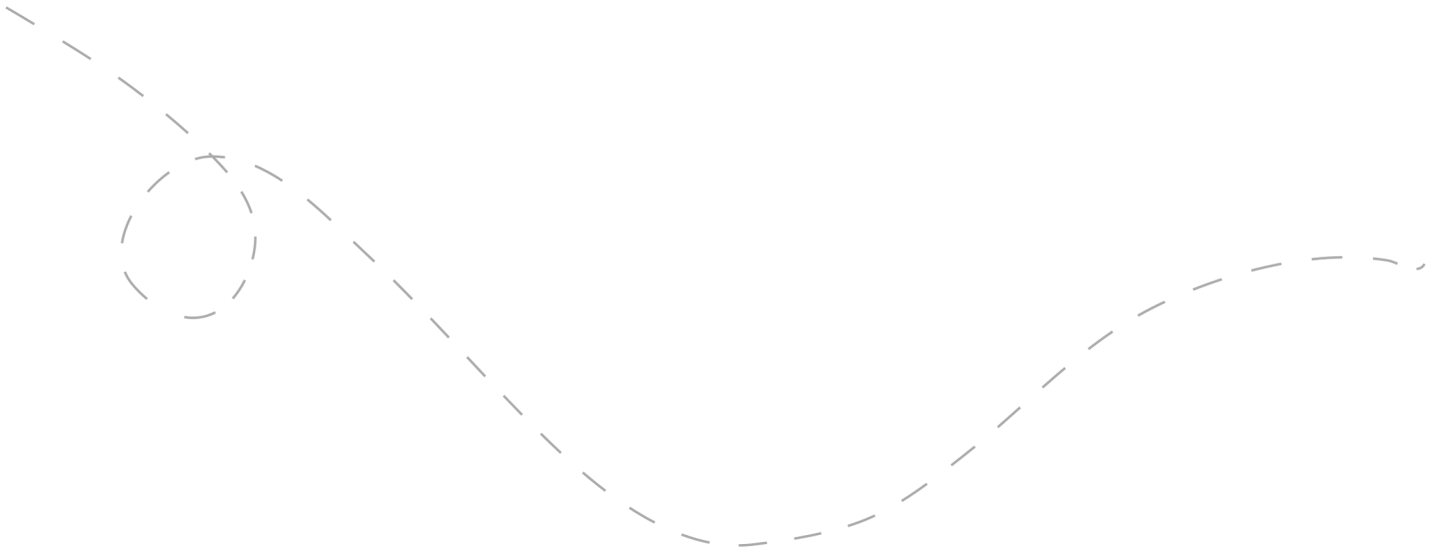
**Please note: gas, tolls, and food may be additional costs.*

When should we leave?

We recommend **leaving at 8:30 am**. The later you leave, the less time you may have to complete all the stops.

Can I bring my dog?

This trip is pet friendly. Please keep your dog on a leash at all times at the outdoor stops. As you know, dogs are not allowed in any of the food spots. When in doubt, we recommend confirming pet rules with certain locations.



How long will the total trip take?

See the approximate **round-trip driving distances/times** below. These are driving distances only and do not factor in time spent at stops.

From **Calgary***:

4 hours and 42 minutes / 448 km

From **Okotoks**:

3 hours and 50 minutes / 353 km

From **Cochrane***:

5 hours and 19 minutes / 486 km

**We recommend booking an overnight hotel if the driving distance is greater than 4 hours round-trip.*

How many people can I bring with me?

We recommended **bringing up to 5 people** on your surprise road trip.

If you're bringing a larger group, we highly recommend having one person in charge of booking reservations at restaurants and attractions in advance. Please see the previous page for a copy of the digital itinerary.

Is this wheelchair or stroller accessible?

First Stop: The entire stop is accessible

Second Stop: This stop is somewhat accessible.

Third Stop: There are multiple accessible options on this stop.

Fourth Stop: There are multiple accessible options on this stop.

Risk

Get out on the road and have fun, but please be careful. Obey all road signs, never drink and drive, and use caution and common sense at all times. The risk of injury can be significant, including the potential for permanent disability and death. While particular precautions and personal discipline will minimize this risk, the risk of personal and emotional injury, illness, physical disability, or death does exist. Guess Where Trips Inc., its owners, officers, publishers, and agents assume NO liability for your actions or activities as a result of recommendations within this guide. You agree and acknowledge that you will do some, or all, of the recommendations suggested in this book with full and complete knowledge of the risk and dangers involved, and you agree to accept and assume any and all risks of any nature whatsoever.

More information is available on our website at www.guesswheretrips.com.

The Guess Where Trips Team



Have fun, and be safe!

Have fun, and be safe!



Redefining Road Trips

Copyright © 2026 Guess Where Trips Inc.®

 Share Your Trip With Us @guesswheretrips | #guesswheretrips
