



Spooky Sightings
SPOOKY SIGHTS & GHOSTLY TALES

Before You Go



“

The most eerily
beautiful day trip
we've ever done!
Can't believe some
of the stories we
read and the
places we visited.

-GUESS WHERE TRIPPER

How does a surprise road trip work?



Pick a Date

We recommend doing the trip within **6 months** of receiving this road trip. Pay close attention to the 'When To Go' within the 'Navigating the Road' section of this booklet.



Get Ready

The only requirement is having a vehicle, GPS and a driver. The trip is completely **self-guided**, so nothing needs to be booked in advance.



Check Updates

Before leaving, please check **travel updates** on our website. This will provide you with any major changes to the itinerary.



Pack Your Bag

Please refer to the '**What to Pack**' list in this booklet for items we recommend bringing with you.

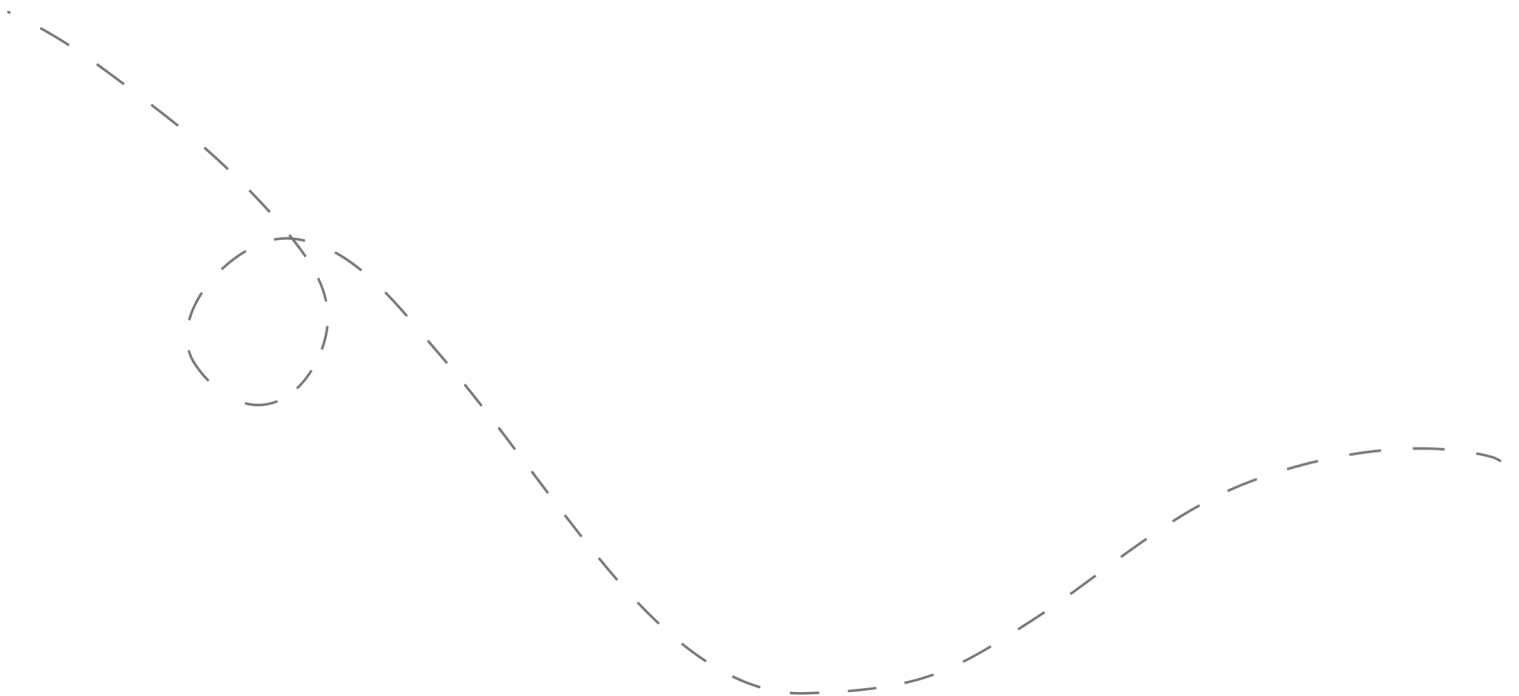


Hit the Road!

Don't open the first envelope until you're ready to leave. Once you're finished at the first stop, you can open the second envelope. Four stops are included within your road trip.

Your day ahead! Without giving away too many details.

We often include a variety of recommendations at each stop. You do not have to go to all of them, pick and choose what works best for you and your travel mates. If you can't get through all of the stops during the day - come back and explore them at a later date!



DETAILED ITINERARY



Time to Depart!

We recommend departing between **9 am - 9:30 am**. The later you leave the less time you'll have to explore all of the stops.

1

Haunted History

Recommended duration: 1 hour

Drive time to second stop: 11 minutes

2

An Abandoned Asylum

Recommended duration: 30 minutes

Drive time to third stop: 12 minutes

**One food option is recommended at this stop*

3

Dining with Ghosts

Recommended duration: 1 hour - 1.5 hours

Drive time to fourth stop: 10 minutes

**Multiple food options recommended at this stop*

4

Spirited Ruins

Recommended duration: 1 hour

Navigating the Road



When to Go

This can be done **any day of the week throughout the year**. Note that one brewery option on stop #3 is closed Monday & Tuesday.

Please note: We do not recommend travelling on holidays as some of our recommendations may be closed.



Itinerary Changes

Descriptions, dates and hours may have changed since publishing the itinerary. Find out if changes have been made to your trip by heading to:

guesswheretrips.com/updates

Tip: Scan below for the most updated trip!



Stay Overnight

Head to the following link for a list of recommended accommodations close to the last stop.

guesswheretrips.com/pages/hotels

**The link above will only reveal the general area where your trip will end.*



Get the Digital Version

Every road trip package includes a QR code that you can scan to get the full digital version of the trip. This is a great option if you are traveling with a group of people in multiple cars!





What to Pack:

- ☐ A vehicle with a full tank of gas
- ☐ A Hamilton Conservation Authority membership (optional)
- ☐ Download the Passport Parking app for metered parking
- ☐ Comfortable walking or hiking footwear
- ☐ Some form of GPS device (ie. Google Maps)
- ☐ Cell phone charging cables
- ☐ Wallet (cash/coins might be required)
- ☐ Your Guess Where Trips package

Don't forget road trip music! Head to GWT's road trip playlist on Spotify here:



Land Acknowledgement

We acknowledge that the land you will be travelling on is the traditional unsundered territory of the Mississauga people.

Guess Where Trips believes land acknowledgments are an important way of recognizing and expressing gratitude to the First Nations, Inuit or Métis land that was stolen from them. Please respect this land.



About the Trip Creator

Digital Content Creator by day and Paranormal Investigator by night, Krista Maryk (@hauntinglykrista), is a lover of all things spooky, strange and supernatural. She has made a name for herself online by showcasing various haunted places in Ontario and sharing her paranormal experiences. When she's not out hunting ghosts, you can find her at home cuddled up with her beautiful dog and tuxedo cats... probably watching YouTube with a bowl of ramen.

Frequently Asked Questions

How much will the stops cost?

First Stop: No fee

Second Stop: No fee

Third Stop: No fee

Fourth Stop: Both recommendations have a parking fee of \$11 per vehicle.

**Please note: gas, metered parking and food may be additional costs.*

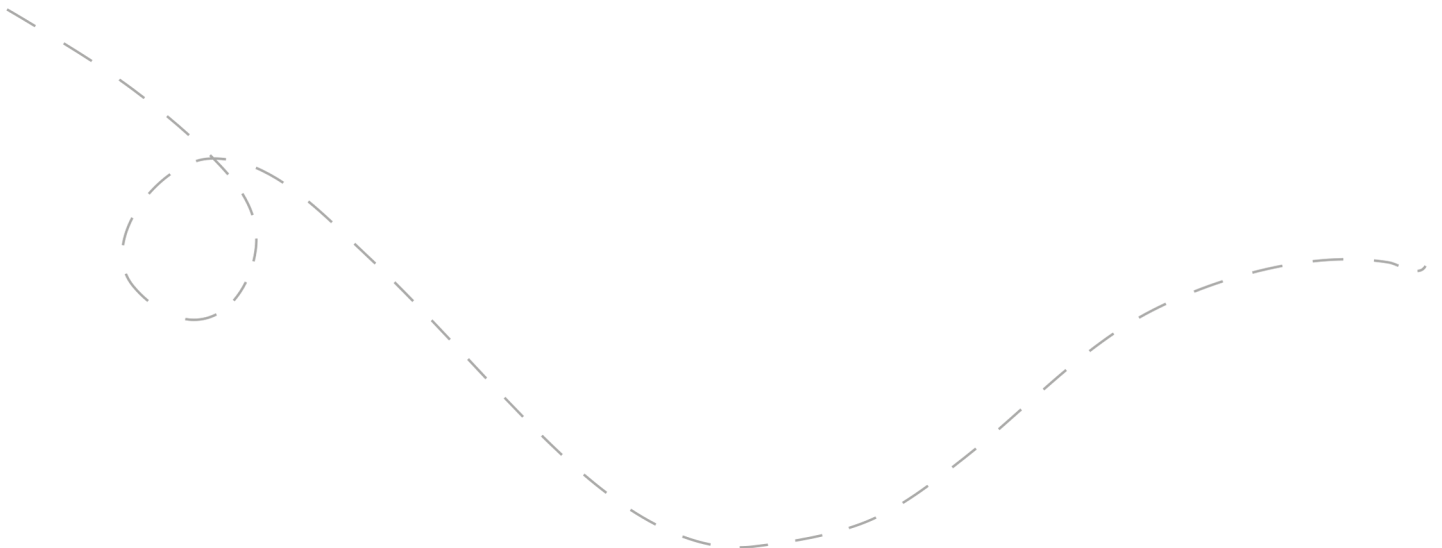
When should we leave?

We recommend departing **between 9:00 am - 9:30 am**. The later you leave the less time you may have to complete all of the stops.

Can I bring my dog?

You can bring your furry friend, but it will limit you from going into our main restaurant recommendations on the third stop. You could grab take out and find your own picnic spot nearby!

Please keep your dog on a leash at all times.



How long will the total trip take?

See the approximate round-trip driving distances/times below. These are driving distances only and do not factor in time spent at stops.

From **Toronto:**

2 hours and 16 minutes / 162 km

From **Oakville:**

1 hour and 25 minutes / 90 km

From **Oshawa:**

3 hours and 14 minutes / 280 km

From **Kitchener:**

2 hours and 10 minutes / 135 km

From **London:**

3 hours and 9 minutes / 265 km

From **Barrie:**

3 hours and 31 minutes / 326 km

From **Niagara Falls:**

2 hours and 16 minutes / 190 km

How many people can I bring with me?

We recommended **bringing up to 5 people** on your surprise road trip.

If you're bringing a larger group, we highly recommend having one person in charge of booking reservations at restaurants and attractions in advance. Please see the previous page for a copy of the digital itinerary.

Is this wheelchair or stroller accessible?

First Stop: Most of this stop is accessible.

Second Stop: Both recommendations on this stop are fully accessible.

Third Stop: The entire stop is accessible.

Fourth Stop: Unfortunately none of the recommendations are accessible.

Risk

Get out on the road and have fun, but please be careful. Obey all road signs, never drink and drive, and use caution and common sense at all times. The risk of injury can be significant, including the potential for permanent disability and death. While particular precautions and personal discipline will minimize this risk, the risk of personal and emotional injury, illness, physical disability, or death does exist. Guess Where Trips Inc., its owners, officers, publishers, and agents assume NO liability for your actions or activities as a result of recommendations within this guide. You agree and acknowledge that you will do some, or all, of the recommendations suggested in this book with full and complete knowledge of the risk and dangers involved, and you agree to accept and assume any and all risks of any nature whatsoever.

More information is available on our website at www.guesswheretrips.com.

The Guess Where Trips Team



Have fun, and be safe!

Have fun, and be safe!



Spooky Sights

Want to make this into a
scavenger hunt?

Want to make this surprise trip a little more exciting?
Some of the clues may involve some walking & writing.
Follow the instructions and read below,
and when you're all set... you're good to go!

Each stop contains a standard booklet of recommendations within each area. We've also included a clue in each envelope that will require you to solve a simple puzzle before heading to the next stop. The scavenger style clues are completely optional!

Extra things to bring on the scavenger hunt:

- Pen or pencil
- A hard surface (this will make it easier to write on)
- A GPS app like Google Maps or Waze