



SOUTH BAY SECRETS

South Bay Secrets

Before You Go



“

This was the
perfect trip close to
home! We found so
many new things
we didn't know
were in the area

-GUESS WHERE TRIPPER

How does a surprise road trip work?



Pick a Date

We recommend doing the trip within **6 months** of receiving this road trip. Pay close attention to the 'When To Go' within the 'Navigating the Road' section of this booklet.



Get Ready

The only requirement is having a vehicle, GPS and a driver. The trip is completely **self-guided**, so nothing needs to be booked in advance.



Check Updates

Before leaving, please check **travel updates** on our website. This will provide you with any major changes to the itinerary.



Pack Your Bag

Please refer to the '**What to Pack**' list in this booklet for items we recommend bringing with you.

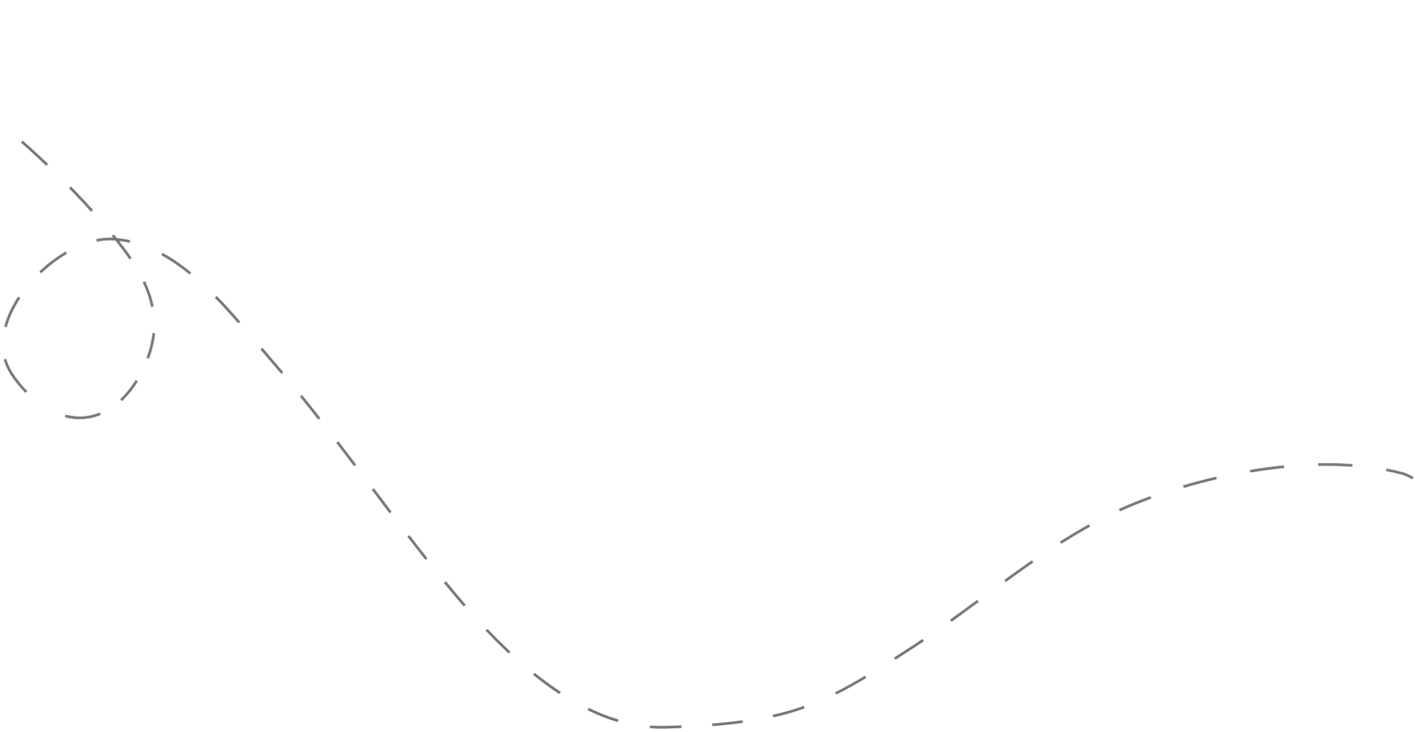


Hit the Road!

Don't open the first envelope until you're ready to leave. Once you're finished at the first stop, you can open the second envelope. Four stops are included within your road trip.

Your day ahead! Without giving away too many details.

We often include a variety of recommendations at each stop. You do not have to go to all of them, pick and choose what works best for you and your travel mates. If you can't get through all of the stops during the day - come back and explore them at a later date!



DETAILED ITINERARY



Time to Depart!

We recommend departing between **9:00 am and 9:30 am**. The later you leave, the less time you'll have to explore the stops!



Lighthouse Lookouts

Recommended duration: 30 - 45 minutes

Drive time to second stop: 11 minutes



Coffee & Coastlines

Recommended duration: 1 hour

Drive time to third stop: 10 minutes

**Light food options available at this stop*



Lunch & a Lighthouse

Recommended duration: 1 - 1.5 hours

Drive time to fourth stop: 15 - 30 minutes

**One food option available at this stop*



Choose Your Own Adventure

Recommended duration: 1 - 2 hours

**Multiple food options available at this stop*

Navigating the Road



When to Go

- ✓ This trip can be done on **any day throughout the year.**
- ✓ We don't recommend traveling on holidays.



Itinerary Changes

Descriptions, dates and hours may have changed since publishing the itinerary. Find out if changes have been made to your trip by heading to:

guesswheretrips.com/updates

Tip: scan below for the most updated trip!



Stay Overnight

Head to the following link for a list of recommended accommodations close to the last stop.

guesswheretrips.com/pages/hotels

**The link above will only reveal the general area where your trip will end.*



Get the Digital Version

Every road trip package includes a QR code that you can scan to get the full digital version of the trip. This is a great option if you are traveling with a group of people in multiple cars!





What to Pack:

- ☐ A vehicle with a full tank of gas
- ☐ Comfortable walking footwear / **hiking boots** for muddy trails
- ☐ Binoculars (optional)
- ☐ Sunscreen
- ☐ Bathing suit & towel
- ☐ Some form of GPS device (ie. Google Maps)
- ☐ Cell phone charging cables
- ☐ Wallet (cash/coins for parking fees and admission costs)
- ☐ Your Guess Where Trips package
- ☐ Don't forget road trip music! Head to GWT's road trip playlist on Spotify here:



Questions?

If you have any questions before your trip, please send us an email to **questions@guesswheretrips.com**. We try to get back to all email inquiries within one business day.

Please note: we are out of the office over the weekend.



Land Acknowledgement

We recognize that some of the stops listed in this trip date back to a time when not everyone was free.

As we acknowledge slavery and its impact on our history, we recognize the profound inequalities and systemic racism it has bred. This horrific institution dehumanized millions, leaving lasting social and economic consequences. Confronting these truths allows us to reflect, foster dialogue, and work towards a more just society. As you travel, we encourage you to inquire about this history, and ask sites to prominently display their history and its ongoing impact, ensuring it is neither overlooked nor diminished.



Frequently Asked Questions

How much will the stops cost?

First Stop: No fee

Second Stop: No fee

Third Stop: No fee

Fourth Stop: One suggestion requires an entrance fee (\$) and another option has paid parking (\$). We've provided several free alternatives.

**Please note: parking, gas, tolls, and food may be additional costs.*

When should we leave?

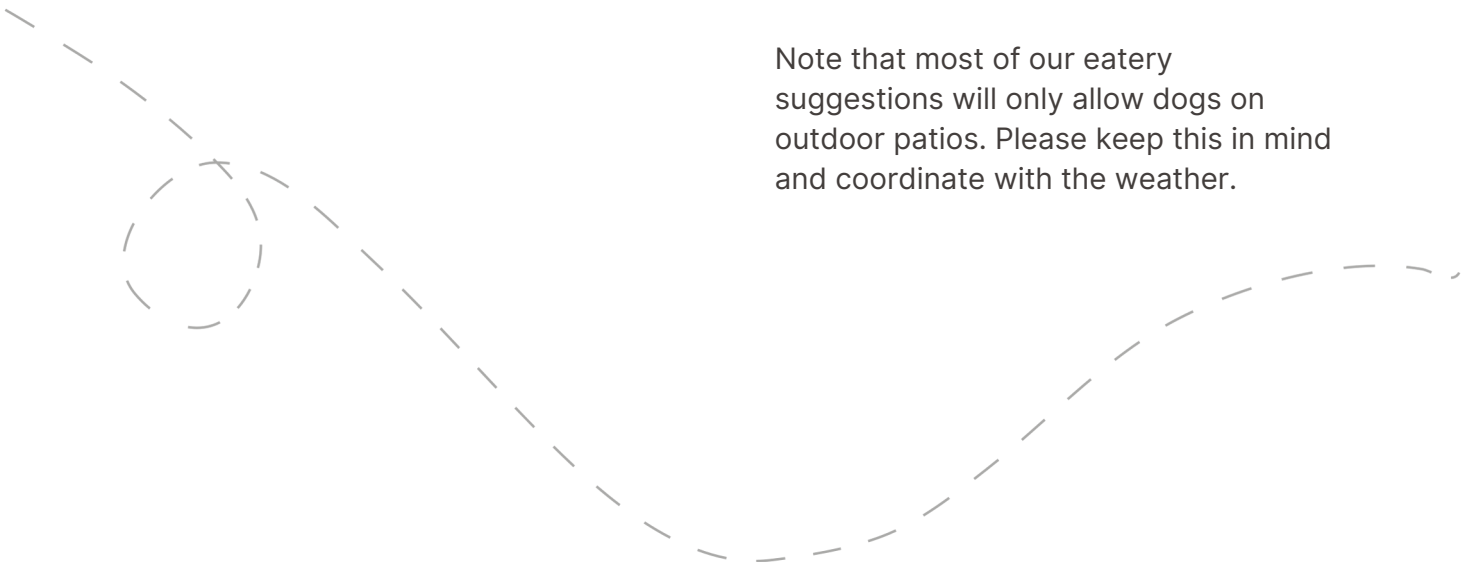
We recommend departing **between 9:00 am and 9:30 am**. The later you leave, the less time you'll have to explore all of the stops.

We recommend having a small breakfast or bite to eat before heading out, as your first food options are on stop #2.

Can I bring my dog?

This trip is **pet-friendly!** On every stop there will be at least one option that allows furry friends.

Note that most of our eatery suggestions will only allow dogs on outdoor patios. Please keep this in mind and coordinate with the weather.



How long will the total trip take?

See the approximate **round-trip driving distances/times** below. These are driving distances only and do not factor in time spent at stops.

From **Downtown LA:**

2 hours and 15 minutes / 80 miles

From **Santa Monica:**

2 hours and 10 minutes / 77 miles

From **Huntington Beach:**

2 hours and 40 minutes / 87 miles

From **Pasadena:**

2 hours and 40 minutes / 97 miles

From **Santa Clarita:**

3 hours and 5 minutes / 128 miles

From **Anaheim:**

2 hours and 25 minutes / 86 miles

From **San Bernardino*:**

4 hours / 177 miles

**We recommend booking an overnight hotel if the driving distance is greater than 4 hours round-trip.*

How many people can I bring with me?

We recommended **bringing up to 5 people** on your surprise road trip.

If you're bringing a larger group, we highly recommend having one person in charge of booking reservations at the restaurants and attractions in advance. A digital itinerary can be found in your confirmation email or on **page 5** of this booklet.

Is this wheelchair or stroller accessible?

First Stop: There are multiple accessible options on this stop.

Second Stop: There are multiple accessible options on this stop.

Third Stop: This stop is somewhat accessible.

Fourth Stop: There are multiple accessible options on this stop.



Have questions? Email us at questions@guesswheretrips.com.

Risk

Get out on the road and have fun, but please be careful. Obey all road signs, never drink and drive, and use caution and common sense at all times. The risk of injury can be significant, including the potential for permanent disability and death. While particular precautions and personal discipline will minimize this risk, the risk of personal and emotional injury, illness, physical disability, or death does exist. Guess Where Trips Inc., its owners, officers, publishers, and agents assume NO liability for your actions or activities as a result of recommendations within this guide. You agree and acknowledge that you will do some, or all, of the recommendations suggested in this book with full and complete knowledge of the risk and dangers involved, and you agree to accept and assume any and all risks of any nature whatsoever.

More information is available on our website at www.guesswheretrips.com.

The Guess Where Trips Team

A photograph of several palm trees silhouetted against a vibrant sunset sky. The sky transitions from a deep blue at the top to a warm orange and yellow near the horizon. The palm trees are of various heights and are positioned across the frame. In the foreground, there are some lower-lying plants and a few people can be seen as small silhouettes. A street lamp is visible on the right side of the image. The text "Have fun, and be safe!" is overlaid in the center in a white, serif font. Below it, the same text is repeated in a lighter, cursive font.

Have fun, and be safe!

Have fun, and be safe!



Redefining Road Trips

Copyright © 2026 Guess Where Trips Inc.®

 Share Your Trip With Us @guesswheretrips | #guesswheretrips
