



SECRETS ON THE SCENIC ROUTE

# Before You Go



A photograph of a dirt path winding through a dense forest. Large, textured tree trunks are visible on either side of the path, and the ground is covered in fallen leaves and small plants. The lighting is soft, suggesting a shaded forest environment.

“

Not to be dramatic  
but I went on one  
of your trips last  
weekend and  
it was the best day  
of my life.

-GUESS WHERE TRIPPER



# How does a surprise road trip work?



## Pick a Date

We recommend doing the trip within **6 months** of receiving this road trip. Pay close attention to the 'When To Go' within the 'Navigating the Road' section of this booklet.



## Get Ready

The only requirement is having a vehicle, GPS and a driver. The trip is completely **self-guided**, so nothing needs to be booked in advance.



## Check Updates

Before leaving, please check **travel updates** on our website. This will provide you with any major changes to the itinerary.



## Pack Your Bag

Please refer to the '**What to Pack**' list in this booklet for items we recommend bringing with you.

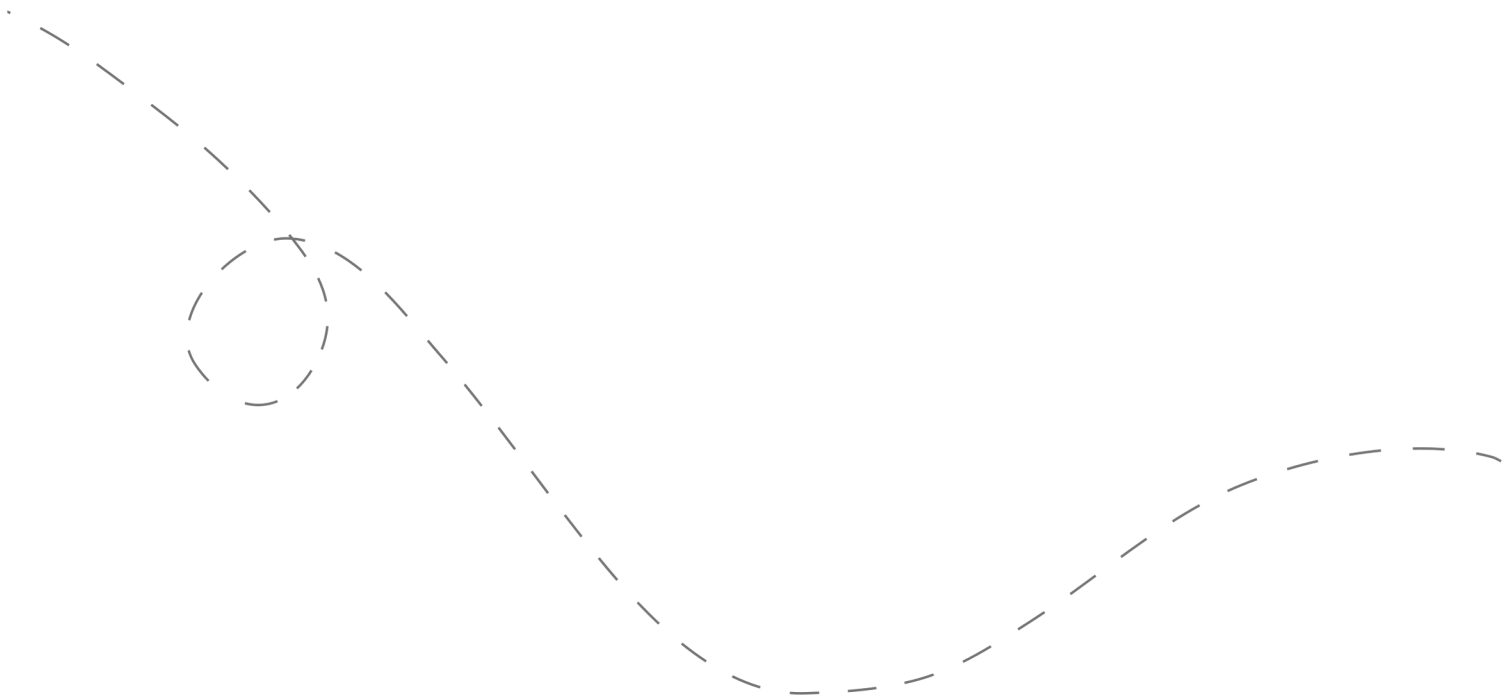


## Hit the Road!

Don't open the first envelope until you're ready to leave. Once you're finished at the first stop, you can open the second envelope. Four stops are included within your road trip.

# Your day ahead! Without giving away too many details.

We often include a variety of recommendations at each stop. You do not have to go to all of them, pick and choose what works best for you and your travel mates. If you can't get through all of the stops during the day - come back and explore them at a later date!



# DETAILED ITINERARY



## Time to Depart!

We recommend departing between **8 am - 9 am.**



## Coffee & Coastline

Recommended duration: 30 - 45 minutes

Drive time to second stop: 20 minutes

*\*Light food options available on this stop*



## See, Shop or Eat

Recommended duration: 30 - 1 hour

Drive time to third stop: 15 - 40 minutes

*\*Multiple food options available at this stop*



## Choose Your Own Adventure

Recommended duration: 1 hour - 1.5 hours

Drive time to fourth stop: 15 - 35 minutes



## Mountains of Culture

Recommended duration: Stay as long as you'd like!

*\*Multiple food options available at this stop*

# Navigating the Road



## When to Go

This itinerary can be used **any day of the week, anytime of the year**. A few of the recommended stops are closed on Monday - Wednesday; however, we pack the itinerary full of stuff – so there's always lots to see, do and eat! **Please note:** Due to closures we do not recommend travelling on statutory holidays.



## Itinerary Changes

Descriptions, dates and hours may have changed since publishing the itinerary. Find out if changes have been made to your trip by heading to:

**[guesswheretrips.com/updates](https://guesswheretrips.com/updates)**

Tip: scan below for the most updated trip!



## Stay Overnight

Head to the following link for a list of recommended accommodations close to the last stop.

**[guesswheretrips.com/pages/hotels](https://guesswheretrips.com/pages/hotels)**

*\*The link above will only reveal the general area where your trip will end.*



## Get the Digital Version

Every road trip package includes a QR code that you can scan to get the full digital version of the trip. This is a great option if you are traveling with a group of people in multiple cars!





## What to Pack:

- ☐ A vehicle with a full tank of gas
- ☐ Comfortable walking or hiking footwear
- ☐ Weather appropriate clothing/apparel
- ☐ Some form of GPS device (ie. Google Maps)
- ☐ Cell phone charging cables
- ☐ Wallet (cash/coins might be required)
- ☐ Swimsuit & towel (if it's warm enough to take a dip!)
- ☐ Your Guess Where Trips package
- ☐ Don't forget road trip music! Head to GWT's road trip playlist on Spotify here:



## About the Trip Creator

Born and raised in New Westminster but now calling Squamish home, Taryn Eyton is a hiking and adventure travel writer who loves discovering local culture close to home and around the world. For more information follow @happiestoutdoors on Instagram!



## Land Acknowledgement

We acknowledge that the land you will be travelling on is the traditional unsundered territory of the Skwxwú7mesh-ulh Tem̓xw people.

Guess Where Trips believes land acknowledgments are an important way of recognizing and expressing gratitude to the First Nations, Inuit or Métis land that was stolen from them. Please respect this land.

# Frequently Asked Questions

## How much will the stops cost?

**First Stop:** No fee

**Second Stop:** No fee

**Third Stop:** No fee

**Fourth Stop:** A few of our suggestions have entrance fees (\$), but we've provided free alternatives.

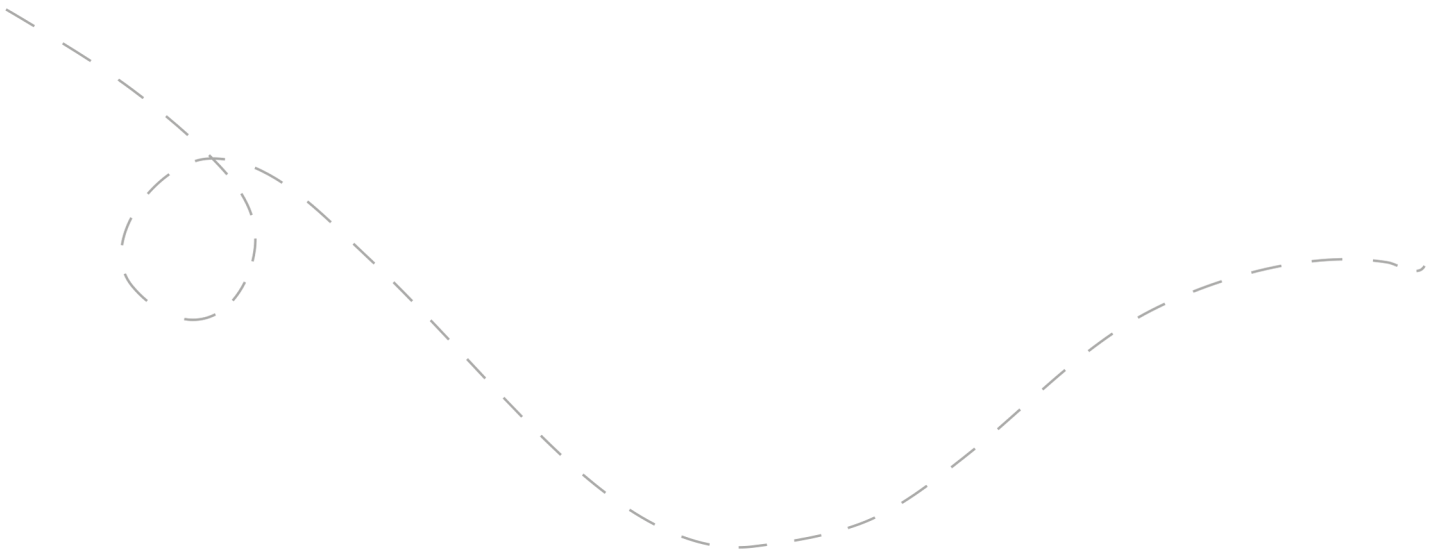
*\*Please note: gas, tolls, and food may be additional costs.*

## When should we leave?

We recommend leaving anytime between **8 am - 9 am**. The later you leave the less time you may have to complete all the stops.

## Can I bring my dog?

This trip is furry-friend friendly. Please keep your dog on a leash at all times. As you know, dogs are not allowed in any of the food spots. When in doubt, we recommend confirming pet regulations with certain locations.





## How long will the total trip take?

See the approximate round-trip driving distances/times below. These are driving distances only and do not factor in time spent at stops.

### From **North Vancouver:**

3 hours and 35 minutes / 260 km

### From **Vancouver:**

3 hours and 43 minutes / 263 km

### From **Richmond\*:**

4 hours and 37 minutes / 314 km

### From **Burnaby:**

3 hours and 51 minutes / 287 km

### From **Langley\*:**

4 hours and 45 minutes / 357 km

### From **Coquitlam\*:**

4 hours and 20 minutes / 324 km

*\*We recommend booking an overnight hotel if the driving distance is greater than 4 hours round-trip.*

## How many people can I bring with me?

We recommended **bringing up to 5 people** on your surprise road trip.

If you're bringing a larger group, we highly recommend having one person in charge of booking reservations at restaurants and attractions in advance. Please see the previous page for a copy of the digital itinerary.

## Is this wheelchair or stroller accessible?

**First Stop:** There are two accessible options at this stop.

**Second Stop:** There are multiple accessible options at this stop.

**Third Stop:** There is one accessible option at this stop.

**Fourth Stop:** There are multiple accessible options at this stop.

# Risk

Get out on the road and have fun, but please be careful. Obey all road signs, never drink and drive, and use caution and common sense at all times. The risk of injury can be significant, including the potential for permanent disability and death. While particular precautions and personal discipline will minimize this risk, the risk of personal and emotional injury, illness, physical disability, or death does exist. Guess Where Trips Inc., its owners, officers, publishers, and agents assume NO liability for your actions or activities as a result of recommendations within this guide. You agree and acknowledge that you will do some, or all, of the recommendations suggested in this book with full and complete knowledge of the risk and dangers involved, and you agree to accept and assume any and all risks of any nature whatsoever.

More information is available on our website at [www.guesswheretrips.com](http://www.guesswheretrips.com).

The Guess Where Trips Team



Have fun, and be safe!

*Have fun, and be safe!*



## Redefining Road Trips

Copyright © 2026 Guess Where Trips Inc.®

---

 Share Your Trip With Us @guesswheretrips | #guesswheretrips

---