



RIVERSIDE ROAMING

# Before You Go

A wooden boardwalk with railings winds through a dense, green forest. In the background, a river is visible through the trees. The scene is peaceful and scenic.

“

Not to be dramatic  
but I went on one  
of your trips last  
weekend and  
it was the best day  
of my life.

-GUESS WHERE TRIPPER

# How does a surprise road trip work?



## Pick a Date

We recommend doing the trip within **6 months** of receiving this road trip. Pay close attention to the 'When To Go' within the 'Navigating the Road' section of this booklet.



## Get Ready

The only requirement is having a vehicle, GPS and a driver. The trip is completely **self-guided**, so nothing needs to be booked in advance.



## Check Updates

Before leaving, please check **travel updates** on our website. This will provide you with any major changes to the itinerary.



## Pack Your Bag

Please refer to the '**What to Pack**' list in this booklet for items we recommend bringing with you.



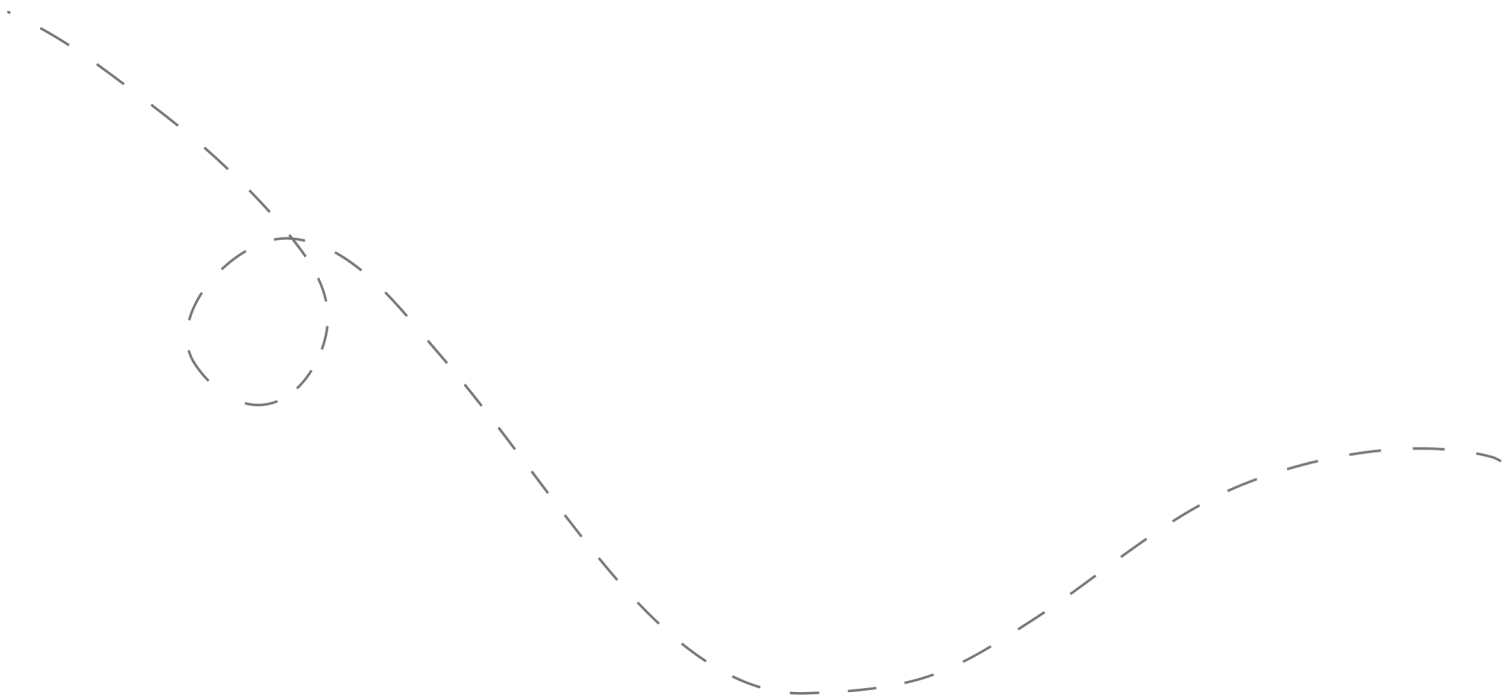
## Hit the Road!

Don't open the first envelope until you're ready to leave. Once you're finished at the first stop, you can open the second envelope. Four stops are included within your road trip.



# Your day ahead! Without giving away too many details.

We often include a variety of recommendations at each stop. You do not have to go to all of them, pick and choose what works best for you and your travel mates. If you can't get through all of the stops during the day - come back and explore them at a later date!



# DETAILED ITINERARY



## Time to Depart!

We recommend departing between **9:00 and 9:30 am**. The later you leave the less likely you are to complete all of the stops.



## European Charm

Recommended duration: 1 hour

Drive time to second stop: 16 minutes

*\*Multiple food options are available at this stop*



## Boardwalk Bliss

Recommended duration: 1 hour

Drive time to third stop: 5 minutes



## Farm Fresh

Recommended duration: 1 - 1.5 hours

Drive time to fourth stop: 15 - 25 minutes

*\*Two food options are available at this stop*



## Choose Your Own Adventure

Recommended duration: 1 - 2 hours

*\*Multiple food options are available at this stop*

# Navigating the Road



## When to Go

- ✓ This trip can be done in any season throughout the year.
- ✓ Best done **Wednesday-Sunday**. Some closures may occur on holidays. One farm option on stop #4 is open weekends only from Oct. - Apr.



## Stay Overnight

Head to the following link for a list of recommended accommodations close to the last stop.

**[guesswheretrips.com/pages/hotels](https://www.guesswheretrips.com/pages/hotels)**

*\*The link above will only reveal the general area where your trip will end.*



## Itinerary Changes

Descriptions, dates and hours may have changed since publishing the itinerary. Find out if changes have been made to your trip by heading to:

**[guesswheretrips.com/updates](https://www.guesswheretrips.com/updates)**

Tip: Scan below for the most updated trip!



## Get the Digital Version

Every road trip package includes a QR code that you can scan to get the full digital version of the trip. This is a great option if you are traveling with a group of people in multiple cars!





## What to Pack:

- ☐ A vehicle with a full tank of gas
- ☐ Comfortable walking footwear
- ☐ Sunscreen & bug spray (summer)
- ☐ Warm clothes & layers (winter)
- ☐ Some form of GPS device  
(ie. Google Maps)
- ☐ Wallet (cash may be required)
- ☐ **Bird seed** (for an optional trail)
- ☐ Your Guess Where Trips package
- ☐ Download the **AllTrails app** and  
create a free account (optional)
- ☐ Cell phone charging cables
- ☐ An HCA parking pass (optional)
- ☐ A cooler for fresh goodies you  
might purchase along the way
- ☐ Don't forget road trip music! Head  
to GWT's road trip playlist on  
Spotify here:



## About the Trip Creator

Anastasia blogs all the fun outdoor spaces and events from the GTA to Niagara Falls and everywhere in between. She brings her family along for the memories and reports back on the best places to visit and all the essentials to take the stress out of planning for your family. Find out more by following her on Instagram @busymamaco and by checking her blog.



## Land Acknowledgement

We acknowledge that the land you will be travelling on is the traditional unsundered territory of the Mississauga and Haudenosaunee peoples.

Guess Where Trips believes land acknowledgments are an important way of recognizing and expressing gratitude to the First Nations, Inuit or Métis land that was stolen from them. Please respect this land.

# Frequently Asked Questions

## How much will the stops cost?

**First Stop:** Small parking fees may apply.

**Second Stop:** No fee

**Third Stop:** No fee

**Fourth Stop:** One option will have street parking fees. Another for GTA travellers has a parking fee to visit (\$).

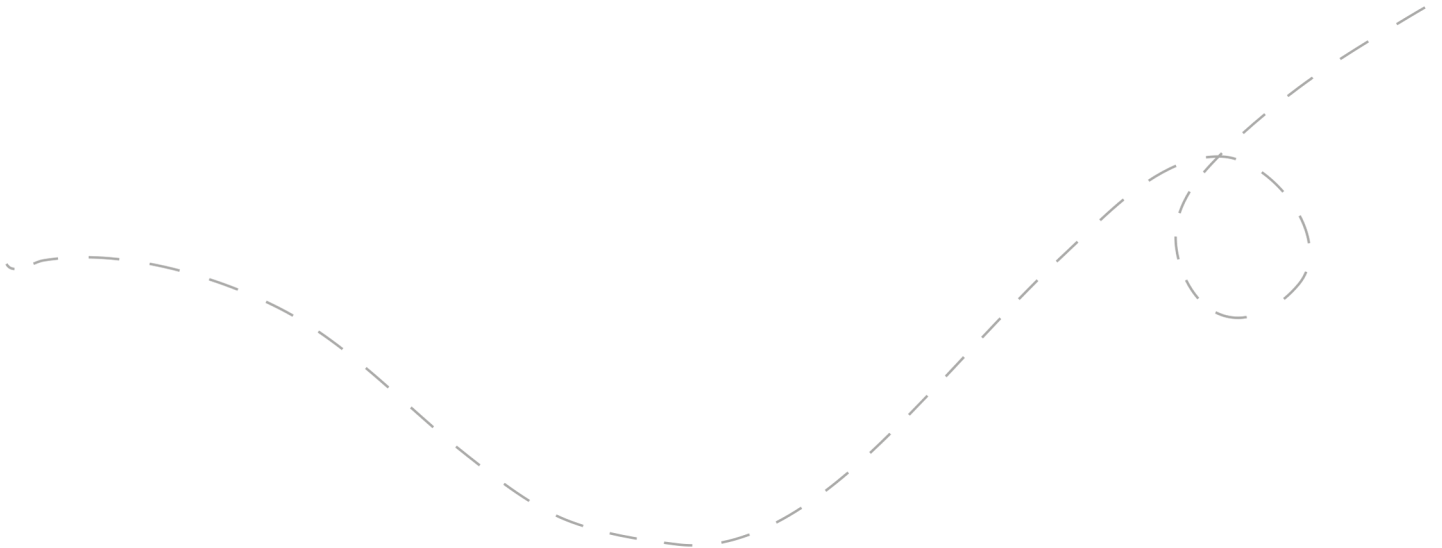
*\*Please note: gas, tolls, and food may be additional costs.*

## When should we leave?

We recommend departing between **9:00 and 9:30 am**. The later you leave the less time you may have to complete all of the stops.

## Can I bring my dog?

Unfortunately this trip is best done without your furry friend.





## How long will the total trip take?

See the approximate **round-trip driving distances/times** below. These are driving distances only and do not factor in time spent at stops.

From **Toronto:**

3 hours and 12 minutes / 142 km

From **Oakville:**

2 hours and 20 minutes / 171 km

From **Hamilton:**

1 hour and 54 minutes / 123 km

From **Kitchener:**

1 hour and 43 minutes / 92 km

From **London:**

2 hours and 50 minutes / 216 km

From **Pickering:**

3 hours and 46 minutes / 301 km

From **Newmarket:**

3 hours and 53 minutes / 309 km

*\*We recommend booking an overnight hotel if the driving distance is greater than 4 hours round-trip.*

## How many people can I bring with me?

We recommended **bringing up to 5 people** on your surprise road trip.

If you're bringing a larger group, we highly recommend having one person in charge of booking reservations at restaurants and attractions in advance. Please see the previous page for a copy of the digital itinerary.

## Is this wheelchair or stroller accessible?

**First Stop:** There are multiple accessible options at this stop.

**Second Stop:** This stop is somewhat accessible.

**Third Stop:** There is one accessible option on this stop.

**Fourth Stop:** There are multiple accessible options at this stop.



Have questions? Email us at [questions@guesswheretrips.com](mailto:questions@guesswheretrips.com).

---

# Risk

Get out on the road and have fun, but please be careful. Obey all road signs, never drink and drive, and use caution and common sense at all times. The risk of injury can be significant, including the potential for permanent disability and death. While particular precautions and personal discipline will minimize this risk, the risk of personal and emotional injury, illness, physical disability, or death does exist. Guess Where Trips Inc., its owners, officers, publishers, and agents assume NO liability for your actions or activities as a result of recommendations within this guide. You agree and acknowledge that you will do some, or all, of the recommendations suggested in this book with full and complete knowledge of the risk and dangers involved, and you agree to accept and assume any and all risks of any nature whatsoever.

More information is available on our website at [www.guesswheretrips.com](http://www.guesswheretrips.com).

The Guess Where Trips Team



Have fun, and be safe!

*Have fun, and be safe!*



## Redefining Road Trips

Copyright © 2026 Guess Where Trips Inc.®

---

 Share Your Trip With Us @guesswheretrips | #guesswheretrips

---