



OUTDOOR ADVENTURES & SCENIC ROADS

# Before You Go





“

This trip was full of  
so many interesting  
destinations! We ate  
well, did a few short  
hikes & took so  
many photos!

-GUESS WHERE TRIPPER



# How does a surprise road trip work?



## Pick a Date

We recommend doing the trip within **6 months** of receiving this road trip. Pay close attention to the 'When To Go' within the 'Navigating the Road' section of this booklet.



## Get Ready

The only requirement is having a vehicle, GPS and a driver. The trip is completely **self-guided**, so nothing needs to be booked in advance.



## Check Updates

Before leaving, please check **travel updates** on our website. This will provide you with any major changes to the itinerary.



## Pack Your Bag

Please refer to the '**What to Pack**' list in this booklet for items we recommend bringing with you.

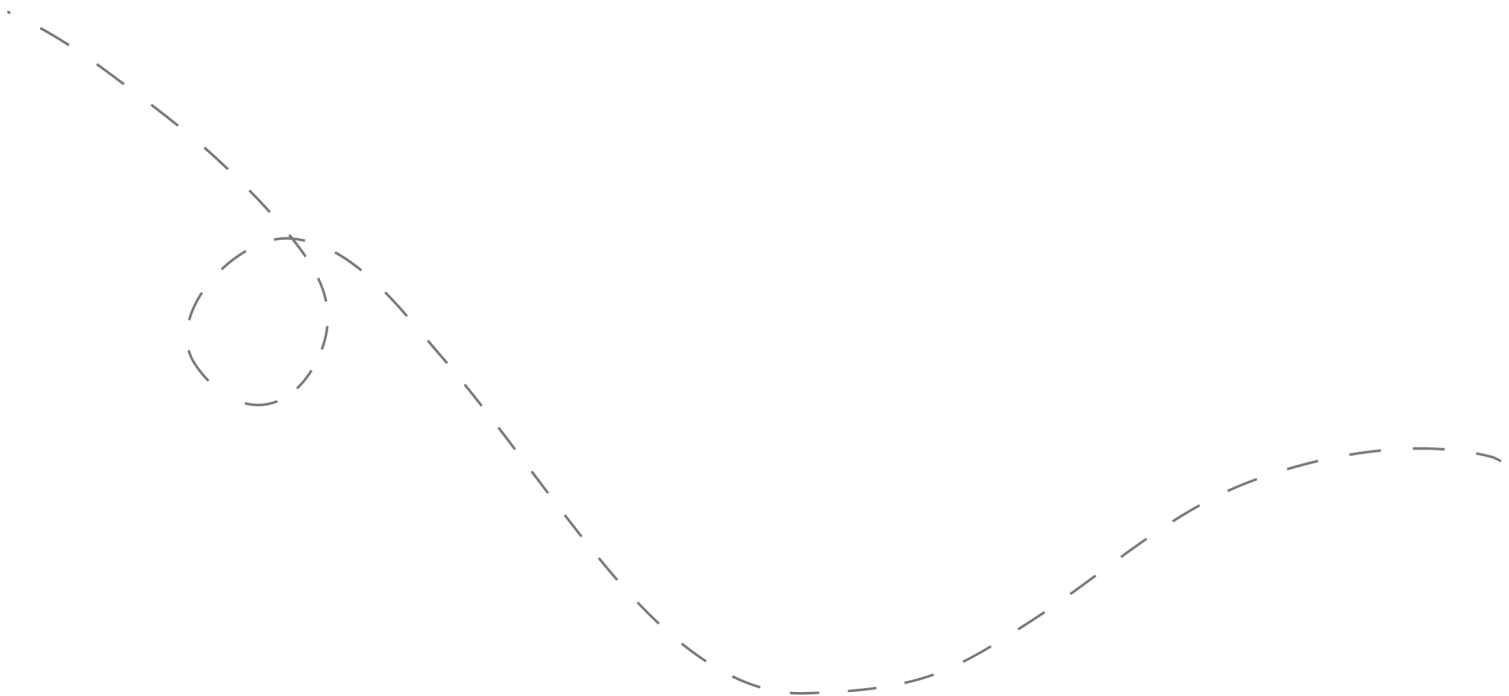


## Hit the Road!

Don't open the first envelope until you're ready to leave. Once you're finished at the first stop, you can open the second envelope. Four stops are included within your road trip.

# Your day ahead! Without giving away too many details.

We often include a variety of recommendations at each stop. You do not have to go to all of them, pick and choose what works best for you and your travel mates. If you can't get through all of the stops during the day - come back and explore them at a later date!



# DETAILED ITINERARY



## Time to Depart!

We recommend departing between **8:00 am and 9:00 am.**



## A Town with a Story

Recommended duration: 1 hour

Drive time to second stop: 25 minutes

*\*Light food options are available at this stop*



## An Easy Adventure

Recommended duration: 30 - 45 minutes

Drive time to third stop: 21 minutes



## Scenic Drives & a Small Town

Recommended duration: 1 hour

Drive time to fourth stop: 15 minutes

*\*Multiple food options are available at this stop*



## Choose Your Own Adventure

Recommended duration: 1 -2 hours

*\*Multiple food options are available at this stop*

# Navigating the Road



## When to Go

- ✓ This trip can be done in **any season throughout the year.**
- ✓ Best done **Wednesday - Saturday.** Tuesday & Sunday are possible, but there will be some closures. We do not recommend travelling on a Monday or on holidays.



## Stay Overnight

Head to the following link for a list of recommended accommodations close to the last stop.

**[guesswheretrips.com/pages/hotels](https://www.guesswheretrips.com/pages/hotels)**

*\*The link above will only reveal the general area where your trip will end.*



## Itinerary Changes

Descriptions, dates and hours may have changed since publishing the itinerary. Find out if changes have been made to your trip by heading to:

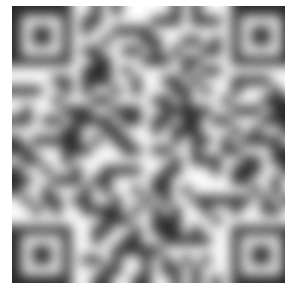
**[guesswheretrips.com/updates](https://www.guesswheretrips.com/updates)**

Tip: scan below for the most updated trip!



## Get the Digital Version

Every road trip package includes a QR code that you can scan to get the full digital version of the trip. This is a great option if you are traveling with a group of people in multiple cars!





## What to Pack:

- ☐ A vehicle with a full tank of gas
- ☐ Comfortable walking or hiking footwear
- ☐ Weather appropriate clothing/apparel
- ☐ Some form of GPS device (ie. Google Maps)
- ☐ Cooler & ice packs (for any goodies you pick up!)
- ☐ Cell phone charging cables
- ☐ Wallet (cash/coins might be required)
- ☐ Your Guess Where Trips package
- ☐ Don't forget road trip music! Head to GWT's road trip playlist on Spotify here:



## About the Trip Creator

Jessica Off has been planning road trip itineraries around the world for the last 14 years. She's always been obsessed with connecting the dots of the unexpected and is excited to continue doing so with Guess Where Trips.



## Land Acknowledgement

We acknowledge that the land you will be travelling on is the traditional unsundered territory of the Wendake-Nionwentsio and Mississauga people.

Guess Where Trips believes land acknowledgments are an important way of recognizing and expressing gratitude to the First Nations, Inuit or Métis land that was stolen from them. Please respect this land.



Have questions? Email us at [questions@guesswheretrips.com](mailto:questions@guesswheretrips.com).

# Frequently Asked Questions

## How much will the stops cost?

**First Stop:** No fee

**Second Stop:** No fee

**Third Stop:** No fee

**Fourth Stop:** One optional suggestion requires an entrance fee (\$). Alternative free options are available.

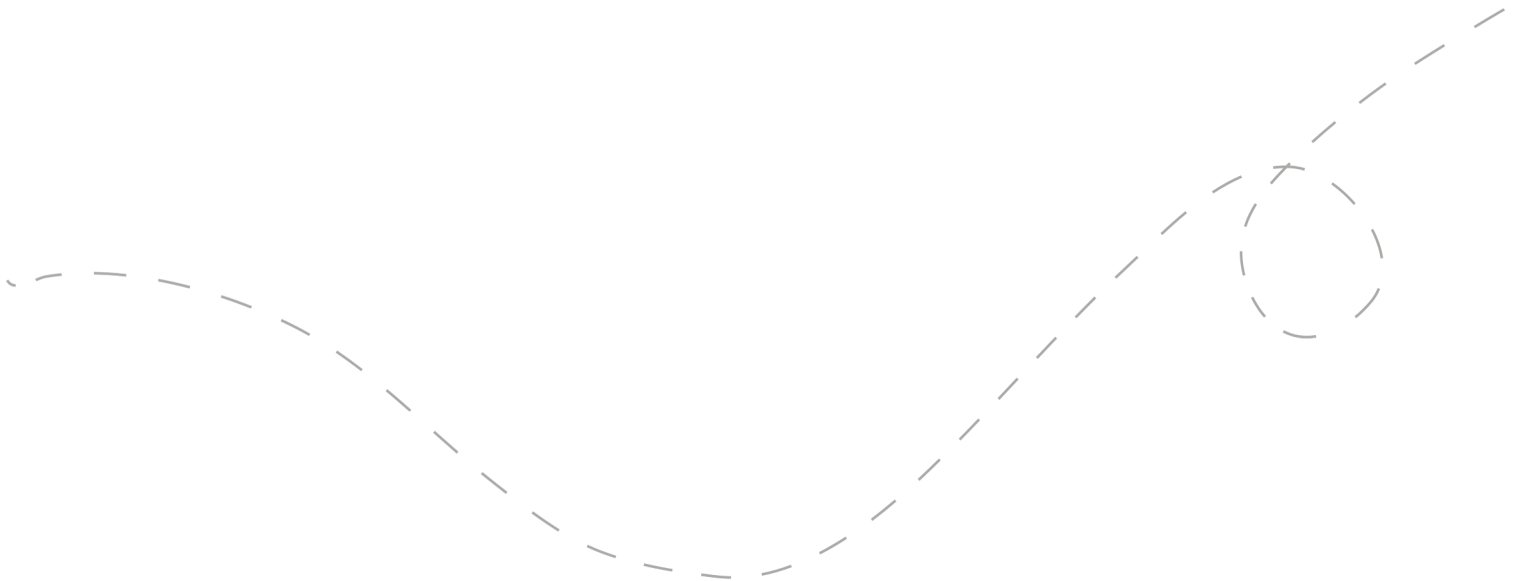
*\*Please note: gas, tolls, and food may be additional costs.*

## When should we leave?

We recommend leaving anytime between **8 am and 9 am**. The later you leave, the less time you may have to complete all of the stops.

## Can I bring my dog?

This trip is pet-friendly! Please keep your dog on a leash at all times. When in doubt, we recommend confirming pet regulations with certain locations.





## How long will the total trip take?

See the approximate **round-trip driving distances/times** below. These are driving distances only and do not factor in time spent at stops.

From **Peterborough:**

2 hours and 27 minutes / 171 km

From **Pickering:**

3 hours / 280 km

From **Kingston\*:**

4 hours and 7 minutes / 355 km

From **Downtown Toronto\*:**

4 hours and 15 minutes / 355 km

From **Oakville/Burlington\*:**

4 hours and 40 minutes / 430 km

*\*We recommend booking an overnight hotel if the driving distance is greater than 4 hours round-trip.*

## How many people can I bring with me?

We recommended **bringing up to 5 people** on your surprise road trip.

If you're bringing a larger group, we highly recommend having one person in charge of booking reservations at restaurants and attractions in advance. Please see the previous page for a copy of the digital itinerary.

## Is this wheelchair or stroller accessible?

**First Stop:** There are multiple accessible options on this stop.

**Second Stop:** There are multiple accessible options on this stop.

**Third Stop:** The entire stop is accessible.

**Fourth Stop:** There are multiple accessible options on this stop.

# Risk

Get out on the road and have fun, but please be careful. Obey all road signs, never drink and drive, and use caution and common sense at all times. The risk of injury can be significant, including the potential for permanent disability and death. While particular precautions and personal discipline will minimize this risk, the risk of personal and emotional injury, illness, physical disability, or death does exist. Guess Where Trips Inc., its owners, officers, publishers, and agents assume NO liability for your actions or activities as a result of recommendations within this guide. You agree and acknowledge that you will do some, or all, of the recommendations suggested in this book with full and complete knowledge of the risk and dangers involved, and you agree to accept and assume any and all risks of any nature whatsoever.

More information is available on our website at [www.guesswheretrips.com](http://www.guesswheretrips.com).

The Guess Where Trips Team



Have fun, and be safe!

*Have fun, and be safe!*



## Redefining Road Trips

Copyright © 2026 Guess Where Trips Inc.®

---

 Share Your Trip With Us @guesswheretrips | #guesswheretrips

---