



LOCAL MARKETS & PICTURESQUE TOWNS

Before You Go

A stone arch bridge spans a river, surrounded by trees. The image is dark and moody, with the bridge's arches and the surrounding foliage visible. The text is overlaid on the left side of the image.

“

Not to be dramatic
but I went on one
of your trips last
weekend and
it was the best day
of my life.

-GUESS WHERE TRIPPER

How does a surprise road trip work?



Pick a Date

We recommend doing the trip within **6 months** of receiving this road trip. Pay close attention to the 'When To Go' within the 'Navigating the Road' section of this booklet.



Get Ready

The only requirement is having a vehicle, GPS and a driver. The trip is completely **self-guided**, so nothing needs to be booked in advance.



Check Updates

Before leaving, please check **travel updates** on our website. This will provide you with any major changes to the itinerary.



Pack Your Bag

Please refer to the '**What to Pack**' list in this booklet for items we recommend bringing with you.

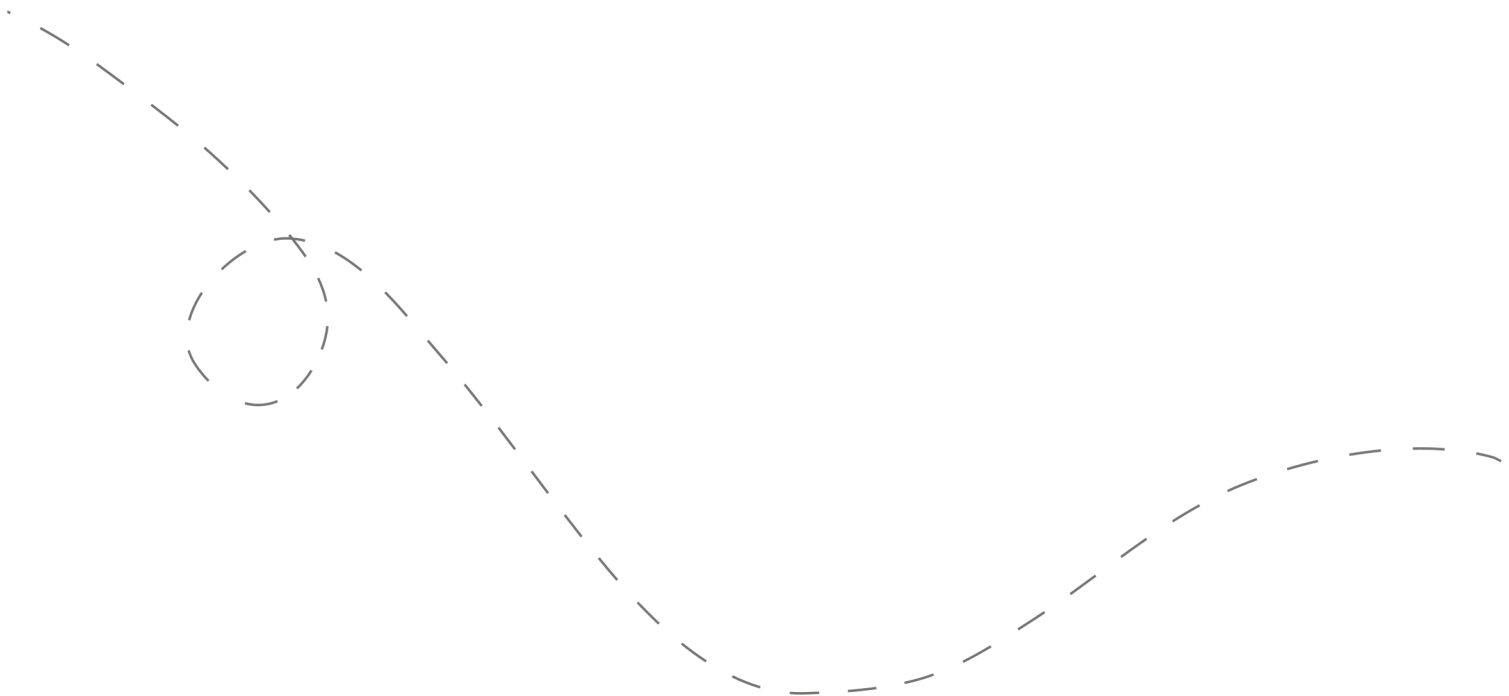


Hit the Road!

Don't open the first envelope until you're ready to leave. Once you're finished at the first stop, you can open the second envelope. Four stops are included within your road trip.

Your day ahead! Without giving away too many details.

We often include a variety of recommendations at each stop. You do not have to go to all of them; pick and choose what works best for you and your travel mates. If you can't get through all of the stops during the day - come back and explore them at a later date!



DETAILED ITINERARY



Time to Depart!

We recommend departing between **8:00 - 9:00 am**. The later you leave, the less time you'll have to explore all of the stops.



Travel Back In Time

Recommended duration: 30 minutes - 1 hour
Drive time to second stop: 15 minutes

**Light food options are available at this stop*



A Romantic Landmark

Recommended duration: 20 minutes
Drive time to third stop: 25 minutes

**One farm market and one variety store are available on this stop*



Ontario's Most Beautiful Village

Recommended duration: 1-2 hours
Drive time to fourth stop: 10 minutes

**Multiple food options are available at this stop*



A Scenic Street

Recommended duration: 1 hour

**Multiple food options are available at this stop*

Navigating the Road



When to Go

- ✓ This trip can be done **Wednesday to Saturday throughout the year**. We do not recommend travelling between Sunday - Tuesday.
- ✓ We highly **recommend going on a Thursday or Saturday** to make the most of this trip!



Stay Overnight

Head to the following link for a list of recommended accommodations close to the last stop.

[guesswheretrips.com/pages/hotels](https://www.guesswheretrips.com/pages/hotels)

**The link above will only reveal the general area where your trip will end.*



Itinerary Changes

Descriptions, dates and hours may have changed since publishing the itinerary. Find out if changes have been made to your trip by heading to:

[guesswheretrips.com/updates](https://www.guesswheretrips.com/updates)

Tip: scan below for the most updated trip!



Get the Digital Version

Every road trip package includes a QR code that you can scan to get the full digital version of the trip. This is a great option if you are traveling with a group of people in multiple cars!





What to Pack:

- ☐ A vehicle with a full tank of gas
- ☐ Comfortable walking footwear
- ☐ Warm clothes & layers (winter)
- ☐ Sunscreen & bug spray (summer)
- ☐ Some form of GPS device
(ie. Google Maps)
- ☐ Wallet (some cash-only stops)
- ☐ Cell phone charging cables
- ☐ **An ice pack and cooler** (for all
the goodies you'll pick up)
- ☐ Your Guess Where Trips package
- ☐ Don't forget road trip music! Head
to GWT's road trip playlist on
Spotify here:



About the Trip Creator

Jessica Off has been planning road trip itineraries around the world for the last 14 years. She's always been obsessed with connecting the dots of the unexpected and is excited to continue doing so with Guess Where Trips.



Land Acknowledgement

We acknowledge that the land you will be travelling on is the traditional unsundered territory of the Anishinabewaki and Mississaugas of the Credit First Nation people.

Guess Where Trips believes land acknowledgments are an important way of recognizing and expressing gratitude to the First Nations, Inuit or Métis land that was stolen from them. Please respect this land.

Frequently Asked Questions

How much will the stops cost?

First Stop: No fee

Second Stop: No fee

Third Stop: No fee

Fourth Stop: One "on the way" recommendation is by donation (\$).

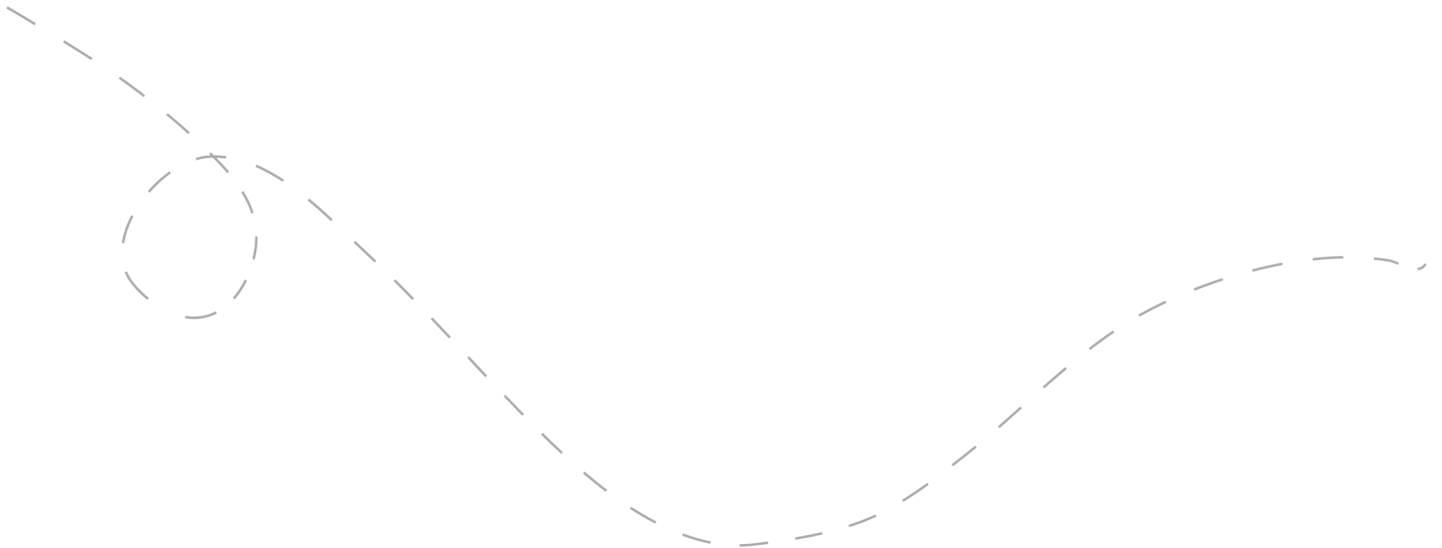
**Please note: gas, tolls, and food may be additional costs.*

When should we leave?

We recommend leaving anytime between **8:00 and 9:00 am**. The later you leave, the less time you may have to complete all of the stops.

Can I bring my dog?

Unfortunately, this trip is not dog friendly. You will have to leave your furry friend at home for the day.



How long will the total trip take?

See the approximate **round-trip driving distances/times** below. These are driving distances only and do not factor in time spent at stops.

From **Downtown Toronto:**

3 hours and 30 minutes / 265 km

From **Oakville/Burlington:**

2 hours and 35 minutes / 216 km

From **Hamilton:**

2 hours and 29 minutes / 177 km

From **Kitchener/Waterloo:**

1 hour and 15 minutes / 70 km

From **Barrie:**

3 hours and 50 minutes / 335 km

From **London:**

3 hours and 33 minutes / 296 km

**We recommend booking an overnight hotel if the driving distance is greater than 4 hours round-trip.*

How many people can I bring with me?

We recommended **bringing up to 5 people** on your surprise road trip.

If you're bringing a larger group, we highly recommend having one person in charge of booking reservations at restaurants and attractions in advance. Please see the previous page for a copy of the digital itinerary.

Is this wheelchair or stroller accessible?

First Stop: There are multiple accessible options on this stop.

Second Stop: The main stop is accessible. Optional suggestions are only somewhat accessible.

Third Stop: There are multiple accessible options on this stop.

Fourth Stop: There are multiple accessible options on this stop.



Have questions? Email us at questions@guesswheretrips.com.

Risk

Get out on the road and have fun, but please be careful. Obey all road signs, never drink and drive, and use caution and common sense at all times. The risk of injury can be significant, including the potential for permanent disability and death. While particular precautions and personal discipline will minimize this risk, the risk of personal and emotional injury, illness, physical disability, or death does exist. Guess Where Trips Inc., its owners, officers, publishers, and agents assume NO liability for your actions or activities as a result of recommendations within this guide. You agree and acknowledge that you will do some, or all, of the recommendations suggested in this book with full and complete knowledge of the risk and dangers involved, and you agree to accept and assume any and all risks of any nature whatsoever.

More information is available on our website at www.guesswheretrips.com.

The Guess Where Trips Team



Have fun, and be safe!

Have fun, and be safe!



Redefining Road Trips

Copyright © 2026 Guess Where Trips Inc.®

 Share Your Trip With Us @guesswheretrips | #guesswheretrips
