



FUNKY FLORALS & FINE WINES

# Before You Go

A top-down view of a group of people having a picnic on a white, textured blanket. In the center, there are several large, clear glass wine glasses filled with a golden liquid, likely white wine. Surrounding the glasses are various fruits, including clusters of green and purple grapes, yellow lemons, and red apples. A small white bowl filled with dark olives is also visible. The people are wearing casual summer clothing like shorts and t-shirts. The overall atmosphere is relaxed and social.

“

Guaranteed fun  
and the best part is  
you don't have to  
plan a thing! A day  
filled with surprises  
and many local  
treasures.

-GUESS WHERE TRIPPER

# How does a surprise road trip work?



## Pick a Date

We recommend doing the trip within **6 months** of receiving this road trip. Pay close attention to the 'When To Go' within the 'Navigating the Road' section of this booklet.



## Get Ready

The only requirement is having a vehicle, GPS and a driver. The trip is completely **self-guided**, so nothing needs to be booked in advance.



## Check Updates

Before leaving, please check **travel updates** on our website. This will provide you with any major changes to the itinerary.



## Pack Your Bag

Please refer to the '**What to Pack**' list in this booklet for items we recommend bringing with you.

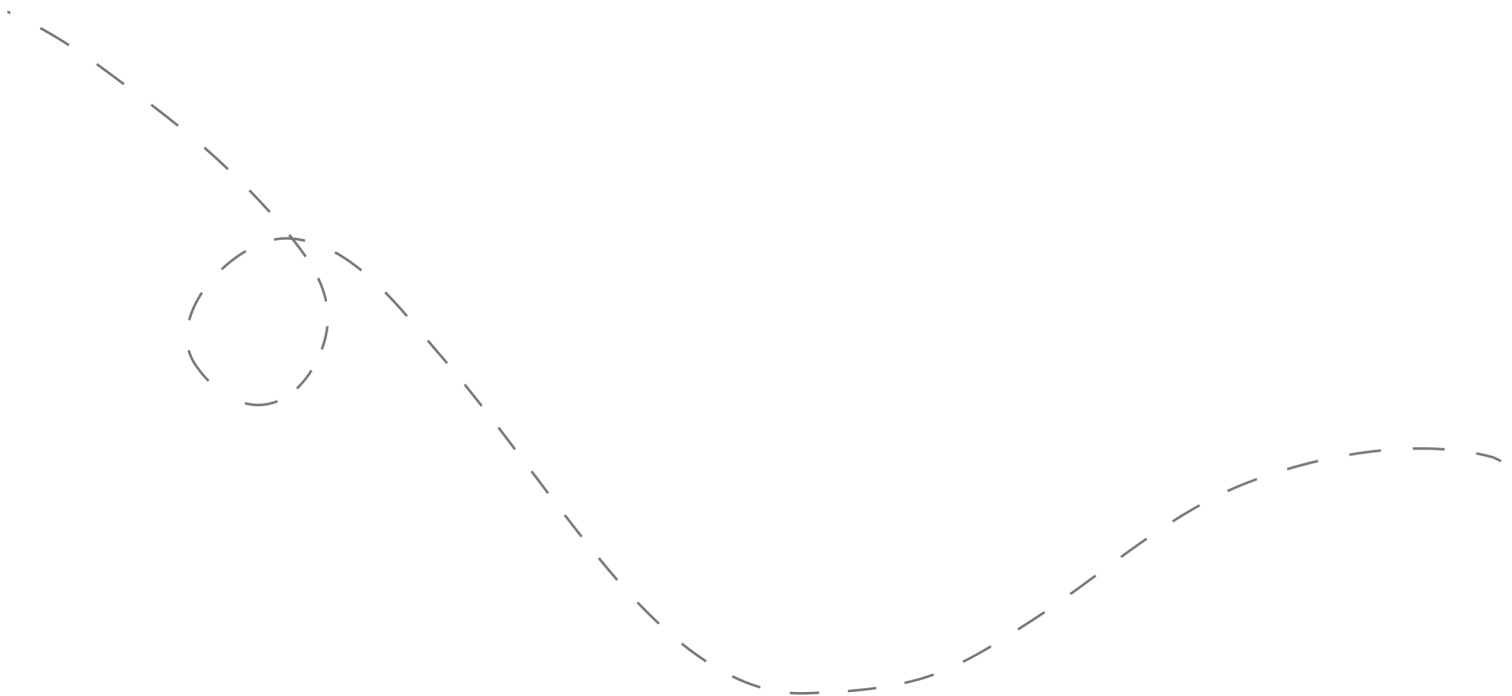


## Hit the Road!

Don't open the first envelope until you're ready to leave. Once you're finished at the first stop, you can open the second envelope. Four stops are included within your road trip.

# Your day ahead! Without giving away too many details.

We often include a variety of recommendations at each stop. You do not have to go to all of them, pick and choose what works best for you and your travel mates. If you can't get through all of the stops during the day - come back and explore them at a later date!



# DETAILED ITINERARY



## Time to Depart!

We recommend departing between **8:00 am - 9:00 am**. The later you leave, the less time you'll have to explore all of the stops.



## A Floral Wonderland

Recommended duration: 30 minutes - 1 hour

Drive time to second stop: 5 minutes

*\*Food options are available at this stop*



## Wine, Food & Art

Recommended duration: 1 hour

Drive time to third stop: 25 minutes

*\*Food options are available at this stop*



## Choose Your Own Adventure

Recommended duration: 30 minutes - 1 hour

Drive time to fourth stop: 20 minutes



## The Cutest Canadian Town

Recommended duration: 1 - 2 hours

*\*Multiple food options are available at this stop*



# Navigating the Road



## When to Go

- ✓ This trip can be done in **any season** throughout the year.
- ✓ Best done **Thursday-Monday**. Some closures may occur on holidays.



## Itinerary Changes

Descriptions, dates and hours may have changed since publishing the itinerary. Find out if changes have been made to your trip by heading to:

**[guesswheretrips.com/updates](https://guesswheretrips.com/updates)**

Tip: scan below for the most updated trip!



## Stay Overnight

Head to the following link for a list of recommended accommodations close to the last stop.

**[guesswheretrips.com/pages/hotels](https://guesswheretrips.com/pages/hotels)**

*\*The link above will only reveal the general area where your trip will end.*



## Get the Digital Version

Every road trip package includes a QR code that you can scan to get the full digital version of the trip. This is a great option if you are traveling with a group of people in multiple cars!





## What to Pack:

- ☐ A vehicle with a full tank of gas
- ☐ Comfortable walking footwear
- ☐ Warm clothes & layers (winter)
- ☐ Some form of GPS device (ie. Google Maps)
- ☐ As this trip has a few winery stops, we recommend having someone as your **designated driver for the day.**
- ☐ Wallet (cash may be required)
- ☐ Your Guess Where Trips package
- ☐ Cell phone charging cables
- ☐ Don't forget road trip music! Head to GWT's road trip playlist on Spotify here:



## About the Trip Creator

Jessica Off has been planning road trip itineraries around the world for the last 14 years. She's always been obsessed with connecting the dots of the unexpected and is excited to continue doing so with Guess Where Trips.



## Land Acknowledgement

We acknowledge that the land you will be travelling on is the traditional unsundered territory of the Wenrohronon people.

Guess Where Trips believes land acknowledgments are an important way of recognizing and expressing gratitude to the First Nations, Inuit or Métis land that was stolen from them. Please respect this land.

# Frequently Asked Questions

## How much will the stops cost?

**First Stop:** No fee

**Second Stop:** One optional stop requires an entrance fee (\$). We've provided several free alternatives.

**Third Stop:** We've provided many options here ranging from free to \$18/person, plus parking fees.

**Fourth Stop:** Parking fees may apply.

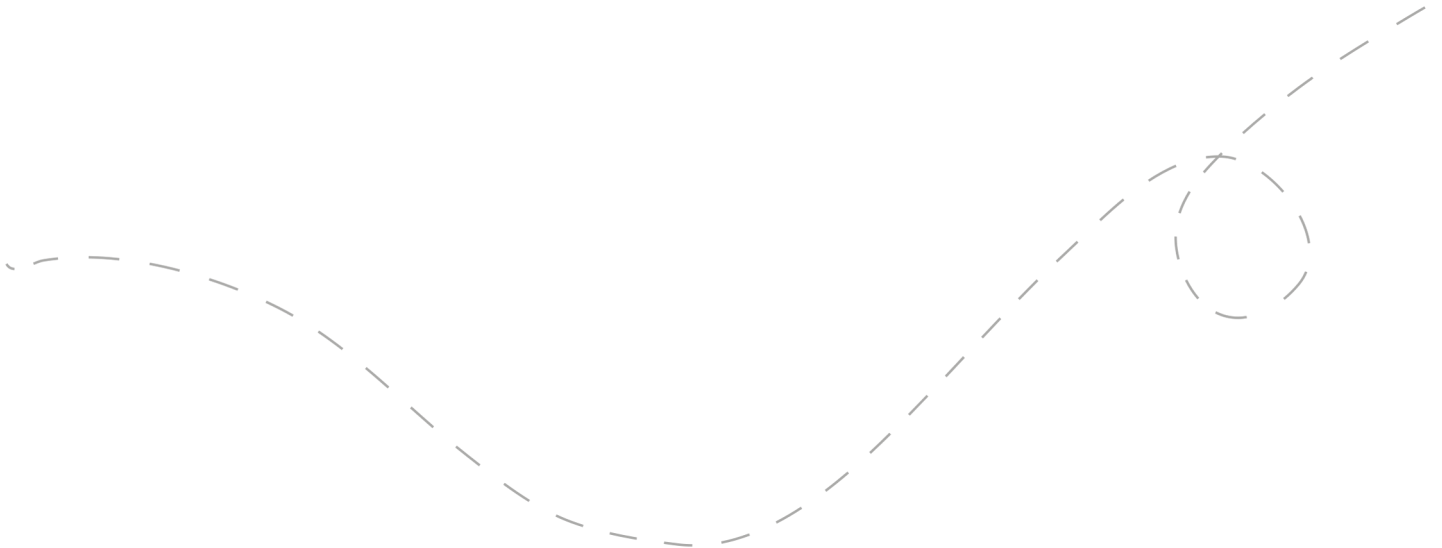
*\*Please note: gas, tolls, and food may be additional costs.*

## When should we leave?

We recommend leaving anytime between **8 am - 9 am**. The later you leave, the less time you may have to complete all of the stops.

## Can I bring my dog?

Unfortunately, this trip is not pet-friendly. We have other trips available where you can bring your dog.





## How long will the total trip take?

See the approximate **round-trip driving distances/times** below. These are driving distances only and do not factor in time spent at stops.

From **Downtown Toronto:**

3 hours and 35 minutes / 288 km

From **Oakville:**

2 hours and 45 minutes / 216 km

From **Hamilton:**

2 hours and 35 minutes / 190 km

From **Kitchener:**

3 hours and 55 minutes / 311 km

From **Pickering\*:**

4 hours / 365 km

From **Barrie\*:**

5 hours and 50 minutes / 450 km

From **London\*:**

4 hours and 55 minutes / 435 km

*\*We recommend booking an overnight hotel if the driving distance is greater than 4 hours round-trip.*

## How many people can I bring with me?

We recommended **bringing up to 5 people** on your surprise road trip.

If you're bringing a larger group, we highly recommend having one person in charge of booking reservations at restaurants and attractions in advance. Please see the previous page for a copy of the digital itinerary.

## Is this wheelchair or stroller accessible?

**First Stop:** This stop is entirely wheelchair accessible.

**Second Stop:** This stop is entirely wheelchair accessible.

**Third Stop:** There are multiple accessible options on this stop.

**Fourth Stop:** There are multiple accessible options on this stop.



Have questions? Email us at [questions@guesswheretrips.com](mailto:questions@guesswheretrips.com).

---

# Risk

Get out on the road and have fun, but please be careful. Obey all road signs, never drink and drive, and use caution and common sense at all times. The risk of injury can be significant, including the potential for permanent disability and death. While particular precautions and personal discipline will minimize this risk, the risk of personal and emotional injury, illness, physical disability, or death does exist. Guess Where Trips Inc., its owners, officers, publishers, and agents assume NO liability for your actions or activities as a result of recommendations within this guide. You agree and acknowledge that you will do some, or all, of the recommendations suggested in this book with full and complete knowledge of the risk and dangers involved, and you agree to accept and assume any and all risks of any nature whatsoever.

More information is available on our website at [www.guesswheretrips.com](http://www.guesswheretrips.com).

The Guess Where Trips Team



Have fun, and be safe!

*Have fun, and be safe!*



## Redefining Road Trips

Copyright © 2026 Guess Where Trips Inc.®

---

 Share Your Trip With Us @guesswheretrips | #guesswheretrips

---