



ESCAPE TO NATURE

Before You Go

A person is seen from behind, walking away on a dirt path through a forest. They are wearing a tan beanie, an orange jacket, and a grey quilted backpack. A silver water bottle is attached to the side of the backpack. The forest has tall trees and a ground covered in fallen leaves.

“

Not to be dramatic
but I went on one
of your trips last
weekend and
it was the best day
of my life.

-GUESS WHERE TRIPPER

How does a surprise road trip work?



Pick a Date

We recommend doing the trip within **6 months** of receiving this road trip. Pay close attention to the 'When To Go' within the 'Navigating the Road' section of this booklet.



Get Ready

The only requirement is having a vehicle, GPS and a driver. The trip is completely **self-guided**, so nothing needs to be booked in advance.



Check Updates

Before leaving, please check **travel updates** on our website. This will provide you with any major changes to the itinerary.



Pack Your Bag

Please refer to the '**What to Pack**' list in this booklet for items we recommend bringing with you.

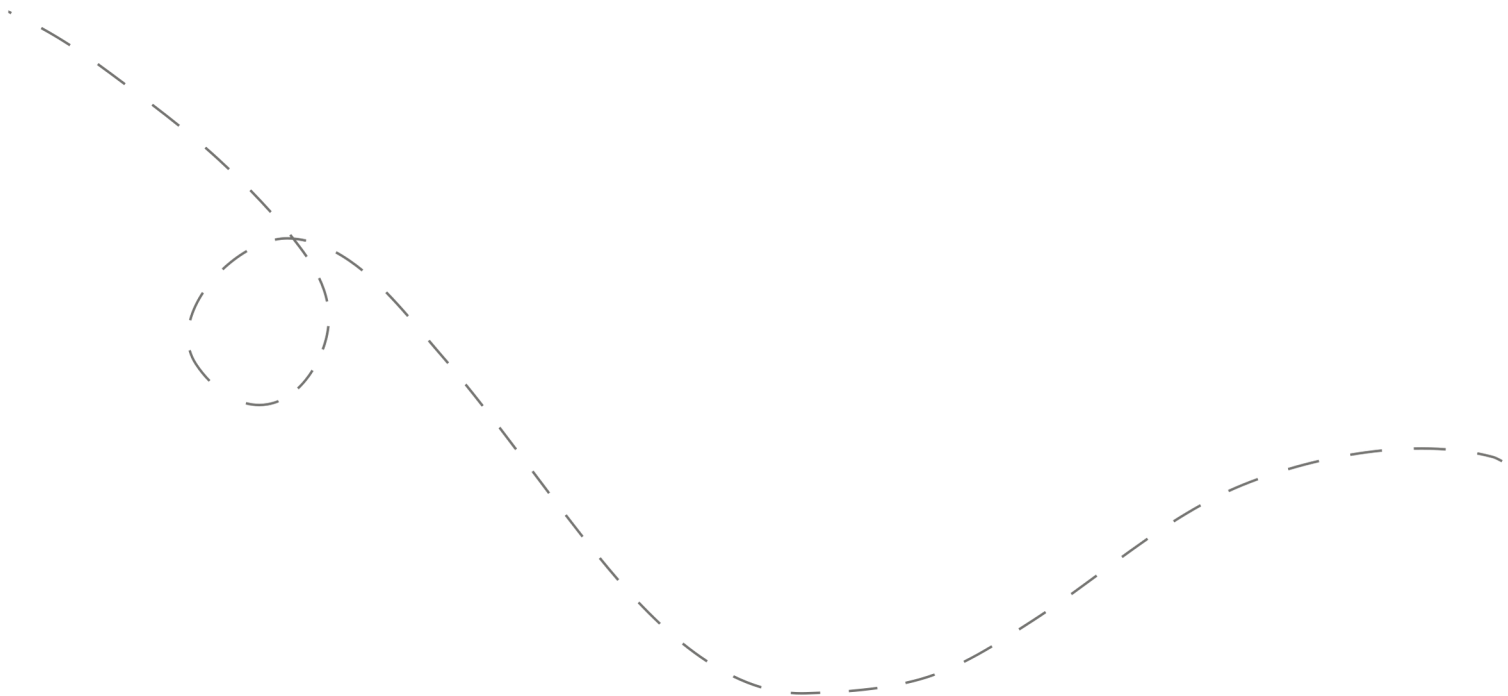


Hit the Road!

Don't open the first envelope until you're ready to leave. Once you're finished at the first stop, you can open the second envelope. Four stops are included within your road trip.

Your day ahead! Without giving away too many details.

We often include a variety of recommendations at each stop. You do not have to go to all of them, pick and choose what works best for you and your travel mates. If you can't get through all of the stops during the day - come back and explore them at a later date!



DETAILED ITINERARY



Time to Depart!

We recommend departing between **9:00 - 9:30 am**. The later you leave, the less time you'll have to explore all of the stops.

1

Café Coziness

Recommended duration: 30 minutes

Drive time to second stop: 25 minutes

**Light food options are available at this stop*

2

Outdoor Oasis

Recommended duration: 1 hour

Drive time to third stop: 10 minutes

3

A Brewery Break

Recommended duration: 1 hour

Drive time to fourth stop: 20 minutes

**Multiple food option are available at this stop*

4

Choose Your Own Adventure

Recommended duration: 1 - 2 hours

**Multiple food options are available at this stop*

Navigating the Road



When to Go

- ✓ This trip can be done in **any season throughout the year.**
- ✓ Best done **Wednesday-Saturday.** Some closures may occur on holidays. You can do this trip on a Sunday; however, a few options on stop 4 may be closed.



Pre-Booking 4th Stop

The fourth stop has the option of snowshoeing or skating. If you need to rent snowshoes, they must be booked in advance between 2:30-3:30 pm.



Itinerary Changes

Descriptions, dates and hours may have changed since publishing the itinerary. Find out if changes have been made to your trip by heading to:

guesswheretrips.com/updates

Tip: Scan below for the most updated trip!



Get the Digital Version

Every road trip package includes a QR code that you can scan to get the full digital version of the trip. This is a great option if you are traveling with a group of people in multiple cars!





What to Pack:

- ☐ A vehicle with a full tank of gas
- ☐ Comfortable walking footwear
- ☐ Warm clothes & layers (winter)
- ☐ Some form of GPS device (ie. Google Maps)
- ☐ Wallet (cash may be required)
- ☐ Your Guess Where Trip package
- ☐ Ice Skates are highly recommended (the alternative recommended activity is winter hiking or snowshoeing)
- ☐ Snowshoes or cross-country skis are recommended (these need to be rented in advance if you don't bring your own)
- ☐ Don't forget road trip music! Head to GWT's road trip playlist on Spotify here:



About the Trip Creator

Jessica Off has been planning road trip itineraries around the world for the last 14 years. She's always been obsessed with connecting the dots of the unexpected and is excited to continue doing so with Guess Where Trips.



Questions?

If you have any questions before you your trip, please send us an email to **questions@guesswheretrips.com**. We try to get back to all email inquiries within one business day.

Please note: we are out of the office over the weekend and on holidays.

Frequently Asked Questions



How much will the stops cost?

First Stop: No fee

Second Stop: ~\$8/person + the cost of snowshoe rentals if needed. One free option is available.

Third Stop: No fee

Fourth Stop: ~\$8/person + rental costs if snowshoes or cross-country skis need to be rented. Ice skating is available here. Other free options are available.

**Please note: gas, tolls, and food may be additional costs.*

When should we leave?

We recommend leaving anytime between **9:00 - 9:30 am if you're coming from the GTA**. The later you leave, the less time you may have to complete all of the stops.

Can I bring my dog?

We do not recommend bringing your dog as it will limit you from experiencing a handful of our suggestions. Restaurants and cafes are not pup-friendly.



How long will the total trip take?

See the approximate **round-trip driving distances/times** below. These are driving distances only and do not factor in time spent at stops.

From **Downtown Toronto:**

2 hours and 40 minutes / 170 km

From **Oakville/Burlington:**

2 hours and 20 minutes / 173 km

From **Barrie:**

2 hours and 30 minutes / 182 km

From **Hamilton:**

3 hours / 230 km

From **Collingwood:**

3 hours and 35 minutes / 236 km

From **London*:**

5 hours and 10 minutes / 388 km

**We recommend booking an overnight hotel if the driving distance is greater than 4 hours round-trip.*

How many people can I bring with me?

We recommended **bringing up to 5 people** on your surprise road trip.

If you're bringing a larger group, we highly recommend having one person in charge of booking reservations at restaurants and attractions in advance. Please see the previous page for a copy of the digital itinerary.

Is this wheelchair or stroller accessible?

First Stop: There are multiple accessible options on this stop.

Second Stop: Unfortunately there are no accessible options at this stop.

Third Stop: The stop is accessible.

Fourth Stop: There are multiple accessible options on this stop.



Have questions? Email us at questions@guesswheretrips.com.

Risk

Get out on the road and have fun, but please be careful. Obey all road signs, never drink and drive, and use caution and common sense at all times. The risk of injury can be significant, including the potential for permanent disability and death. While particular precautions and personal discipline will minimize this risk, the risk of personal and emotional injury, illness, physical disability, or death does exist. Guess Where Trips Inc., its owners, officers, publishers, and agents assume NO liability for your actions or activities as a result of recommendations within this guide. You agree and acknowledge that you will do some, or all, of the recommendations suggested in this book with full and complete knowledge of the risk and dangers involved, and you agree to accept and assume any and all risks of any nature whatsoever.

More information is available on our website at www.guesswheretrips.com.

The Guess Where Trips Team



Have fun, and be safe!

Have fun, and be safe!



Redefining Road Trips

Copyright © 2026 Guess Where Trips Inc.®

 Share Your Trip With Us @guesswheretrips | #guesswheretrips
