



CHASING WATERFALLS

Before You Go

A photograph of a dirt path winding through a dense forest. Large, textured tree trunks are visible on either side of the path, and the ground is covered in fallen leaves and small plants. The lighting is soft, suggesting a shaded forest environment.

“

Not to be dramatic
but I went on one
of your trips last
weekend and
it was the best day
of my life.

-GUESS WHERE TRIPPER

How does a surprise road trip work?



Pick a Date

We recommend doing the trip within **6 months** of receiving this road trip. Pay close attention to the 'When To Go' within the 'Navigating the Road' section of this booklet.



Get Ready

The only requirement is having a vehicle, GPS and a driver. The trip is completely **self-guided**, so nothing needs to be booked in advance.



Check Updates

Before leaving, please check **travel updates** on our website. This will provide you with any major changes to the itinerary.



Pack Your Bag

Please refer to the '**What to Pack**' list in this booklet for items we recommend bringing with you.

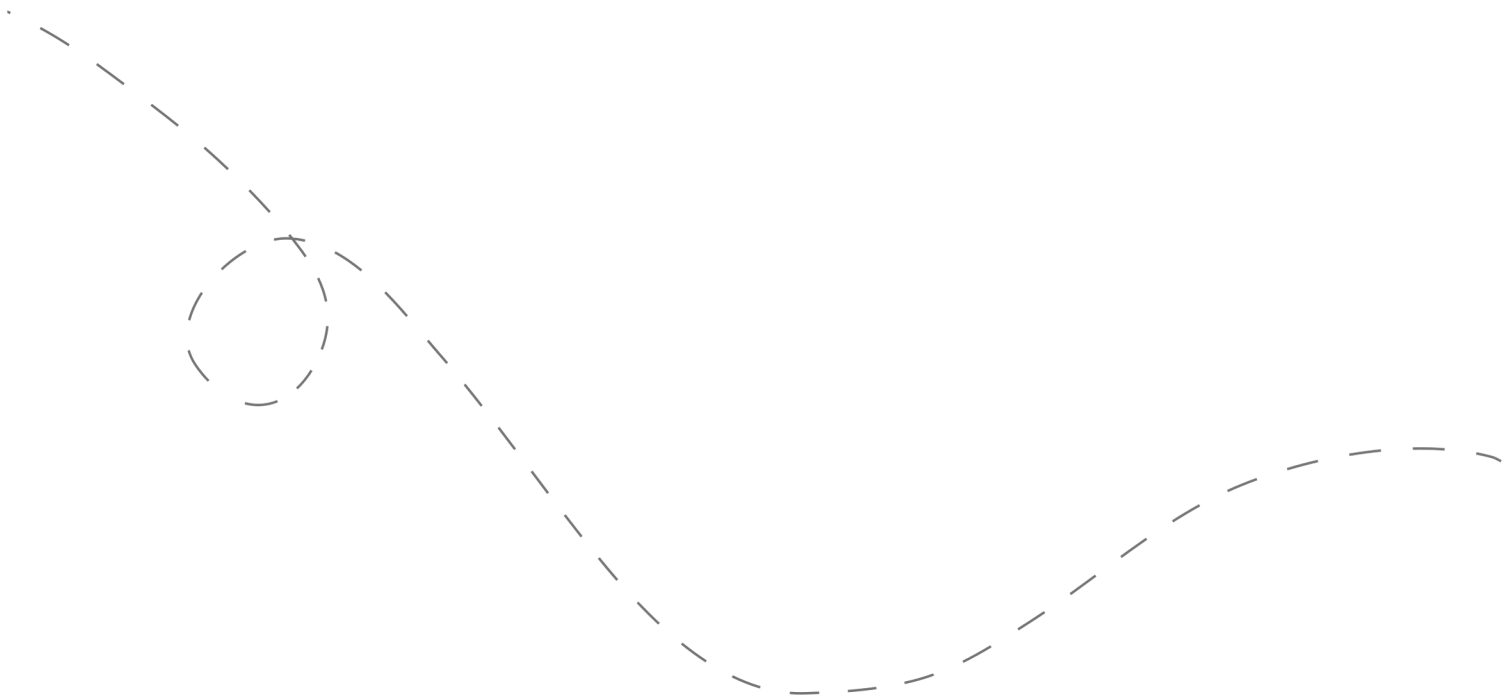


Hit the Road!

Don't open the first envelope until you're ready to leave. Once you're finished at the first stop, you can open the second envelope. Four stops are included within your road trip.

Your day ahead! Without giving away too many details.

We often include a variety of recommendations at each stop. You do not have to go to all of them, pick and choose what works best for you and your travel mates. If you can't get through all of the stops during the day - come back and explore them at a later date!



DETAILED ITINERARY



Time to Depart!

We recommend departing between 8 am - 9 am



A Walk on the Wild Side

Recommended duration: 45 minutes - 1 hour

Drive time to second stop: 30 minutes

**One food option on this stop*



The Most Scenic Spot of the Day

Recommended duration: 30 - 45 minutes

Drive time to third stop: 18 minutes



Historic Highway Drives

Recommended duration: 1 hour - 1.5 hours

Drive time to fourth stop: 30 minutes

**Multiple food options at this stop*



Choose Your Own Adventure

Recommended duration: 1 - 1.5 hours

**One food option on this stop*

Navigating the Road



When to Go

- ✓ This trip is best done **Wednesday - Sunday**, anytime during the year.
- ✓ You can travel on Monday or Tuesday; however, please bring extra road trip snacks as our food option on stop #1 will be closed. We do not recommend travelling on holidays.



Stay Overnight

Head to the following link for a list of recommended accommodations close to the last stop.

[guesswheretrips.com/pages/hotels](https://www.guesswheretrips.com/pages/hotels)

**The link above will only reveal the general area where your trip will end.*



Itinerary Changes

Descriptions, dates and hours may have changed since publishing the itinerary. Find out if changes have been made to your trip by heading to:

[guesswheretrips.com/updates](https://www.guesswheretrips.com/updates)

Tip: scan below for the most updated trip!



Get the Digital Version

Every road trip package includes a QR code that you can scan to get the full digital version of the trip. This is a great option if you are traveling with a group of people in multiple cars!





What to Pack:

- ☐ A vehicle with a full tank of gas
- ☐ Comfortable walking or hiking footwear
- ☐ Weather appropriate clothing/apparel
- ☐ Sunscreen & bug spray (summer)
- ☐ Some form of GPS device (ie. Google Maps)
- ☐ Cell phone charging cables
- ☐ Wallet (cash/coins might be required)
- ☐ **Road trip snacks!**
- ☐ Your Guess Where Trips package
- ☐ Don't forget road trip music! Head to GWT's road trip playlist on Spotify here:



Pack for Hiking

With so many little hikes on this trip, please remember to pack the 'Essential 10' before hiking: Flashlight or a headlamp with extra batteries, Signalling device, Fire starter, Warm clothes, Pocketknife, Shelter (large plastic bag or tarp), Water and food, First aid kit, Navigation, and Communications/cellphone.

www.adventuresmart.ca



Land Acknowledgement

We acknowledge that the land you will be travelling on is the traditional unsundered territory of the Kwantlen peoples and Hul'qumi'num Treaty Group.

Guess Where Trips believes land acknowledgments are an important way of recognizing and expressing gratitude to the First Nations, Inuit or Métis land that was stolen from them. Please respect this land.

Frequently Asked Questions

How much will the stops cost?

First Stop: No fee

Second Stop: Our main suggestion is free. An optional seasonal stop requires an entrance fee (\$).

Third Stop: Our main suggestion is free. An optional seasonal stop requires an entrance fee (\$).

Fourth Stop: No fee

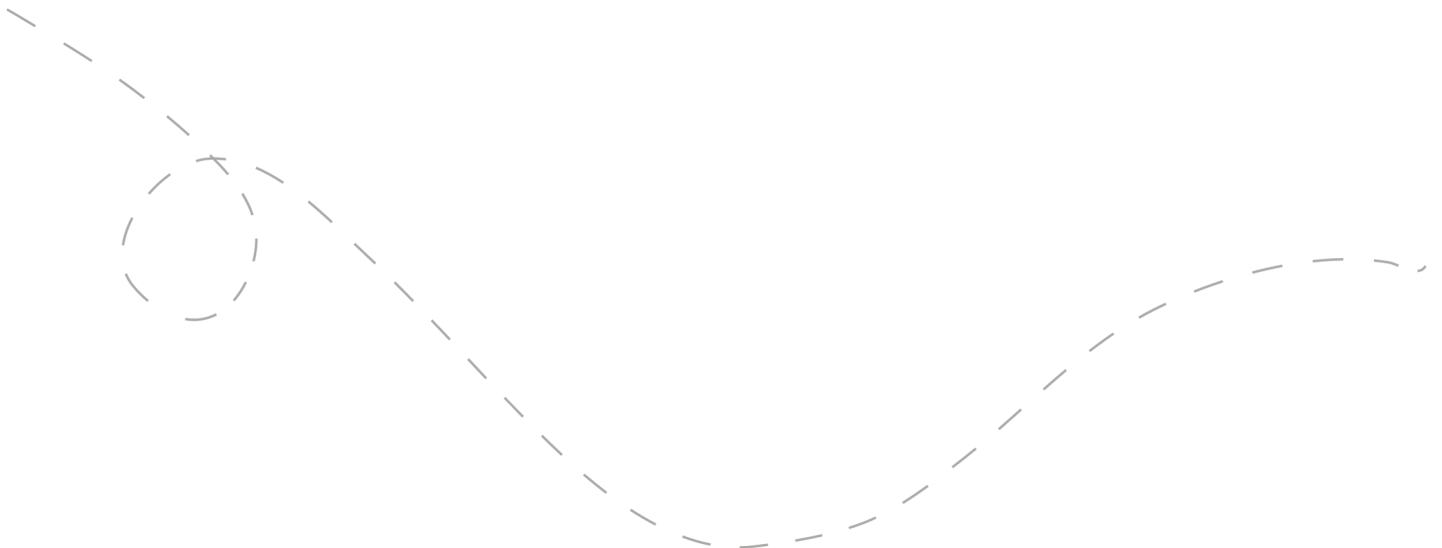
**Please note: gas, tolls, and food may be additional costs.*

When should we leave?

We recommend leaving anytime between **8 am - 9 am**. The later you leave the less time you may have to complete all the stops.

Can I bring my dog?

Your furry friend can come along on this trip, but you'll be somewhat restricted at some of the optional restaurants and shops. Please always keep your dog on a leash. When in doubt, we recommend confirming pet regulations with certain locations.



How long will the total trip take?

See the approximate round-trip driving distances/times below. These are driving distances only and do not factor in time spent at stops.

From **North Vancouver*:**

4 hours and 6 minutes / 280 km

From **Vancouver*:**

4 hours and 17 minutes / 277 km

From **Richmond*:**

4 hours and 23 minutes / 298 km

From **Burnaby:**

3 hours and 42 minutes / 252 km

From **Langley:**

3 hours and 28 minutes / 216 km

From **Abbotsford:**

2 hours and 49 minutes / 175 km

From **Mission:**

2 hours and 44 minutes / 172 km

**We recommend booking an overnight hotel if the driving distance is greater than 4 hours round-trip.*

How many people can I bring with me?

We recommended **bringing up to 5 people** on your surprise road trip.

If you're bringing a larger group, we highly recommend having one person in charge of booking reservations at restaurants and attractions in advance. Please see the previous page for a copy of the digital itinerary.

Is this wheelchair or stroller accessible?

Unfortunately this trip is not wheelchair or stroller accessible.

Risk

Get out on the road and have fun, but please be careful. Obey all road signs, never drink and drive, and use caution and common sense at all times. The risk of injury can be significant, including the potential for permanent disability and death. While particular precautions and personal discipline will minimize this risk, the risk of personal and emotional injury, illness, physical disability, or death does exist. Guess Where Trips Inc., its owners, officers, publishers, and agents assume NO liability for your actions or activities as a result of recommendations within this guide. You agree and acknowledge that you will do some, or all, of the recommendations suggested in this book with full and complete knowledge of the risk and dangers involved, and you agree to accept and assume any and all risks of any nature whatsoever.

More information is available on our website at www.guesswheretrips.com.

The Guess Where Trips Team



Have fun, and be safe!

Have fun, and be safe!



Redefining Road Trips

Copyright © 2026 Guess Where Trips Inc.®

 Share Your Trip With Us @guesswheretrips | #guesswheretrips
