



CHARMING CURIOSITIES

Before You Go



“

I have been
wanting to go to
this end destination
for YEARS. So
happy Guess
Where Trips finally
helped it happen.

-GUESS WHERE TRIPPER

How does a surprise road trip work?



Pick a Date

We recommend doing the trip within **6 months** of receiving this road trip. Pay close attention to the 'When To Go' within the 'Navigating the Road' section of this booklet.



Get Ready

The only requirement is having a vehicle, GPS and a driver. The trip is completely **self-guided**, so nothing needs to be booked in advance.



Check Updates

Before leaving, please check **travel updates** on our website. This will provide you with any major changes to the itinerary.



Pack Your Bag

Please refer to the '**What to Pack**' list in this booklet for items we recommend bringing with you.

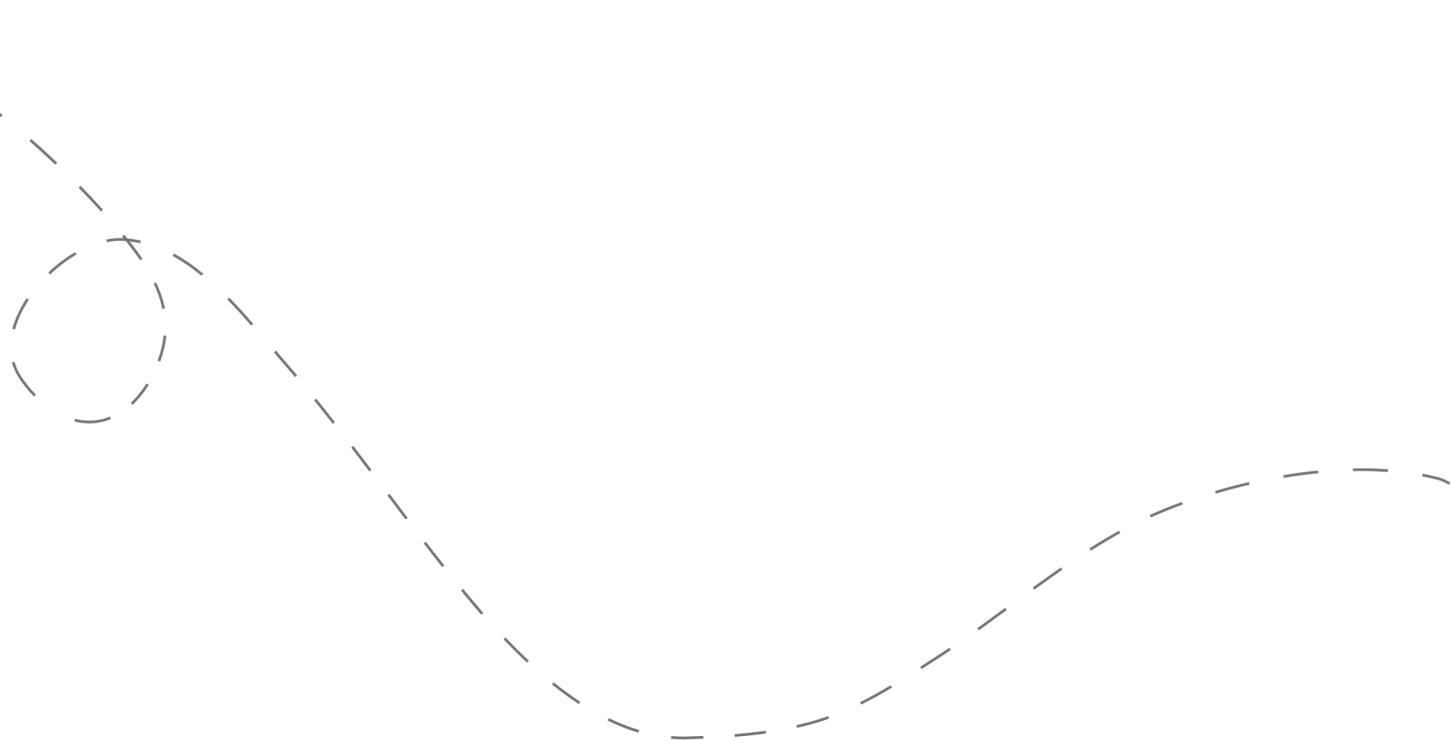


Hit the Road!

Don't open the first envelope until you're ready to leave. Once you're finished at the first stop, you can open the second envelope. Four stops are included within your road trip.

Your day ahead! Without giving away too many details.

We often include a variety of recommendations at each stop. You do not have to go to all of them, pick and choose what works best for you and your travel mates. If you can't get through all of the stops during the day - come back and explore them at a later date!



DETAILED ITINERARY



Time to Depart!

We recommend departing between **10:00 am and 10:30 am from the Washington area** and between **9:30 am and 10:00 from the Baltimore area.**



Quaint Mornings

Recommended duration: 45 minutes - 1 hour
Drive time to second stop: 12 minutes

**One light food option is available*



Pick Your Park

Recommended duration: 1 hour
Drive time to third stop: 20 - 25 minutes



Sips, Sights or Spirits?

Recommended duration: 1 hour
Drive time to fourth stop: 20 minutes



Choose Your Own Adventure

Recommended duration: 1 - 2 hours

**Multiple food options available at this stop*

Navigating the Road



When to Go

- ✓ This trip is best done between **Wednesday - Sunday throughout the year.**
- ✓ You can travel on a Monday or Tuesday; however, one suggestion on both your first and third stops will be closed.



Stay Overnight

Head to the following link for a list of recommended accommodations close to the last stop.

guesswheretrips.com/pages/hotels

**The link above will only reveal the general area of where your trip will end.*



Itinerary Changes

Descriptions, dates and hours may have changed since publishing the itinerary. Find out if changes have been made to your trip by heading to:

guesswheretrips.com/updates

Tip: Scan below for the most updated trip!



Get the Digital Version

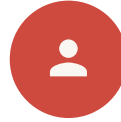
Every road trip package includes a QR code that you can scan to get the full digital version of the trip. This is a great option if you are traveling with a group of people in multiple cars!





What to Pack:

- ☐ A vehicle with a full tank of gas
- ☐ Comfortable walking footwear
- ☐ Reusable shopping bags
- ☐ Hat, sunscreen & bug spray
- ☐ Cooler with ice packs
- ☐ Some form of GPS device (ie. Google Maps)
- ☐ Coins - metered parking may be required on your last stop
- ☐ Road trip snacks
- ☐ Your Guess Where Trips package
- ☐ Don't forget road trip music! Head to GWT's road trip playlist on Spotify here:



About the Trip Creators

Aleah and Seth Myers are DC-based travel bloggers and content creators. They've spent the last ten years road tripping on the weekends and created their brand, **@HappilyEverExploring**, to highlight underrated destinations and outdoorsy experiences on the East Coast and beyond. If they had to sum up what they're all about in a phrase, it would be "city-living, nature-loving experience seekers."



Land Acknowledgement

We recognize that some of the stops listed in this trip date back to a time when not everyone was free.

As we acknowledge slavery and its impact on our history, we recognize the profound inequalities and systemic racism it has bred. This horrific institution dehumanized millions, leaving lasting social and economic consequences. Confronting these truths allows us to reflect, foster dialogue, and work towards a more just society. As you travel, we encourage you to inquire about this history, and ask sites to prominently display their history and its ongoing impact, ensuring it is neither overlooked nor diminished.

Frequently Asked Questions

How much will the stops cost?

First Stop: No fee

Second Stop: No fee

Third Stop: Our featured stop is free to explore. An optional museum has a small entrance fee (\$) per person.

Fourth Stop: Some parking fees may apply.

**Please note: gas, tolls, and food may be additional costs.*

When should we leave?

We recommend leaving from the DC area anytime between **10:00 and 10:30 am**. If you are leaving from the Baltimore area, we recommend leaving between **9:30 and 10:00 am**.

Can I bring my dog?

This trip is **somewhat pet-friendly**! At every stop there will be at least one option for you to explore with your furry friend. However, please note that most cafe and shop suggestions will only allow pets on outdoor patios. Please coordinate with the weather.



How long will the total trip take?

See the approximate **round-trip driving distances/times** below. These are driving distances only and do not factor in time spent at stops.

From **Washington, D.C.:**

2 hours and 34 minutes / 113 miles

From **Baltimore, MD:**

3 hours and 55 minutes / 193 miles

From **Richmond, VA:**

3 hours and 16 minutes / 185 miles

From **Alexandria, VA:**

2 hours and 15 minutes / 104 miles

From **Winchester, VA:**

3 hours and 47 minutes / 185 miles

**We recommend booking an overnight hotel if the driving distance is greater than 4 hours round-trip.*

How many people can I bring with me?

We recommended **bringing up to 5 people** on your surprise road trip.

If you're bringing a larger group, we highly recommend having one person in charge of booking reservations at restaurants and attractions in advance. Please see the previous page for a copy of the digital itinerary.

Is this wheelchair or stroller accessible?

First Stop: There are multiple accessible options on this stop.

Second Stop: This stop is somewhat accessible.

Third Stop: This stop is somewhat accessible. Our winery suggestion is fully accessible.

Fourth Stop: There are multiple accessible options on this stop.



Have questions? Email us at questions@guesswheretrips.com.

Risk

Get out on the road and have fun, but please be careful. Obey all road signs, never drink and drive, and use caution and common sense at all times. The risk of injury can be significant, including the potential for permanent disability and death. While particular precautions and personal discipline will minimize this risk, the risk of personal and emotional injury, illness, physical disability, or death does exist. Guess Where Trips Inc., its owners, officers, publishers, and agents assume NO liability for your actions or activities as a result of recommendations within this guide. You agree and acknowledge that you will do some, or all, of the recommendations suggested in this book with full and complete knowledge of the risk and dangers involved, and you agree to accept and assume any and all risks of any nature whatsoever.

More information is available on our website at www.guesswheretrips.com.

The Guess Where Trips Team



Have fun, and be safe!



Redefining Road Trips

Copyright © 2026 Guess Where Trips Inc.®

 Share Your Trip With Us @guesswheretrips | #guesswheretrips
