



ALL THE PRETTY THINGS

Before You Go

A photograph of a small, blue wooden building with a white door and two windows, situated on a wooden pier extending into a body of water. The building is reflected in the calm water. The sky is overcast and grey. The text is overlaid on the image.

“

Not to be dramatic
but I went on one
of your trips last
weekend and
it was the best day
of my life.

-GUESS WHERE TRIPPER

How does a surprise road trip work?



Pick a Date

We recommend doing the trip within **6 months** of receiving this road trip. Pay close attention to the 'When To Go' within the 'Navigating the Road' section of this booklet.



Get Ready

The only requirement is having a vehicle, GPS and a driver. The trip is completely **self-guided**, so nothing needs to be booked in advance.



Check Updates

Before leaving, please check **travel updates** on our website. This will provide you with any major changes to the itinerary.



Pack Your Bag

Please refer to the '**What to Pack**' list in this booklet for items we recommend bringing with you.

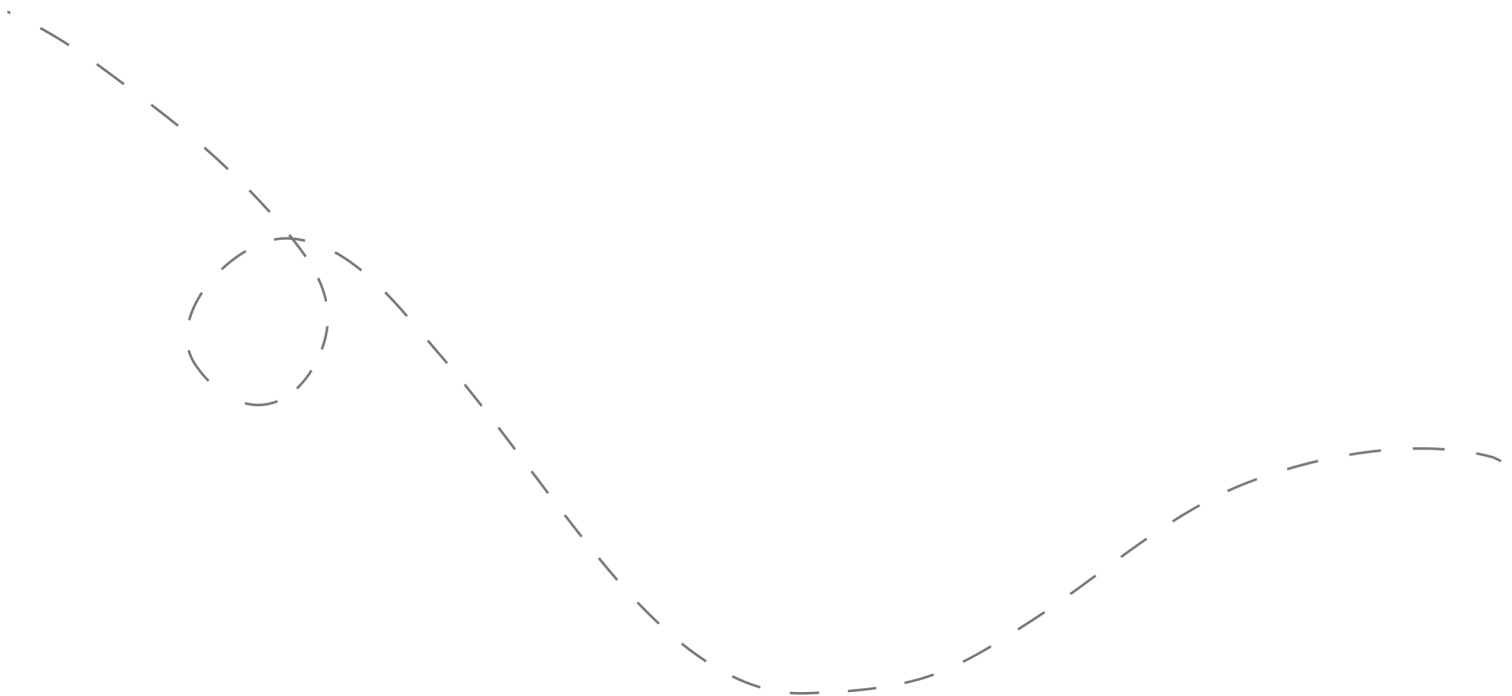


Hit the Road!

Don't open the first envelope until you're ready to leave. Once you're finished at the first stop, you can open the second envelope. Four stops are included within your road trip.

Your day ahead! Without giving away too many details.

We often include a variety of recommendations at each stop. You do not have to go to all of them, pick and choose what works best for you and your travel mates. If you can't get through all of the stops during the day - come back and explore them at a later date!



DETAILED ITINERARY



Time to Depart!

We recommend departing between **8 am - 9 am**. The later you leave, the less time you have to explore all of the stops.



Hidden Treasures

Recommended duration: 1 - 1.5 hours
Drive time to second stop: 21 minutes

**Multiple food options are recommended at this stop.*



An Epic Lookout

Recommended duration: 15 - 30 minutes
Drive time to third stop: 4 minutes



Quaint Lunch Spots

Recommended duration: 1 - 1.5 hours
Drive time to fourth stop: 26 minutes

**Multiple food options are recommended at this stop*



The Prettiest Locks

Recommended duration: 30 minutes - 1 hour

Navigating the Road



When to Go

- ✓ This trip is **best done spring to fall**. Can be done in the winter; however, stop #4 is closed.
- ✓ Best done **Wednesday-Sunday**. One winery option on stop #3 has sometimes closes between Nov. - May and is closed Wednesdays all year.



Stay Overnight

Head to the following link for a list of recommended accommodations close to the last stop.

guesswheretrips.com/pages/hotels

**The link above will only reveal the general area where your trip will end.*



Itinerary Changes

Descriptions, dates and hours may have changed since publishing the itinerary. Find out if changes have been made to your trip by heading to:

guesswheretrips.com/updates

Tip: scan below for the most updated trip!



Get the Digital Version

Every road trip package includes a QR code that you can scan to get the full digital version of the trip. This is a great option if you are traveling with a group of people in multiple cars!





What to Pack:

- ☐ A vehicle with a full tank of gas
- ☐ Comfortable walking footwear
- ☐ Warm clothes & layers (winter)
- ☐ Some form of GPS device (ie. Google Maps)
- ☐ Cell phone charging cables
- ☐ Bug Spray for optional nature walks
- ☐ Wallet (cash may be required)
- ☐ Your Guess Where Trips package
- ☐ Ice Skates are highly recommended (the alternative recommended activity is winter hiking or snowshoeing)
- ☐ Snowshoes (Optional winter hikes)
- ☐ Don't forget road trip music! Head to GWT's road trip playlist on Spotify here:



About the Trip Creator

Nina Danielle of Nina Near and Far (@ninanearandfar) is an Ottawa-based blogger who loves discovering new places in Ontario and Quebec. She loves spending time outside, going on weekend adventures, and sharing the cool places she finds on her blog.



Land Acknowledgement

We acknowledge that the land you will be travelling on is the traditional unsundered territory of the Omàmiwininimowin people.

Guess Where Trips believes land acknowledgments are an important way of recognizing and expressing gratitude to the First Nations, Inuit and Métis whose that was stolen from them. Please respect this land.

Frequently Asked Questions

How much will the stops cost?

First Stop: Featured stop has no fee. Optional stop requires a parking fee (\$).

Second Stop: Parking fee required (\$).

Third Stop: No fee

Fourth Stop: No Fee

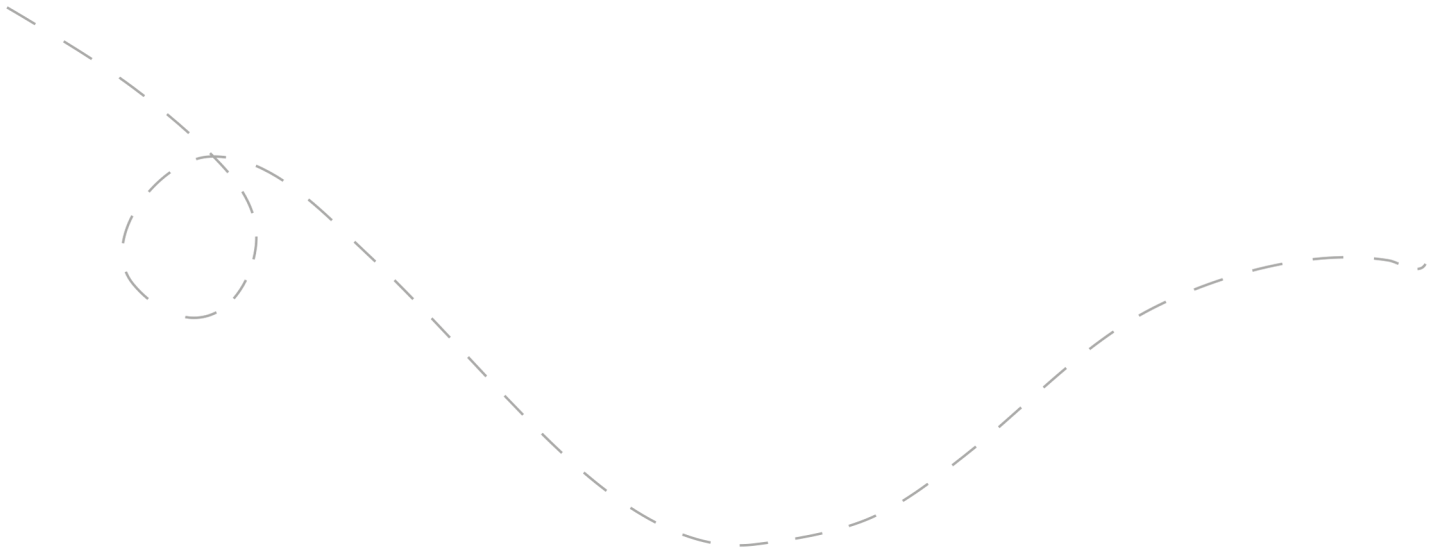
**Please note: gas, tolls, and food may be additional costs.*

When should we leave?

We recommend leaving anytime between **8 am - 9 am**. The later you leave, the less time you may have to complete all of the stops.

Can I bring my dog?

Unfortunately, this trip is **not dog friendly**. We recommend leaving your furry friends at home for the day!



How long will the total trip take?

See the approximate **round-trip driving distances/times** below. These are driving distances only and do not factor in time spent at stops.

From **Ottawa:**

3 hours and 26 minutes / 267 km

From **Kingston**

2 hours and 46 minutes / 195 km

From **Belleville***:

4 hours and 5 minutes / 333 km

**We recommend booking an overnight hotel if the driving distance is greater than 4 hours round-trip.*

How many people can I bring with me?

We recommended **bringing up to 5 people** on your surprise road trip.

If you're bringing a larger group, we highly recommend having one person in charge of booking reservations at restaurants and attractions in advance. Please see the previous page for a copy of the digital itinerary.

Is this wheelchair or stroller accessible?

First Stop: There are multiple accessible options on this stop.

Second Stop: The featured stop is mostly accessible. The alternative stop is not accessible.

Third Stop: This stop is accessible.

Fourth Stop: The featured stop is accessible. The alternative stop is not accessible.

Risk

Get out on the road and have fun, but please be careful. Obey all road signs, never drink and drive, and use caution and common sense at all times. The risk of injury can be significant, including the potential for permanent disability and death. While particular precautions and personal discipline will minimize this risk, the risk of personal and emotional injury, illness, physical disability, or death does exist. Guess Where Trips Inc., its owners, officers, publishers, and agents assume NO liability for your actions or activities as a result of recommendations within this guide. You agree and acknowledge that you will do some, or all, of the recommendations suggested in this book with full and complete knowledge of the risk and dangers involved, and you agree to accept and assume any and all risks of any nature whatsoever.

More information is available on our website at www.guesswheretrips.com.

The Guess Where Trips Team



Have fun, and be safe!

Have fun, and be safe!



Redefining Road Trips

Copyright © 2026 Guess Where Trips Inc.®

 Share Your Trip With Us @guesswheretrips | #guesswheretrips
